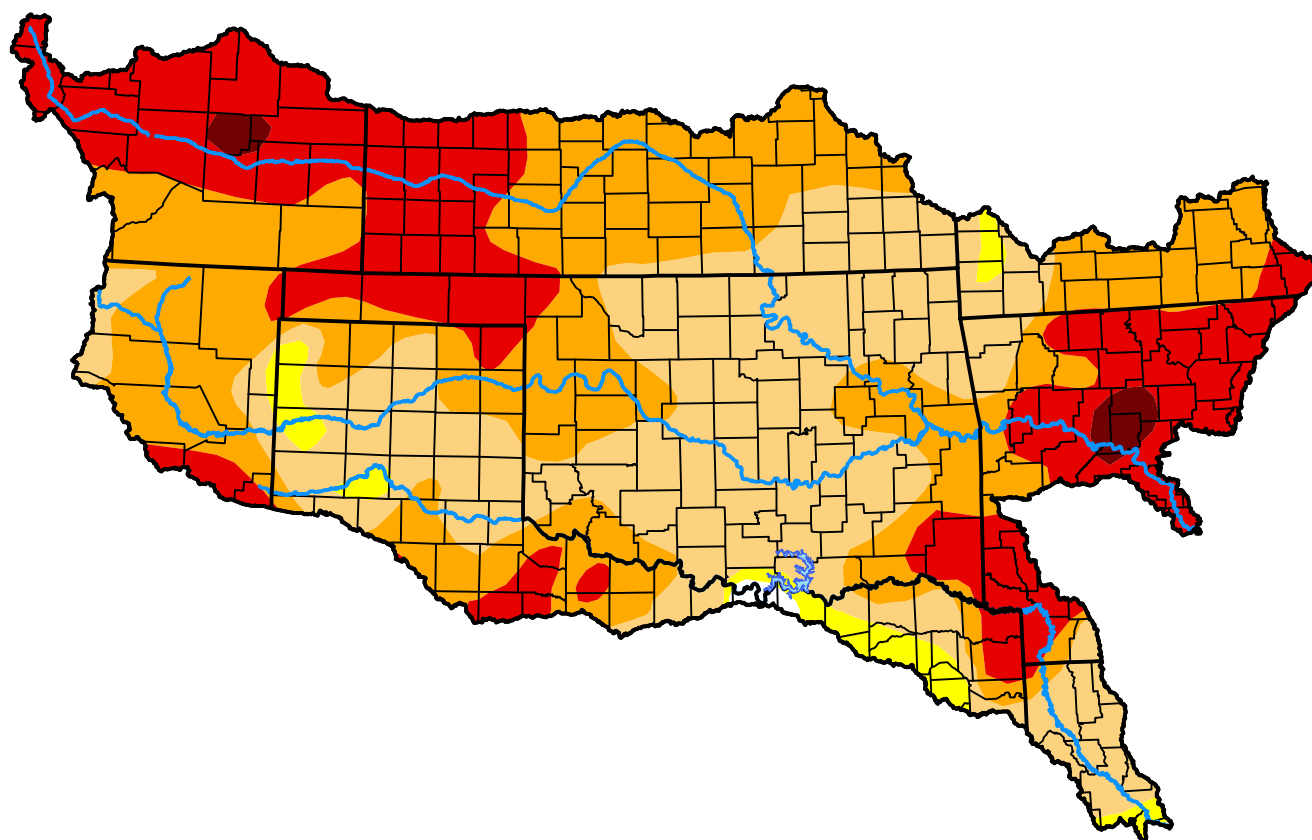


Arkansas-White-Red Watershed

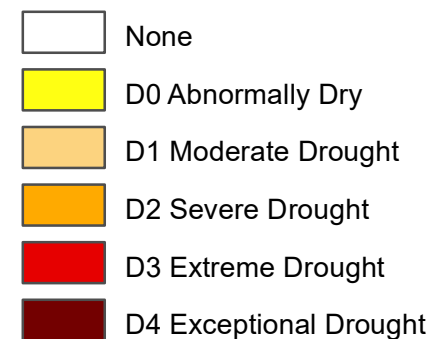
July 10, 2012

(Released Thursday, Jul. 12, 2012)

Valid 8 a.m. EDT



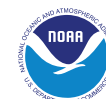
Intensity:



The Drought Monitor focuses on broad-scale conditions. Local conditions may vary. For more information on the Drought Monitor, go to <https://droughtmonitor.unl.edu/About.aspx>

Author:

Richard Tinker
CPC/NOAA/NWS/NCEP



droughtmonitor.unl.edu