

# U.S. Drought Monitor

## Arkansas-White-Red Watershed

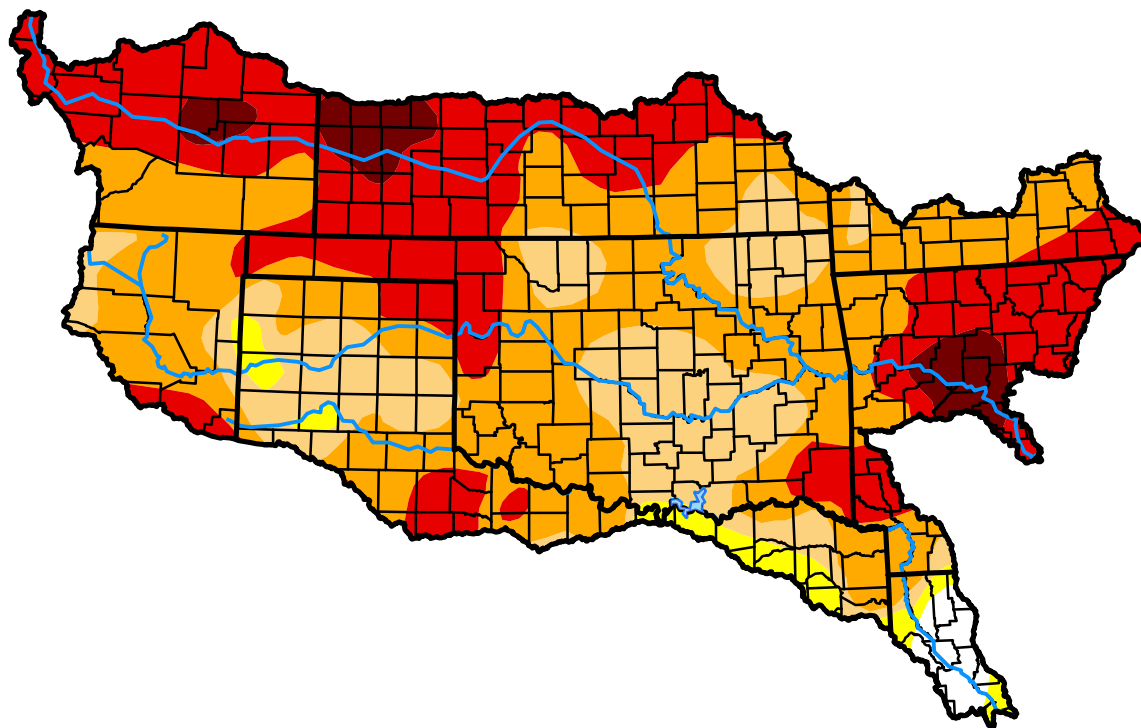
July 17, 2012

(Released Thursday, Jul. 19, 2012)

Valid 8 a.m. EDT

### Drought Conditions (Percent Area)

	None	D0-D4	D1-D4	D2-D4	D3-D4	D4
<b>Current</b>	1.62	98.38	95.41	76.40	34.47	4.25
<b>Last Week</b> <i>07-10-2012</i>	0.27	99.73	96.83	63.33	26.37	1.10
<b>3 Months Ago</b> <i>04-17-2012</i>	52.48	47.52	36.10	17.39	4.33	0.79
<b>Start of Calendar Year</b> <i>01-03-2012</i>	19.65	80.35	71.75	45.10	16.45	2.76
<b>Start of Water Year</b> <i>09-27-2011</i>	3.16	96.84	93.40	84.28	59.38	41.75
<b>One Year Ago</b> <i>07-19-2011</i>	3.17	96.83	84.06	67.82	52.30	28.96



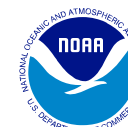
### Intensity:

- D0 Abnormally Dry
- D1 Moderate Drought
- D2 Severe Drought
- D3 Extreme Drought
- D4 Exceptional Drought

The Drought Monitor focuses on broad-scale conditions. Local conditions may vary. See accompanying text summary for forecast statements.

### Author:

Richard Heim  
NCEI/NOAA



<http://droughtmonitor.unl.edu/>