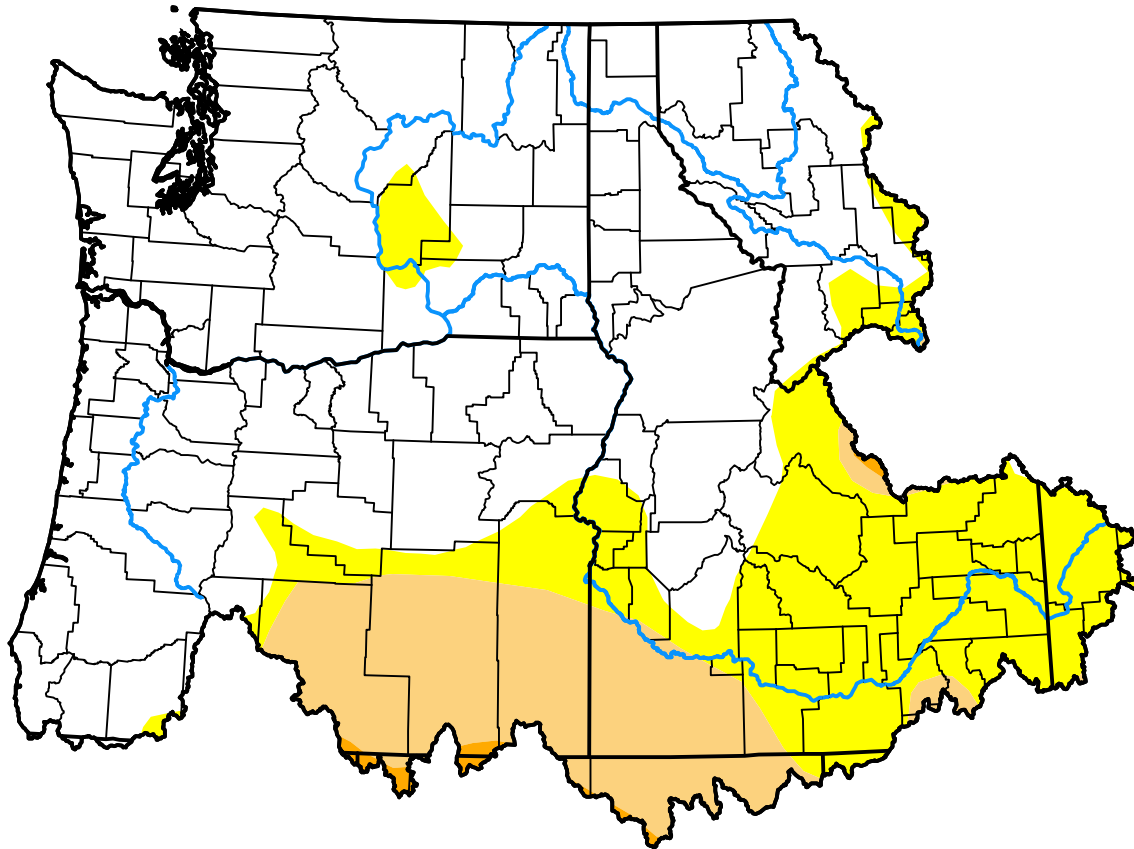


# U.S. Drought Monitor

## Pacific Northwest Watershed

**July 24, 2012**  
 (Released Thursday, Jul. 26, 2012)  
 Valid 8 a.m. EDT



*Drought Conditions (Percent Area)*

	None	D0	D1	D2	D3	D4
<b>Current</b>	65.53	20.97	13.04	0.46	0.00	0.00
<b>Last Week</b> <i>07-19-2012</i>	62.90	23.60	13.04	0.46	0.00	0.00
<b>3 Months Ago</b> <i>04-26-2012</i>	77.62	13.24	8.72	0.42	0.00	0.00
<b>Start of Calendar Year</b> <i>01-05-2012</i>	53.75	39.19	7.06	0.00	0.00	0.00
<b>Start of Water Year</b> <i>09-29-2011</i>	89.09	10.91	0.00	0.00	0.00	0.00
<b>One Year Ago</b> <i>07-28-2011</i>	100.00	0.00	0.00	0.00	0.00	0.00

***Intensity:***

- None
- D0 Abnormally Dry
- D1 Moderate Drought
- D2 Severe Drought
- D3 Extreme Drought
- D4 Exceptional Drought

*The Drought Monitor focuses on broad-scale conditions. Local conditions may vary. For more information on the Drought Monitor, go to <https://droughtmonitor.unl.edu/About.aspx>*

***Author:***

Richard Heim  
 NCEI/NOAA

