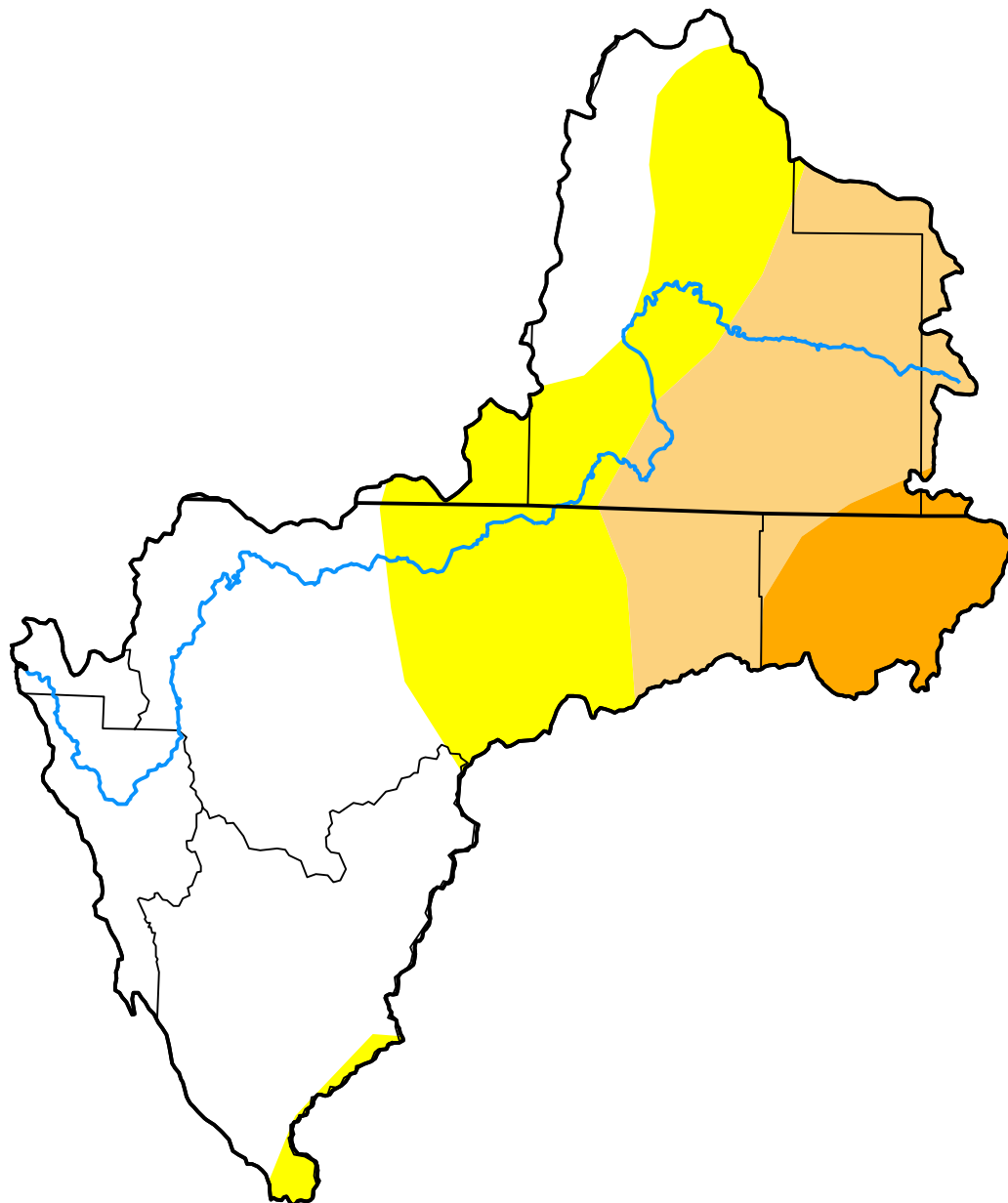


# U.S. Drought Monitor

## Klamath River Basin

**July 31, 2012**  
 (Released Thursday, Aug. 2, 2012)  
 Valid 8 a.m. EDT



*Drought Conditions (Percent Area)*

	None	D0	D1	D2	D3	D4
<b>Current</b>	46.34	24.47	21.65	7.54	0.00	0.00
<b>Last Week</b> <i>07-24-2012</i>	46.34	24.47	21.65	7.54	0.00	0.00
<b>3 Months Ago</b> <i>05-01-2012</i>	44.02	27.61	20.91	7.45	0.00	0.00
<b>Start of Calendar Year</b> <i>01-03-2012</i>	0.00	50.63	49.37	0.00	0.00	0.00
<b>Start of Water Year</b> <i>09-27-2011</i>	100.00	0.00	0.00	0.00	0.00	0.00
<b>One Year Ago</b> <i>08-02-2011</i>	100.00	0.00	0.00	0.00	0.00	0.00

***Intensity:***



*The Drought Monitor focuses on broad-scale conditions. Local conditions may vary. For more information on the Drought Monitor, go to <https://droughtmonitor.unl.edu/About.aspx>*

***Author:***

Mark Svoboda  
 National Drought Mitigation Center

