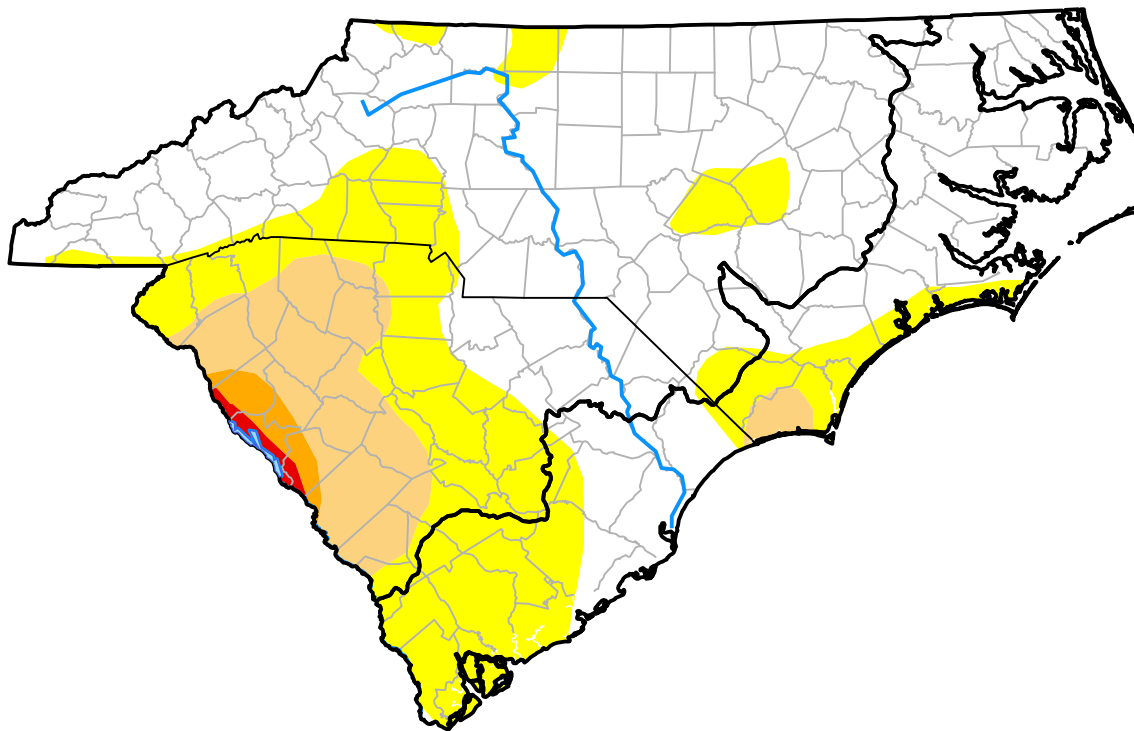


Carolinas RDEWS and Surrounding Areas

(Released Thursday, Aug. 16, 2012)
 10:00 a.m. EDT

Drought Conditions (Percent Area)

	None	D0	D1	D2	D3	D4
Current	62.13	26.27	9.91	1.19	0.50	0.00
Last Week <i>08-09-2012</i>	57.03	18.28	16.41	6.94	1.32	0.02
3 Months Ago <i>05-17-2012</i>	18.30	35.83	21.70	10.94	12.28	0.94
Start of Calendar Year <i>01-05-2012</i>	33.03	17.51	33.42	7.06	8.98	0.00
Start of Water Year <i>09-29-2011</i>	35.11	27.52	16.96	8.89	11.52	0.00
One Year Ago <i>08-18-2011</i>	19.60	30.87	25.99	20.28	3.26	0.00



Intensity:

- None
- D0 Abnormally Dry
- D1 Moderate Drought
- D2 Severe Drought
- D3 Extreme Drought
- D4 Exceptional Drought

The Drought Monitor focuses on broad-scale conditions. Local conditions may vary. For more information on the Drought Monitor, go to <https://droughtmonitor.unl.edu/About.aspx>

Author:

Michael Brewer
 NCEI/NOAA

