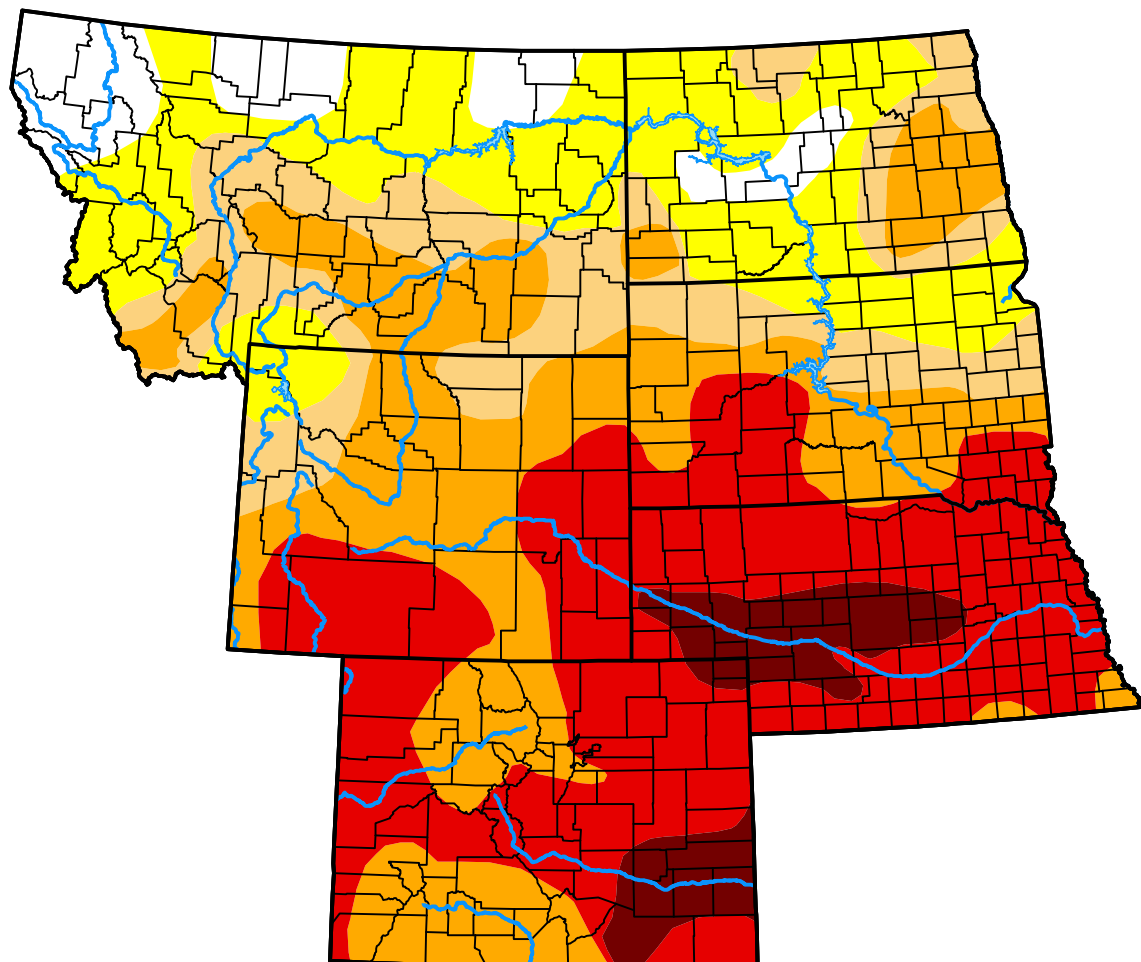


U.S. Drought Monitor

USDA Northern Plains Climate Hub

August 28, 2012
 (Released Thursday, Aug. 30, 2012)
 Valid 8 a.m. EDT



Drought Conditions (Percent Area)

	None	D0-D4	D1-D4	D2-D4	D3-D4	D4
Current	6.15	93.85	74.35	60.15	35.16	5.37
Last Week <i>08-21-2012</i>	9.17	90.83	73.81	58.19	32.06	4.78
3 Months Ago <i>05-29-2012</i>	48.57	51.43	23.41	6.36	1.79	0.00
Start of Calendar Year <i>01-03-2012</i>	68.95	31.05	9.32	2.29	0.01	0.00
Start of Water Year <i>09-27-2011</i>	73.09	26.91	6.01	3.63	1.43	0.10
One Year Ago <i>08-30-2011</i>	87.76	12.24	5.33	4.20	1.58	0.27

Intensity:

None	D2 Severe Drought
D0 Abnormally Dry	D3 Extreme Drought
D1 Moderate Drought	D4 Exceptional Drought

The Drought Monitor focuses on broad-scale conditions. Local conditions may vary. For more information on the Drought Monitor, go to <https://droughtmonitor.unl.edu/About.aspx>

Author:

Brian Fuchs
 National Drought Mitigation Center



droughtmonitor.unl.edu