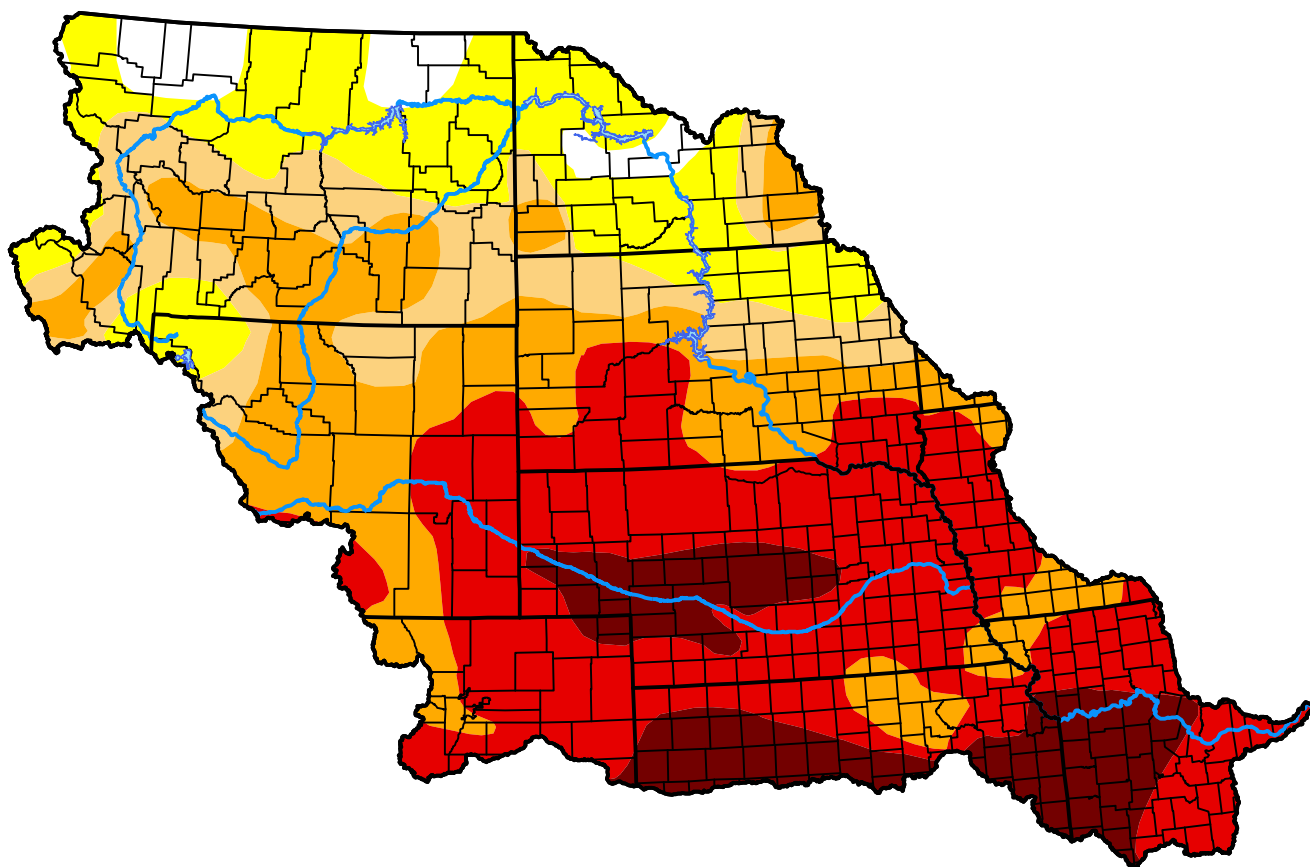
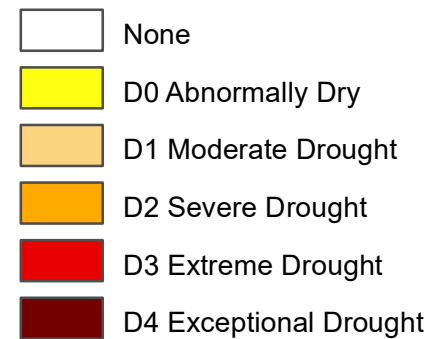


# U.S. Drought Monitor Missouri Watershed

**August 28, 2012**  
(Released Thursday, Aug. 30, 2012)  
Valid 8 a.m. EDT



## Intensity:



*The Drought Monitor focuses on broad-scale conditions. Local conditions may vary. For more information on the Drought Monitor, go to <https://droughtmonitor.unl.edu/About.aspx>*

## Author:

Brian Fuchs  
National Drought Mitigation Center



**droughtmonitor.unl.edu**