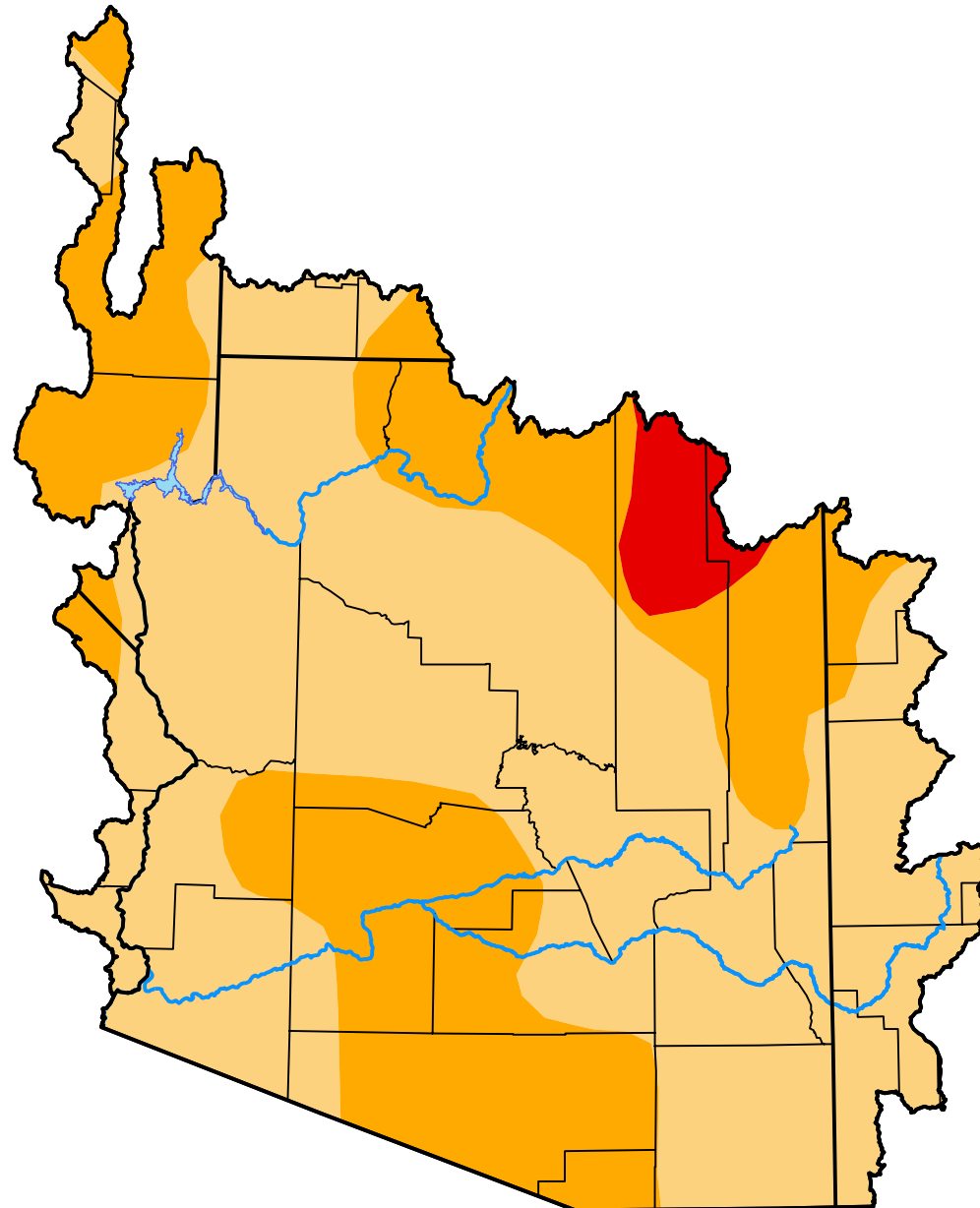


U.S. Drought Monitor

Lower Colorado Watershed

August 28, 2012
 (Released Thursday, Aug. 30, 2012)
 Valid 8 a.m. EDT



Drought Conditions (Percent Area)

	None	D0	D1	D2	D3	D4
Current	0.00	0.00	62.34	34.91	2.75	0.00
Last Week <i>08-23-2012</i>	0.00	0.00	29.47	63.28	7.25	0.00
3 Months Ago <i>05-31-2012</i>	0.00	3.51	14.26	70.84	11.40	0.00
Start of Calendar Year <i>01-05-2012</i>	25.39	21.58	24.39	26.38	2.26	0.00
Start of Water Year <i>09-29-2011</i>	9.35	28.39	22.46	21.65	12.50	5.66
One Year Ago <i>09-01-2011</i>	11.89	26.25	25.33	16.46	17.00	3.06

Intensity:

- None
- D0 Abnormally Dry
- D1 Moderate Drought
- D2 Severe Drought
- D3 Extreme Drought
- D4 Exceptional Drought

The Drought Monitor focuses on broad-scale conditions. Local conditions may vary. For more information on the Drought Monitor, go to <https://droughtmonitor.unl.edu/About.aspx>

Author:

Brian Fuchs
 National Drought Mitigation Center

