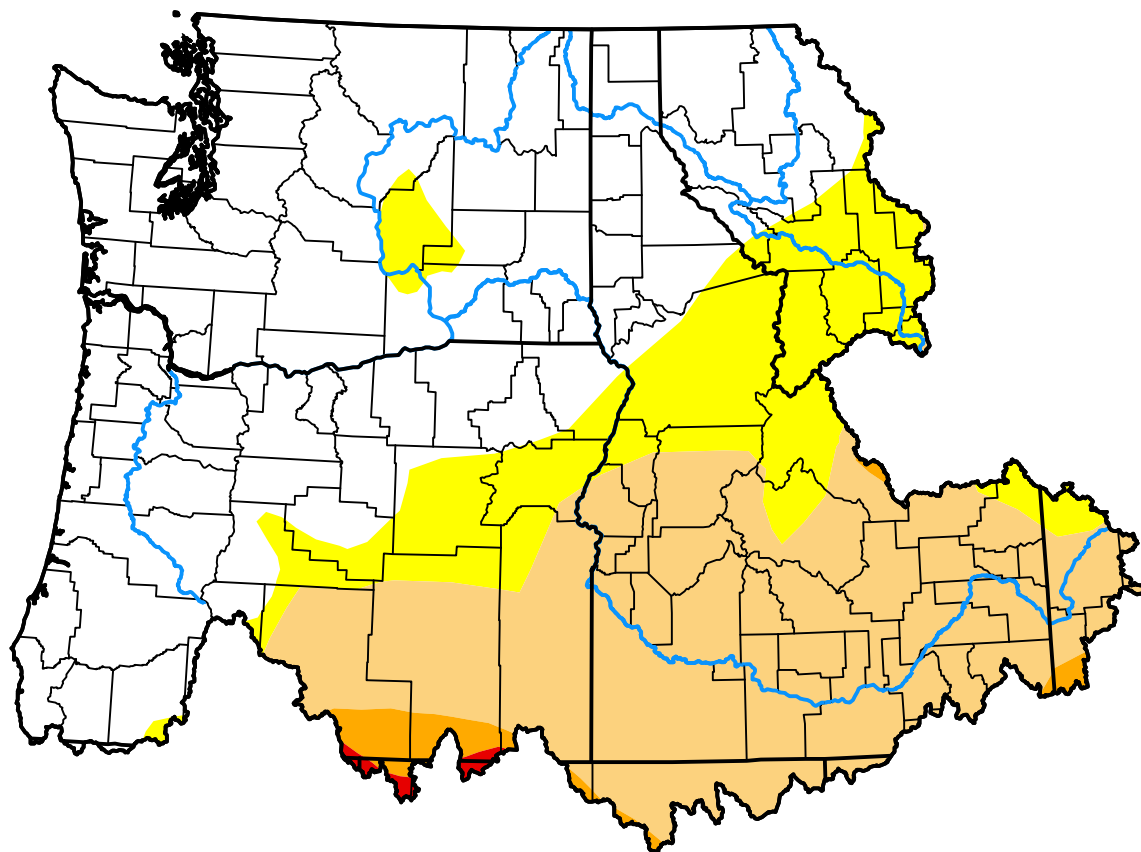


U.S. Drought Monitor

Pacific Northwest Watershed

August 28, 2012
 (Released Thursday, Aug. 30, 2012)
 Valid 8 a.m. EDT



Drought Conditions (Percent Area)

	None	D0	D1	D2	D3	D4
Current	52.72	16.05	29.46	1.50	0.27	0.00
Last Week 08-23-2012	52.48	16.22	30.82	0.48	0.00	0.00
3 Months Ago 05-31-2012	80.16	13.23	6.19	0.42	0.00	0.00
Start of Calendar Year 01-05-2012	53.75	39.19	7.06	0.00	0.00	0.00
Start of Water Year 09-29-2011	89.09	10.91	0.00	0.00	0.00	0.00
One Year Ago 09-01-2011	100.00	0.00	0.00	0.00	0.00	0.00

Intensity:

None	D2 Severe Drought
D0 Abnormally Dry	D3 Extreme Drought
D1 Moderate Drought	D4 Exceptional Drought

The Drought Monitor focuses on broad-scale conditions. Local conditions may vary. For more information on the Drought Monitor, go to <https://droughtmonitor.unl.edu/About.aspx>

Author:

Brian Fuchs
 National Drought Mitigation Center



droughtmonitor.unl.edu