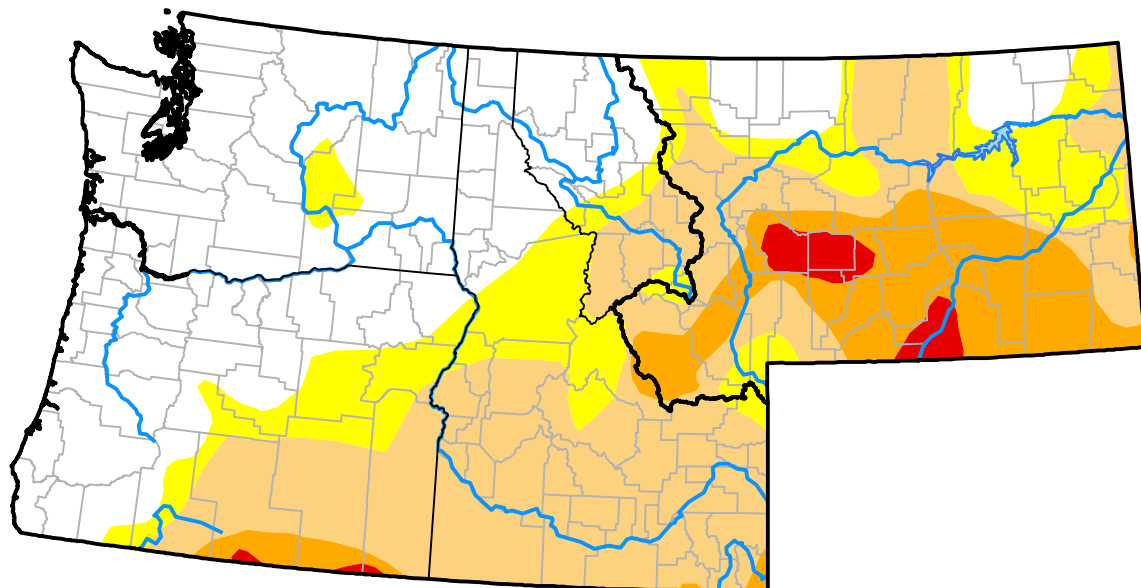


Northwest RDEWS and Surrounding Areas

Drought Conditions (Percent Area)

	None	D0	D1	D2	D3	D4
Current	40.59	16.06	31.03	10.63	1.68	0.00
Last Week <i>08-30-2012</i>	40.54	23.19	28.54	7.59	0.13	0.00
3 Months Ago <i>06-07-2012</i>	78.54	16.58	4.62	0.27	0.00	0.00
Start of Calendar Year <i>01-05-2012</i>	65.18	29.41	5.41	0.00	0.00	0.00
Start of Water Year <i>09-29-2011</i>	79.21	20.79	0.00	0.00	0.00	0.00
One Year Ago <i>09-08-2011</i>	100.00	0.00	0.00	0.00	0.00	0.00



Intensity:



The Drought Monitor focuses on broad-scale conditions. Local conditions may vary. For more information on the Drought Monitor, go to <https://droughtmonitor.unl.edu/About.aspx>

Author:

Brian Fuchs
National Drought Mitigation Center

