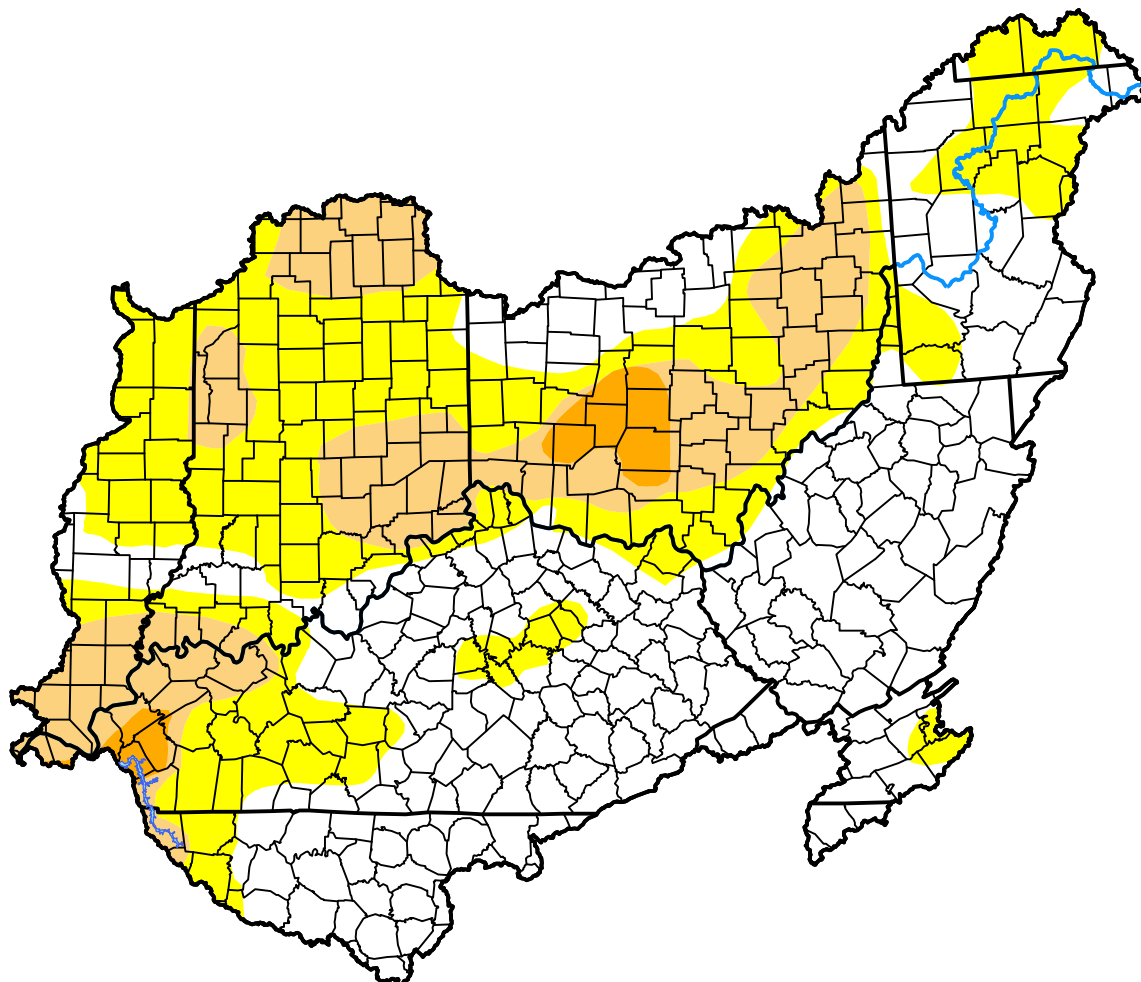


U.S. Drought Monitor Ohio Watershed

October 9, 2012
(Released Thursday, Oct. 11, 2012)
Valid 8 a.m. EDT



Drought Conditions (Percent Area)

	None	D0-D4	D1-D4	D2-D4	D3-D4	D4
Current	48.74	51.26	19.26	2.29	0.00	0.00
Last Week 10-04-2012	41.86	58.14	32.10	7.63	0.00	0.00
3 Months Ago 07-12-2012	0.50	99.50	67.12	37.63	11.31	0.83
Start of Calendar Year 01-05-2012	100.00	0.00	0.00	0.00	0.00	0.00
Start of Water Year 09-27-2012	37.98	62.02	38.28	11.90	0.00	0.00
One Year Ago 10-13-2011	89.98	10.02	2.94	0.00	0.00	0.00

Intensity:

None	D2 Severe Drought
D0 Abnormally Dry	D3 Extreme Drought
D1 Moderate Drought	D4 Exceptional Drought

The Drought Monitor focuses on broad-scale conditions. Local conditions may vary. For more information on the Drought Monitor, go to <https://droughtmonitor.unl.edu/About.aspx>

Author:

Matthew Rosencrans
CPC/NCEP/NWS/NOAA



droughtmonitor.unl.edu