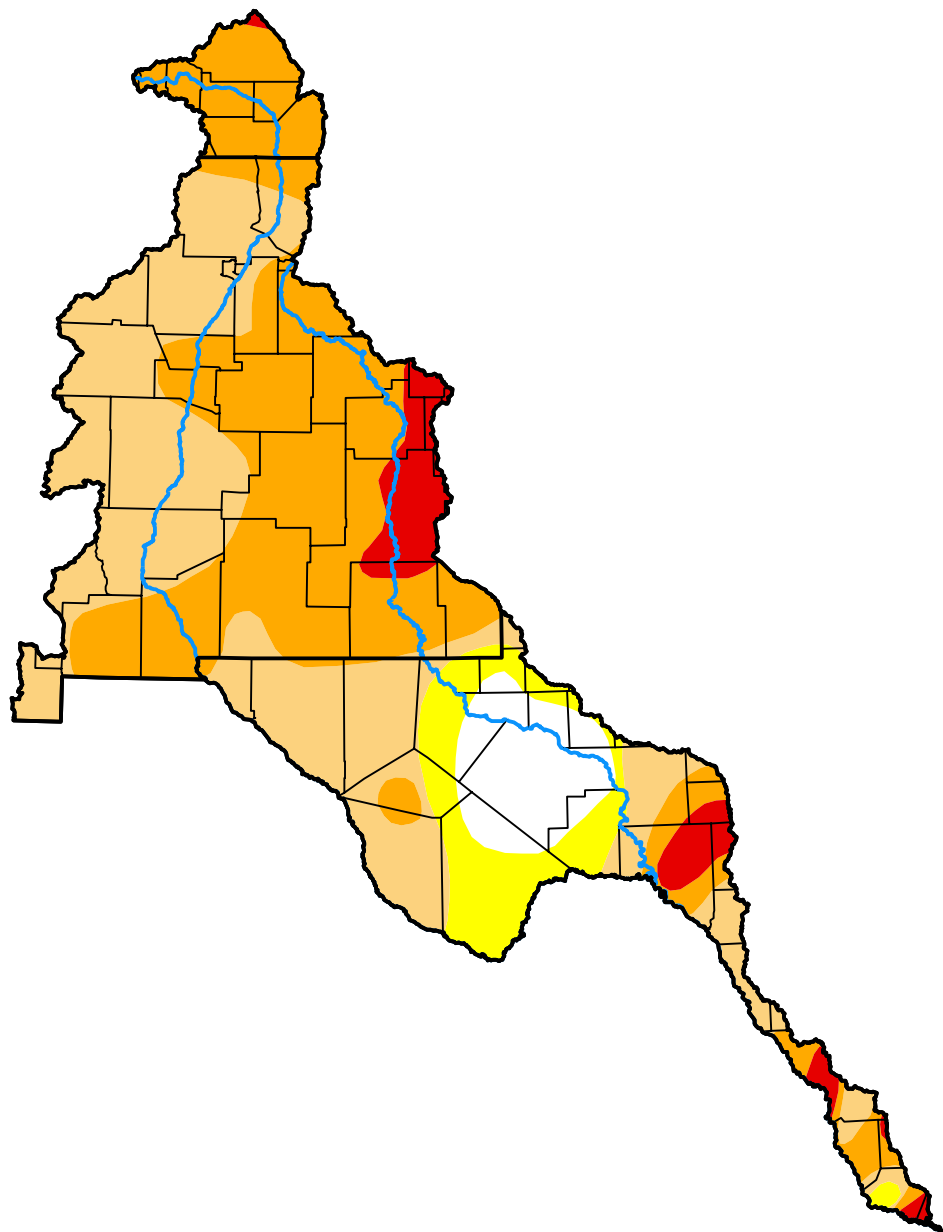


# U.S. Drought Monitor Rio Grande Watershed

**October 9, 2012**  
(Released Thursday, Oct. 11, 2012)  
Valid 8 a.m. EDT



*Drought Conditions (Percent Area)*

|  | None | D0-D4  | D1-D4 | D2-D4 | D3-D4 | D4    |
|--|------|--------|-------|-------|-------|-------|
| <b>Current</b>   | 7.43 | 92.57  | 84.14 | 45.12 | 6.06  | 0.00  |
| <b>Last Week</b><br><i>10-04-2012</i>                  | 7.42 | 92.58  | 83.96 | 45.12 | 6.06  | 0.00  |
| <b>3 Months Ago</b><br><i>07-12-2012</i>               | 0.00 | 100.00 | 97.04 | 67.18 | 20.97 | 0.00  |
| <b>Start of<br/>Calendar Year</b><br><i>01-05-2012</i> | 1.79 | 98.21  | 95.50 | 86.56 | 49.92 | 26.59 |
| <b>Start of<br/>Water Year</b><br><i>09-27-2012</i>    | 1.09 | 98.91  | 87.07 | 54.06 | 9.98  | 0.00  |
| <b>One Year Ago</b><br><i>10-13-2011</i>               | 0.08 | 99.92  | 99.14 | 94.31 | 75.76 | 40.26 |

**Intensity:**

|                     |                        |
|---------------------|------------------------|
| None                | D2 Severe Drought      |
| D0 Abnormally Dry   | D3 Extreme Drought     |
| D1 Moderate Drought | D4 Exceptional Drought |

*The Drought Monitor focuses on broad-scale conditions. Local conditions may vary. For more information on the Drought Monitor, go to <https://droughtmonitor.unl.edu/About.aspx>*

**Author:**

Matthew Rosencrans  
CPC/NCEP/NWS/NOAA



**droughtmonitor.unl.edu**