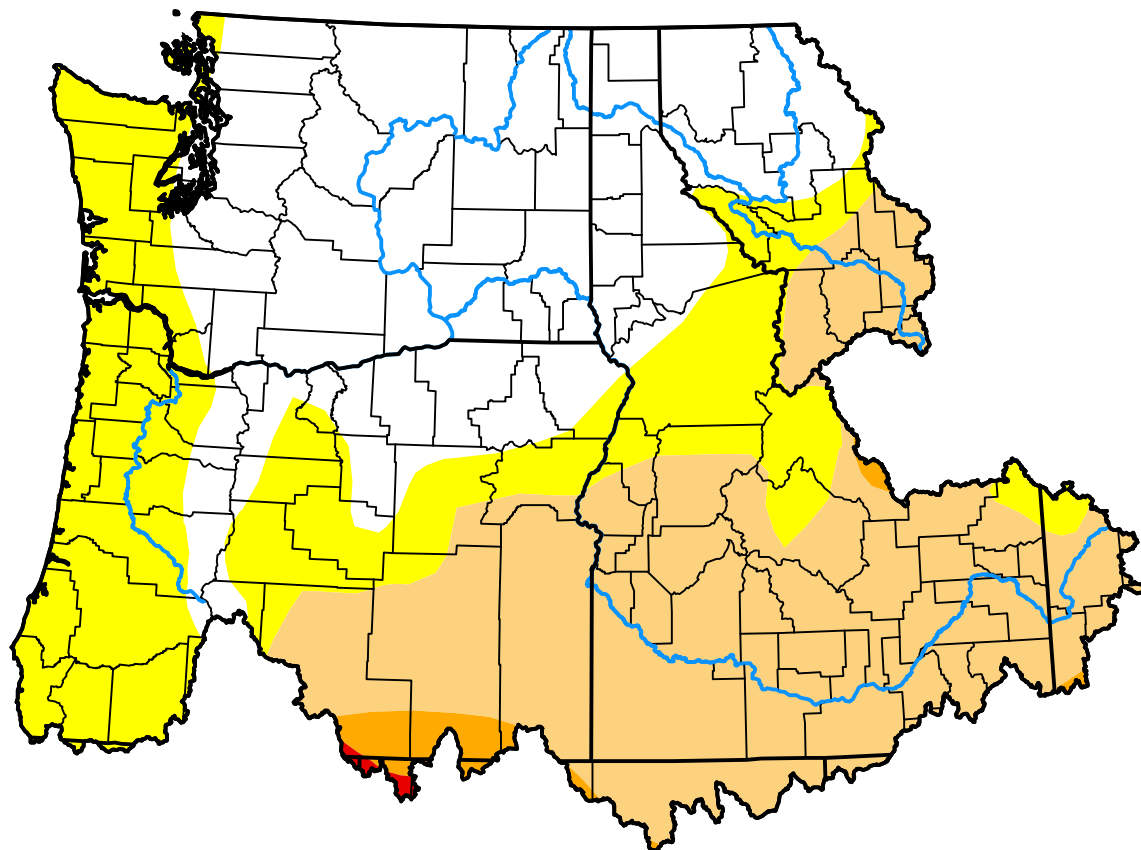


# U.S. Drought Monitor Pacific Northwest Watershed

**October 9, 2012**  
(Released Thursday, Oct. 11, 2012)  
Valid 8 a.m. EDT



*Drought Conditions (Percent Area)*

	None	D0	D1	D2	D3	D4
<b>Current</b>	37.98	26.82	33.54	1.50	0.16	0.00
<b>Last Week</b> 10-04-2012	46.51	18.94	32.89	1.39	0.27	0.00
<b>3 Months Ago</b> 07-12-2012	62.04	31.05	6.45	0.46	0.00	0.00
<b>Start of Calendar Year</b> 01-05-2012	53.75	39.19	7.06	0.00	0.00	0.00
<b>Start of Water Year</b> 09-27-2012	52.78	12.67	32.89	1.39	0.27	0.00
<b>One Year Ago</b> 10-13-2011	98.94	1.06	0.00	0.00	0.00	0.00

## Intensity:

None	D2 Severe Drought
D0 Abnormally Dry	D3 Extreme Drought
D1 Moderate Drought	D4 Exceptional Drought

*The Drought Monitor focuses on broad-scale conditions. Local conditions may vary. For more information on the Drought Monitor, go to <https://droughtmonitor.unl.edu/About.aspx>*

## Author:

Matthew Rosencrans  
CPC/NCEP/NWS/NOAA



**droughtmonitor.unl.edu**