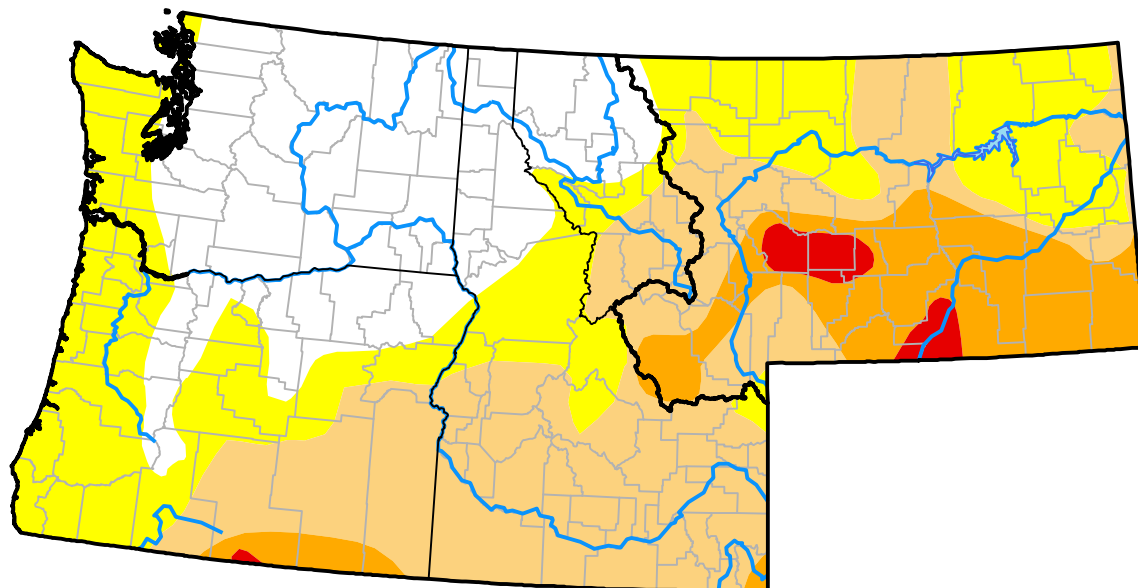


Northwest RDEWS and Surrounding Areas

Drought Conditions (Percent Area)

	None	D0-D4	D1-D4	D2-D4	D3-D4	D4
Current	26.59	73.41	44.50	12.70	1.61	0.00
Last Week 10-04-2012	36.07	63.93	44.35	12.70	1.69	0.00
3 Months Ago 07-12-2012	53.28	46.72	16.95	2.38	0.00	0.00
Start of Calendar Year 01-05-2012	65.18	34.82	5.41	0.00	0.00	0.00
Start of Water Year 09-27-2012	40.62	59.38	44.35	12.15	1.69	0.00
One Year Ago 10-13-2011	99.06	0.94	0.00	0.00	0.00	0.00

Intensity:

None	D2 Severe Drought
D0 Abnormally Dry	D3 Extreme Drought
D1 Moderate Drought	D4 Exceptional Drought

The Drought Monitor focuses on broad-scale conditions. Local conditions may vary. For more information on the Drought Monitor, go to <https://droughtmonitor.unl.edu/About.aspx>

Author:

Matthew Rosencrans
CPC/NCEP/NWS/NOAA

