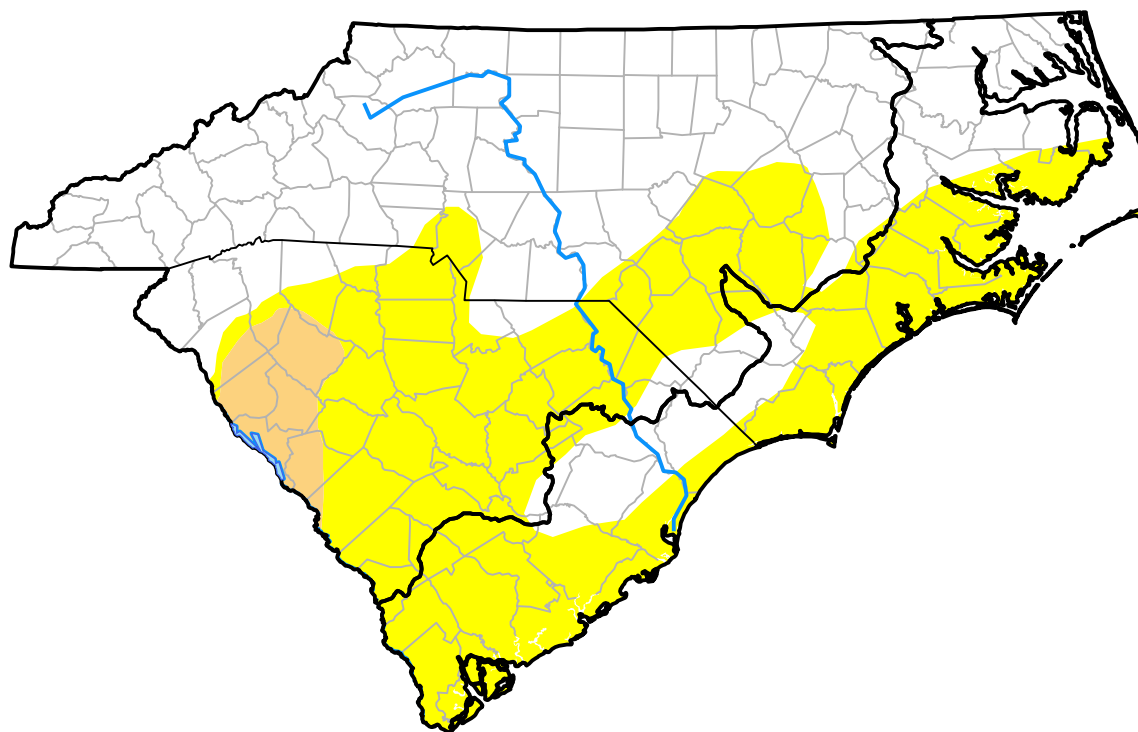


U.S. Drought Monitor

Coastal Carolinas RDEWS

October 16, 2012
(Released Thursday, Oct. 18, 2012)

Valid 8 a.m. EDT



Drought Conditions (Percent Area)

	None	D0	D1	D2	D3	D4
Current	30.95	69.05	0.00	0.00	0.00	0.00
Last Week <i>10-11-2012</i>	81.76	18.24	0.00	0.00	0.00	0.00
3 Months Ago <i>07-19-2012</i>	45.21	20.74	34.05	0.00	0.00	0.00
Start of Calendar Year <i>01-05-2012</i>	0.22	18.48	62.69	6.97	11.65	0.00
Start of Water Year <i>09-27-2012</i>	81.76	18.24	0.00	0.00	0.00	0.00
One Year Ago <i>10-20-2011</i>	46.62	15.71	20.65	6.00	11.01	0.00

Intensity:



The Drought Monitor focuses on broad-scale conditions. Local conditions may vary. For more information on the Drought Monitor, go to <https://droughtmonitor.unl.edu/About.aspx>

Author:

Matthew Rosencrans
 CPC/NCEP/NWS/NOAA



droughtmonitor.unl.edu