

# U.S. Drought Monitor

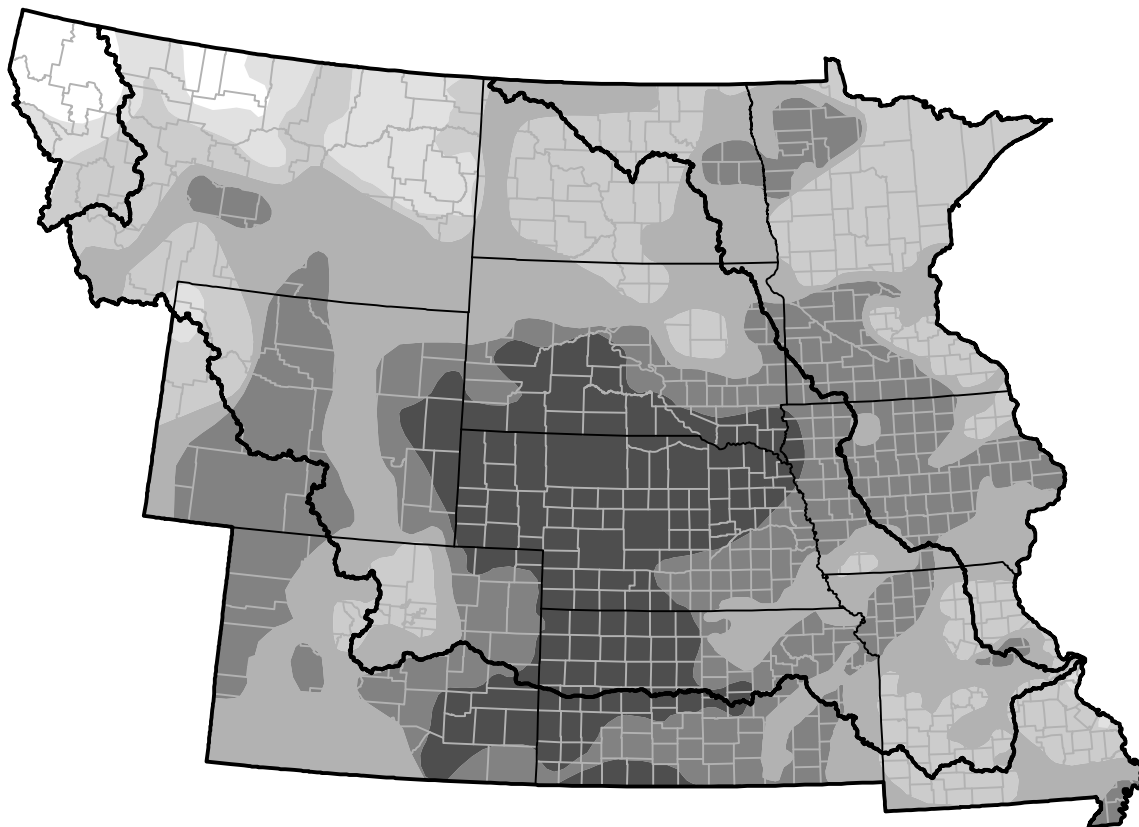
## Missouri River Basin RDEWS

**October 16, 2012**  
*(Released Thursday, Oct. 18, 2012)*

Valid 8 a.m. EDT

*Drought Conditions (Percent Area)*

	None	D0	D1	D2	D3	D4
<b>Current</b>	1.27	7.15	18.43	28.89	21.51	22.74
<b>Last Week</b> <i>10-11-2012</i>	0.13	7.81	16.93	29.08	22.86	23.19
<b>3 Months Ago</b> <i>07-19-2012</i>	10.00	13.07	24.49	41.34	10.95	0.15
<b>Start of Calendar Year</b> <i>01-05-2012</i>	74.43	19.07	4.52	1.97	0.00	0.00
<b>Start of Water Year</b> <i>09-27-2012</i>	2.91	5.31	18.52	26.35	28.42	18.49
<b>One Year Ago</b> <i>10-20-2011</i>	78.93	13.53	6.37	1.17	0.00	0.00



***Intensity:***



*The Drought Monitor focuses on broad-scale conditions. Local conditions may vary. For more information on the Drought Monitor, go to <https://droughtmonitor.unl.edu/About.aspx>*

***Author:***

Matthew Rosencrans  
 CPC/NCEP/NWS/NOAA



**droughtmonitor.unl.edu**