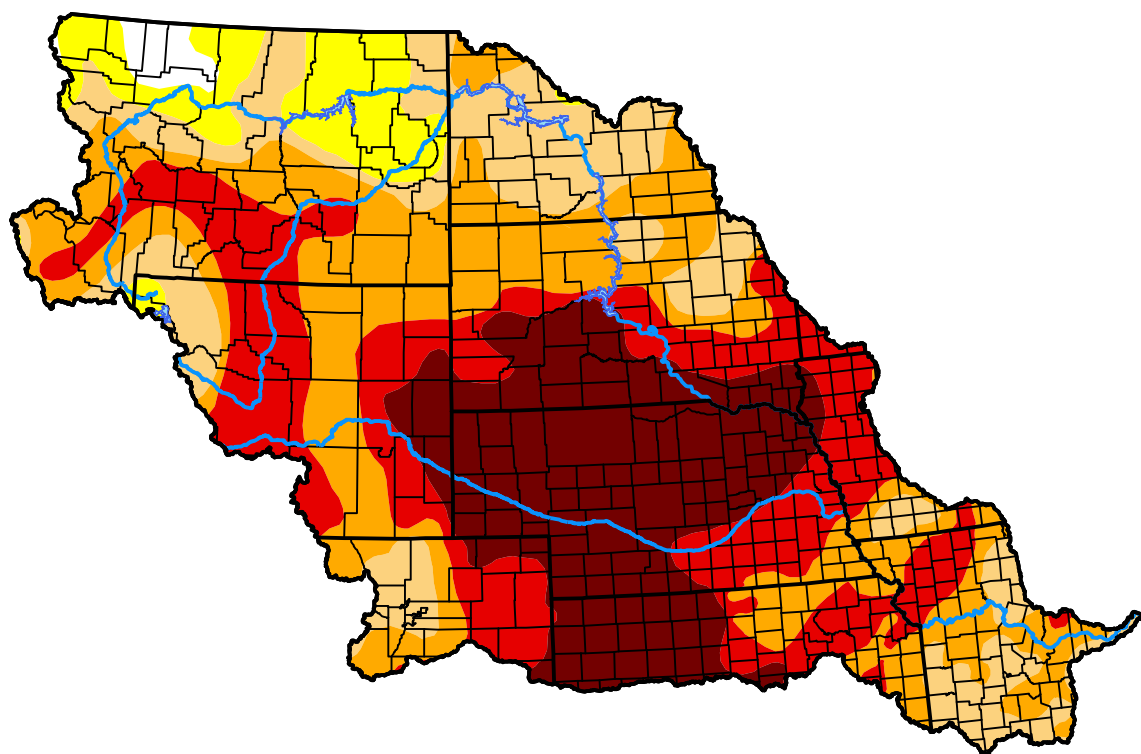


# U.S. Drought Monitor Missouri Watershed

**October 23, 2012**  
(Released Thursday, Oct. 25, 2012)  
Valid 8 a.m. EDT



## Drought Conditions (Percent Area)

	None	D0-D4	D1-D4	D2-D4	D3-D4	D4
<b>Current</b>	1.20	98.80	91.78	74.11	46.63	22.76
<b>Last Week</b> <i>10-18-2012</i>	1.18	98.82	91.71	73.27	44.31	22.76
<b>3 Months Ago</b> <i>07-26-2012</i>	8.90	91.10	77.73	64.88	29.29	1.01
<b>Start of Calendar Year</b> <i>01-05-2012</i>	74.38	25.62	6.51	1.98	0.00	0.00
<b>Start of Water Year</b> <i>09-27-2012</i>	2.82	97.18	91.90	73.35	46.98	18.50
<b>One Year Ago</b> <i>10-27-2011</i>	77.65	22.35	9.47	2.15	0.03	0.00

## Intensity:

None	D2 Severe Drought
D0 Abnormally Dry	D3 Extreme Drought
D1 Moderate Drought	D4 Exceptional Drought

The Drought Monitor focuses on broad-scale conditions. Local conditions may vary. For more information on the Drought Monitor, go to <https://droughtmonitor.unl.edu/About.aspx>

## Author:

Brad Rippey  
U.S. Department of Agriculture



[droughtmonitor.unl.edu](https://droughtmonitor.unl.edu)