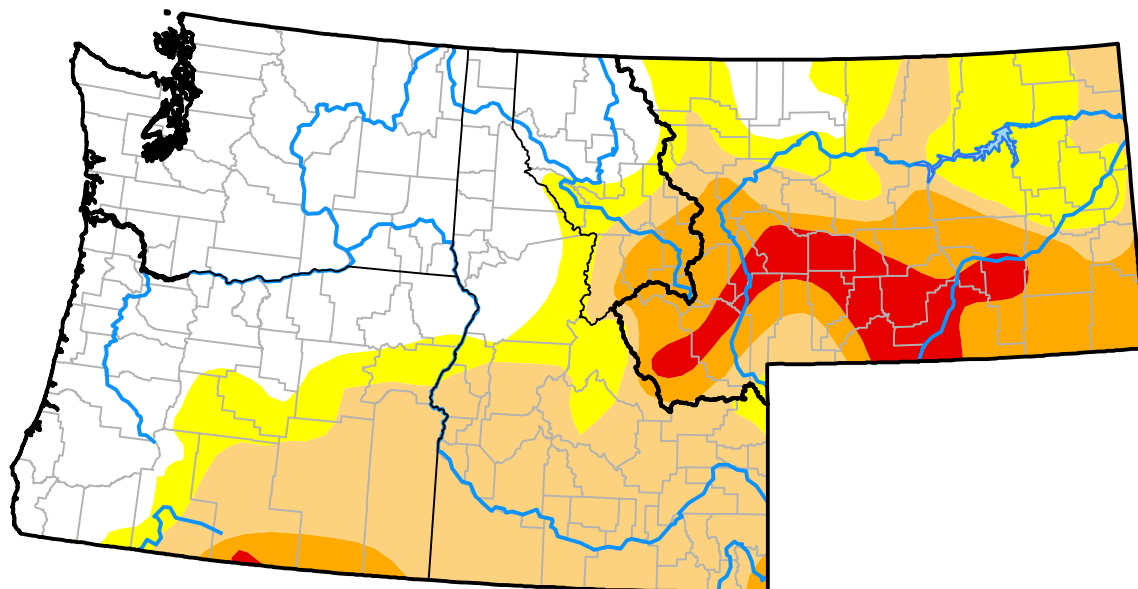


Northwest RDEWS and Surrounding Areas

Drought Conditions (Percent Area)

	None	D0	D1	D2	D3	D4
Current	39.46	16.56	27.69	11.45	4.84	0.00
Last Week 10-18-2012	37.04	19.11	31.11	11.13	1.61	0.00
3 Months Ago 07-26-2012	54.93	22.52	15.79	6.76	0.00	0.00
Start of Calendar Year 01-05-2012	65.18	29.41	5.41	0.00	0.00	0.00
Start of Water Year 09-27-2012	40.62	15.03	32.20	10.46	1.69	0.00
One Year Ago 10-27-2011	97.69	2.31	0.00	0.00	0.00	0.00



Intensity:

None	D2 Severe Drought
D0 Abnormally Dry	D3 Extreme Drought
D1 Moderate Drought	D4 Exceptional Drought

The Drought Monitor focuses on broad-scale conditions. Local conditions may vary. For more information on the Drought Monitor, go to <https://droughtmonitor.unl.edu/About.aspx>

Author:

Brad Rippey
U.S. Department of Agriculture

