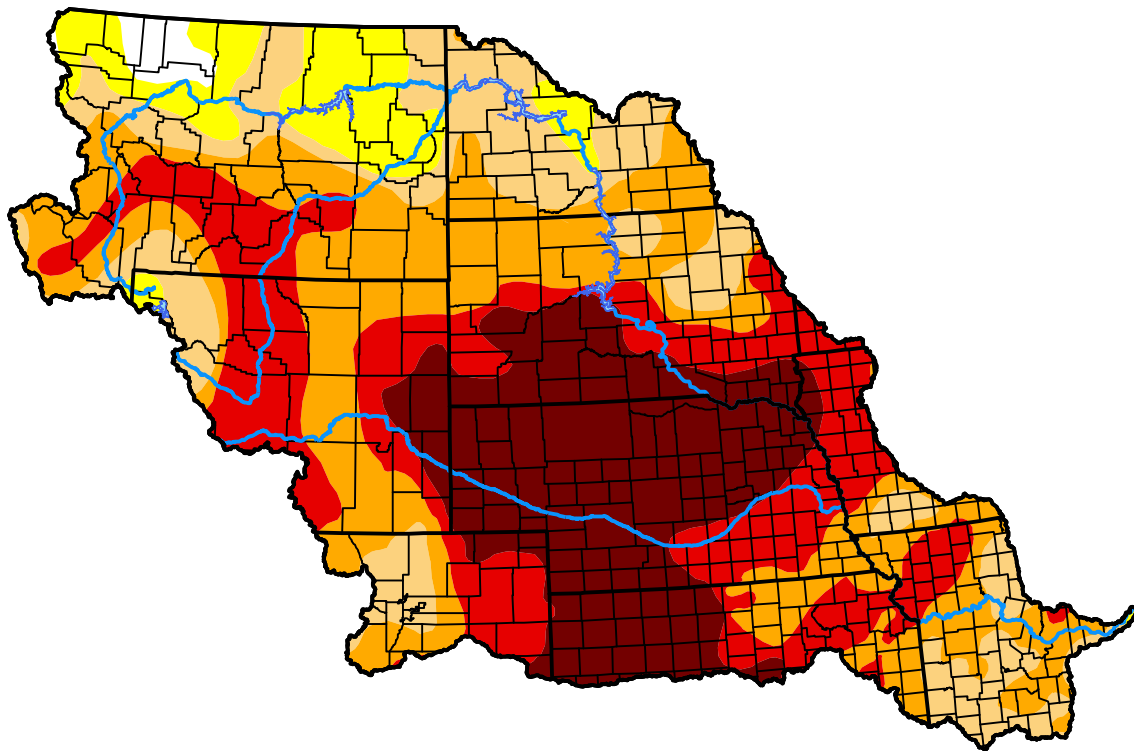


U.S. Drought Monitor Missouri Watershed

October 30, 2012
(Released Thursday, Nov. 1, 2012)
Valid 8 a.m. EDT

Drought Conditions (Percent Area)

	None	D0-D4	D1-D4	D2-D4	D3-D4	D4
Current	1.20	98.80	91.04	73.52	46.16	22.76
Last Week <i>10-25-2012</i>	1.20	98.80	91.78	74.11	46.63	22.76
3 Months Ago <i>08-02-2012</i>	5.11	94.89	77.96	65.51	34.12	2.13
Start of Calendar Year <i>01-05-2012</i>	74.38	25.62	6.51	1.98	0.00	0.00
Start of Water Year <i>09-27-2012</i>	2.82	97.18	91.90	73.35	46.98	18.50
One Year Ago <i>11-03-2011</i>	74.08	25.92	17.27	2.94	0.36	0.00



Intensity:



The Drought Monitor focuses on broad-scale conditions. Local conditions may vary. For more information on the Drought Monitor, go to <https://droughtmonitor.unl.edu/About.aspx>

Author:

Michael Brewer
NCEI/NOAA



droughtmonitor.unl.edu