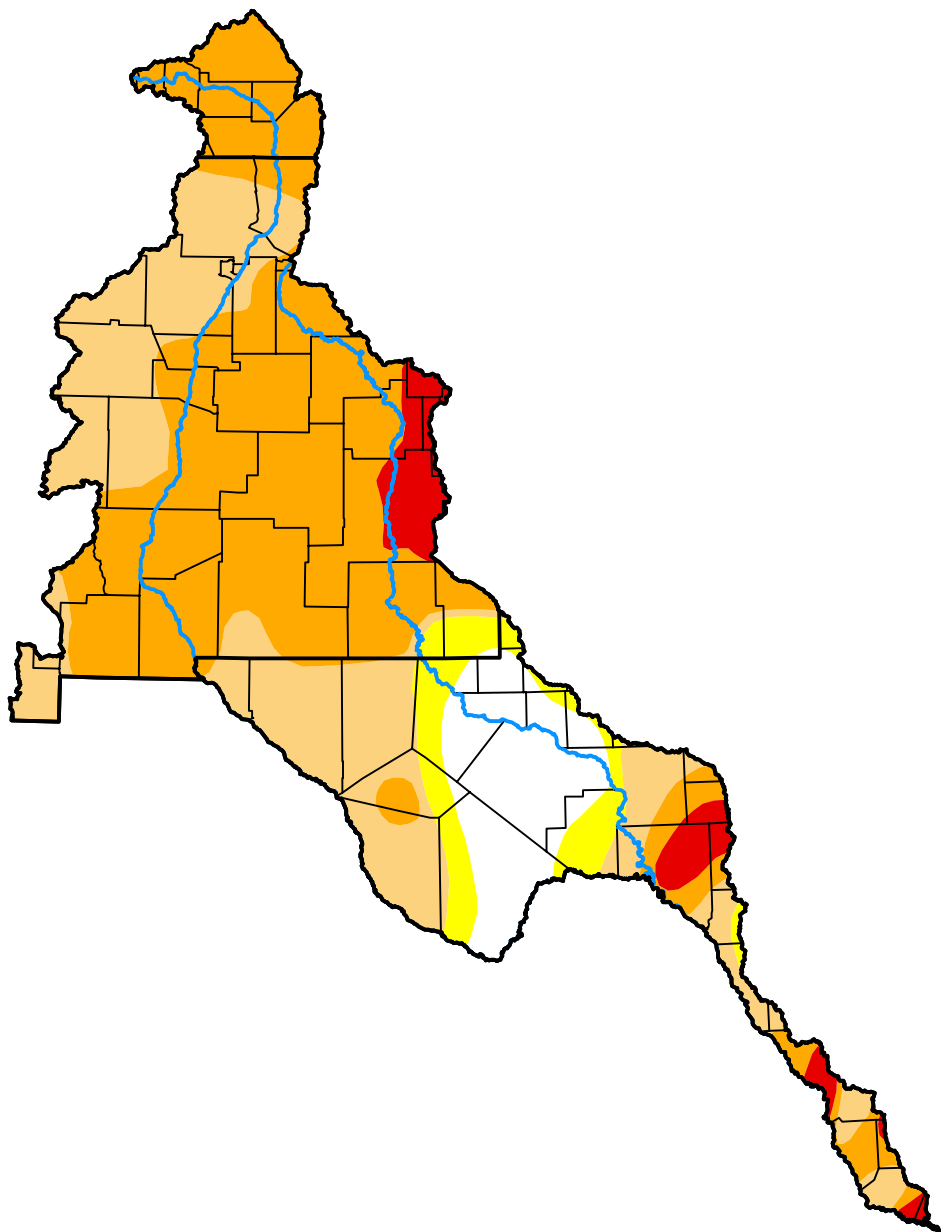


U.S. Drought Monitor

Rio Grande Watershed

October 30, 2012
 (Released Thursday, Nov. 1, 2012)
 Valid 8 a.m. EDT



Drought Conditions (Percent Area)

	None	D0-D4	D1-D4	D2-D4	D3-D4	D4
Current	10.95	89.05	82.73	51.90	5.27	0.00
Last Week <i>10-25-2012</i>	10.97	89.03	82.93	48.90	5.26	0.00
3 Months Ago <i>08-02-2012</i>	0.00	100.00	90.34	59.79	17.19	0.00
Start of Calendar Year <i>01-05-2012</i>	1.79	98.21	95.50	86.56	49.92	26.59
Start of Water Year <i>09-27-2012</i>	1.09	98.91	87.07	54.06	9.98	0.00
One Year Ago <i>11-03-2011</i>	0.07	99.93	98.26	93.25	74.41	40.26

Intensity:

- None
- D0 Abnormally Dry
- D1 Moderate Drought
- D2 Severe Drought
- D3 Extreme Drought
- D4 Exceptional Drought

The Drought Monitor focuses on broad-scale conditions. Local conditions may vary. For more information on the Drought Monitor, go to <https://droughtmonitor.unl.edu/About.aspx>

Author:

Michael Brewer
 NCEI/NOAA



droughtmonitor.unl.edu