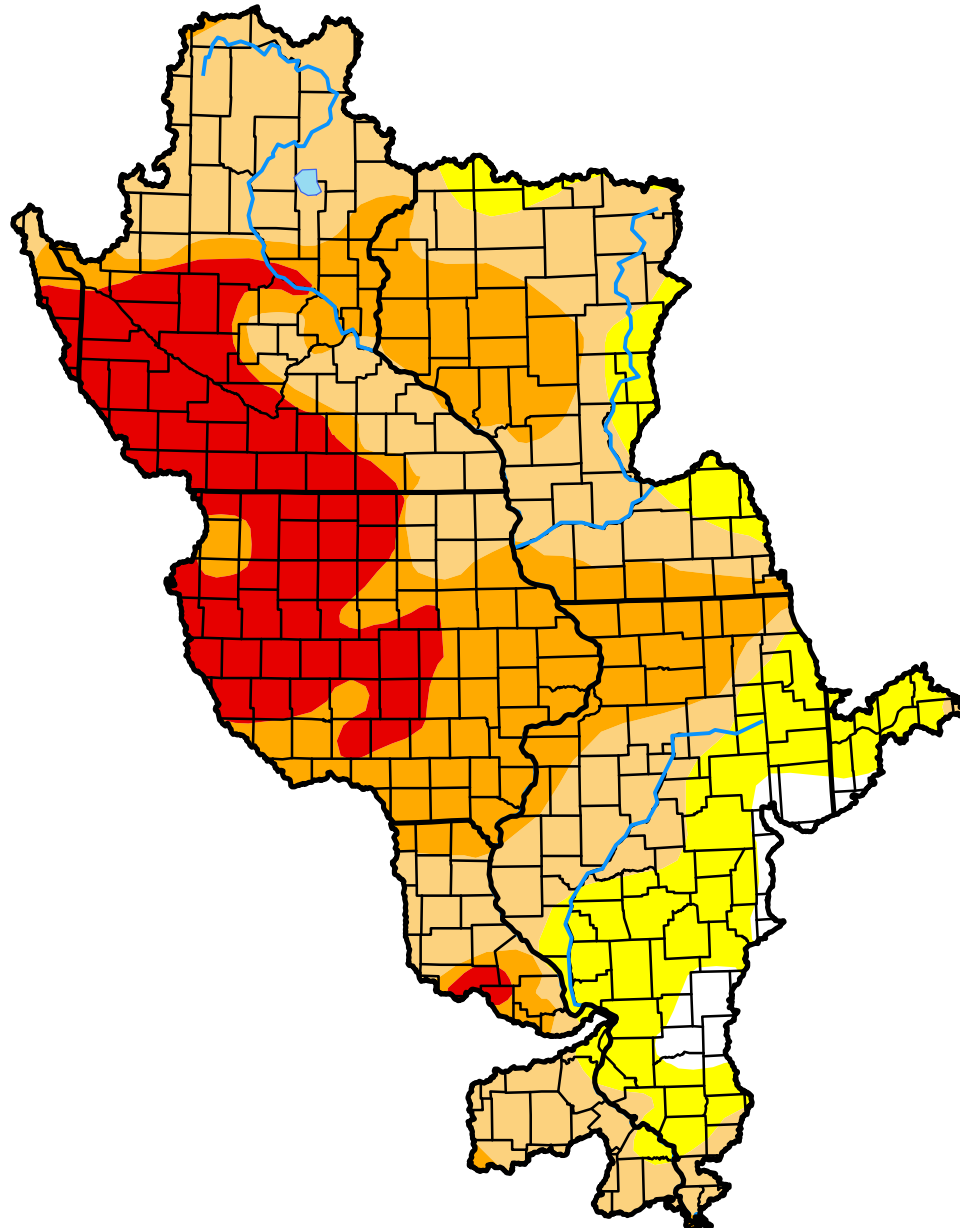


U.S. Drought Monitor

Upper Mississippi Watershed

November 6, 2012
 (Released Thursday, Nov. 8, 2012)
 Valid 7 a.m. EST



Drought Conditions (Percent Area)

	None	D0-D4	D1-D4	D2-D4	D3-D4	D4
Current	2.44	97.56	82.22	45.53	18.07	0.00
Last Week <i>10-30-2012</i>	2.36	97.64	82.16	45.53	18.07	0.00
3 Months Ago <i>08-07-2012</i>	23.66	76.34	71.12	63.10	43.07	1.27
Start of Calendar Year <i>01-03-2012</i>	57.95	42.05	18.59	11.21	0.00	0.00
Start of Water Year <i>09-25-2012</i>	0.01	99.99	85.21	54.60	20.08	0.00
One Year Ago <i>11-08-2011</i>	38.97	61.03	30.96	12.63	0.00	0.00

Intensity:

- D0 Abnormally Dry
- D1 Moderate Drought
- D2 Severe Drought
- D3 Extreme Drought
- D4 Exceptional Drought

The Drought Monitor focuses on broad-scale conditions. Local conditions may vary. See accompanying text summary for forecast statements.

Author:

David Miskus
 NOAA/NWS/NCEP/CPC

