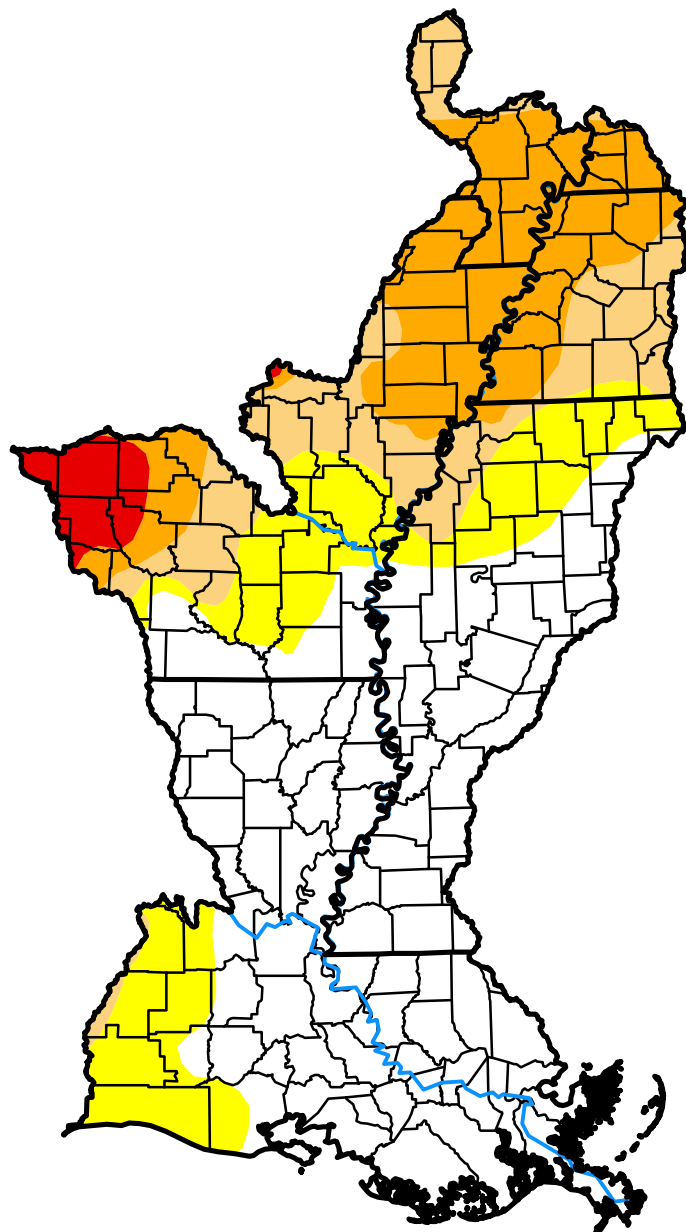


U.S. Drought Monitor

Lower Mississippi Watershed

November 6, 2012
 (Released Thursday, Nov. 8, 2012)
 Valid 7 a.m. EST



Drought Conditions (Percent Area)

| | None | D0 | D1 | D2 | D3 | D4 |
|--|-------|-------|-------|-------|-------|-------|
| Current | 50.38 | 16.78 | 13.17 | 17.01 | 2.66 | 0.00 |
| Last Week <i>10-30-2012</i> | 55.38 | 10.74 | 11.21 | 16.66 | 6.01 | 0.00 |
| 3 Months Ago <i>08-07-2012</i> | 35.02 | 9.10 | 12.04 | 13.94 | 15.53 | 14.37 |
| Start of Calendar Year <i>01-03-2012</i> | 61.49 | 8.95 | 11.02 | 9.42 | 7.57 | 1.54 |
| Start of Water Year <i>09-25-2012</i> | 46.32 | 9.55 | 16.32 | 18.19 | 9.61 | 0.00 |
| One Year Ago <i>11-08-2011</i> | 16.70 | 19.85 | 35.15 | 9.22 | 8.62 | 10.45 |

Intensity:

- D0 Abnormally Dry
- D1 Moderate Drought
- D2 Severe Drought
- D3 Extreme Drought
- D4 Exceptional Drought

The Drought Monitor focuses on broad-scale conditions. Local conditions may vary. See accompanying text summary for forecast statements.

Author:

David Miskus
 NOAA/NWS/NCEP/CPC

