

U.S. Drought Monitor

Arkansas-White-Red Watershed

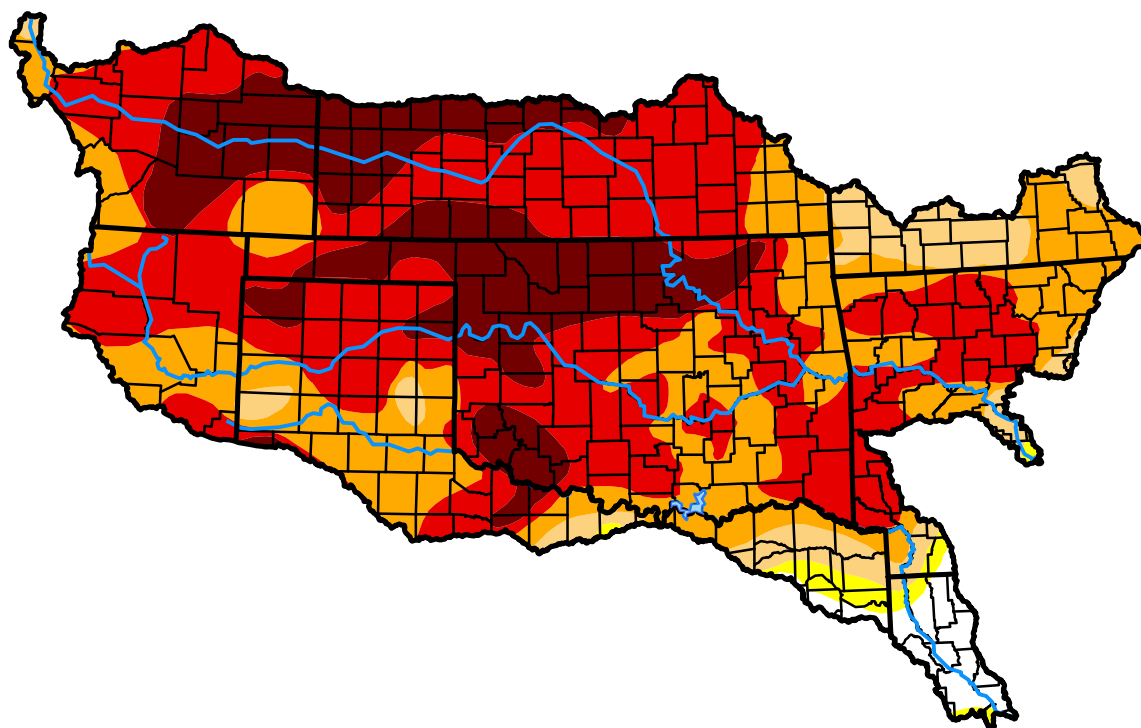
November 6, 2012

(Released Thursday, Nov. 8, 2012)

Valid 7 a.m. EST

Drought Conditions (Percent Area)

	None	D0-D4	D1-D4	D2-D4	D3-D4	D4
Current	2.61	97.39	95.99	89.21	62.49	20.04
Last Week <i>10-30-2012</i>	2.72	97.28	95.71	88.89	57.20	18.68
3 Months Ago <i>08-07-2012</i>	0.21	99.79	98.51	92.45	77.66	23.94
Start of Calendar Year <i>01-03-2012</i>	19.65	80.35	71.75	45.10	16.45	2.76
Start of Water Year <i>09-25-2012</i>	1.38	98.62	97.75	92.44	71.30	28.25
One Year Ago <i>11-08-2011</i>	4.33	95.67	90.50	78.59	54.44	24.59



Intensity:

- D0 Abnormally Dry
- D1 Moderate Drought
- D2 Severe Drought
- D3 Extreme Drought
- D4 Exceptional Drought

The Drought Monitor focuses on broad-scale conditions. Local conditions may vary. See accompanying text summary for forecast statements.

Author:

David Miskus
NOAA/NWS/NCEP/CPC

