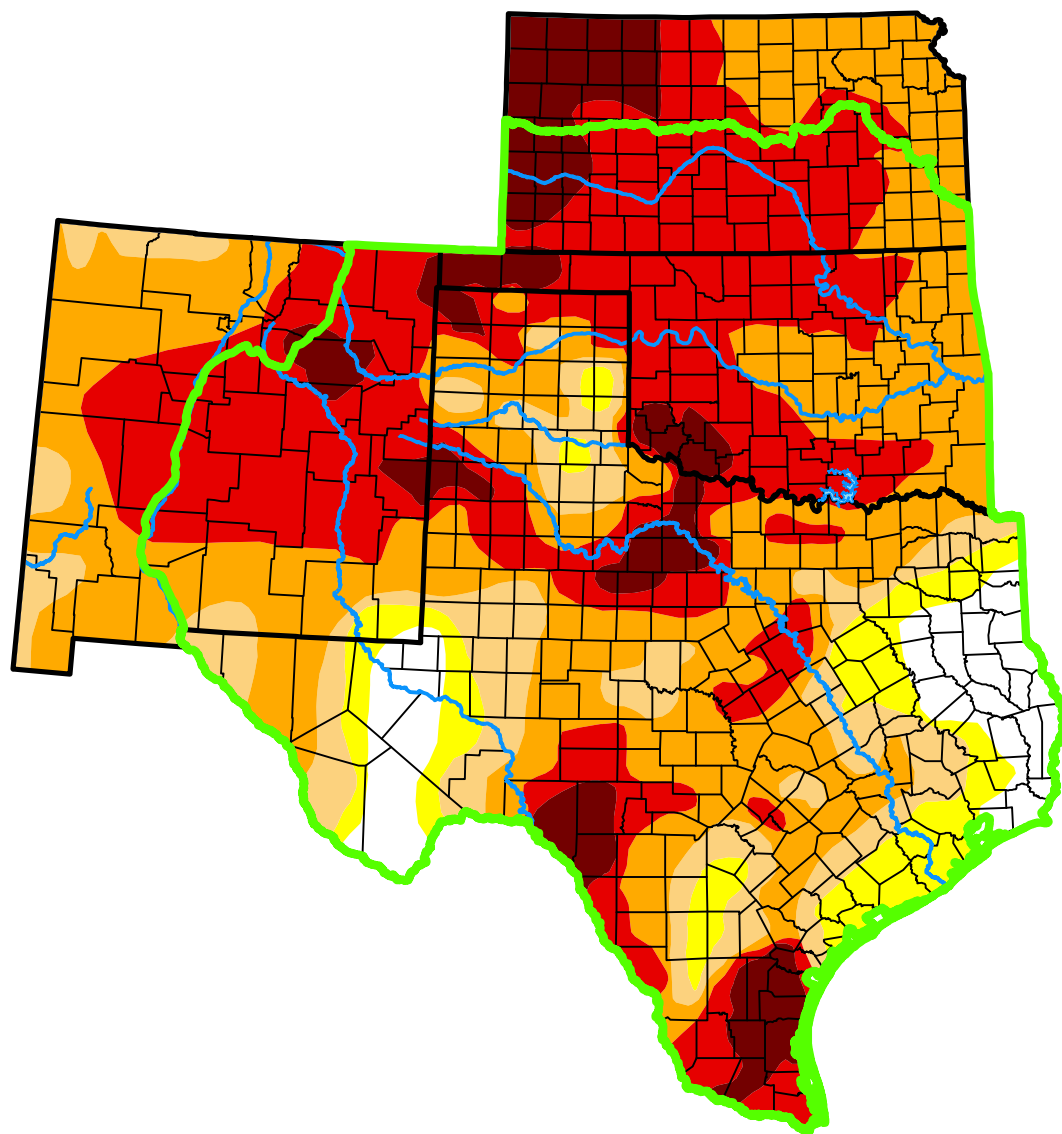


*U.S. Drought Monitor*

# Southern Plains DEWS and Surrounding Areas

**March 5, 2013**  
(Released Thursday, Mar. 7, 2013)  
Valid 7 a.m. EST



**Intensity:**



*The Drought Monitor focuses on broad-scale conditions. Local conditions may vary. For more information on the Drought Monitor, go to <https://droughtmonitor.unl.edu/About.aspx>*

**Author:**

Matthew Rosencrans  
CPC/NCEP/NWS/NOAA



**droughtmonitor.unl.edu**