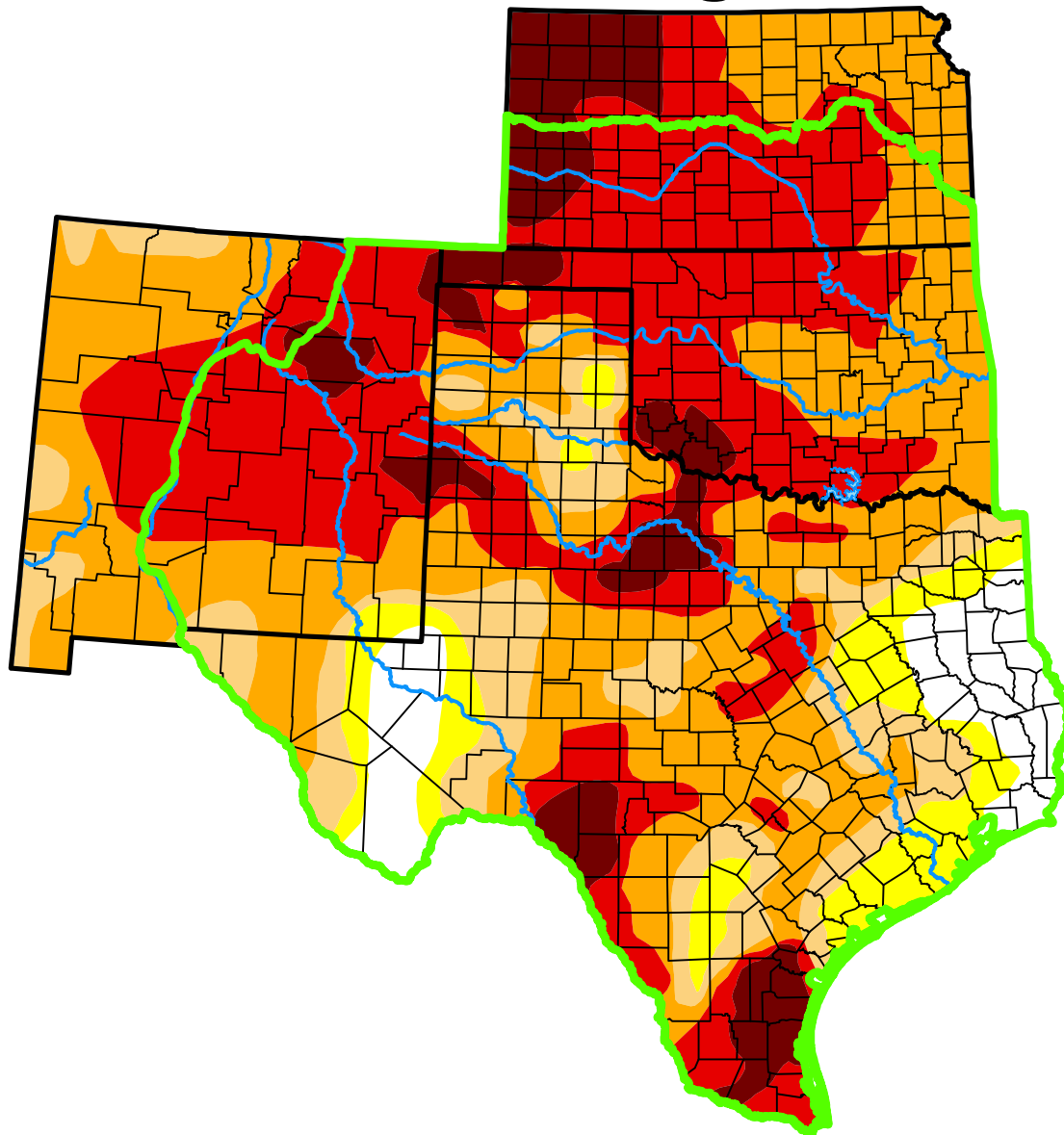


U.S. Drought Monitor

Southern Plains DEWS and Surrounding Areas



March 5, 2013

(Released Thursday, Mar. 7, 2013)

Valid 7 a.m. EST

Drought Conditions (Percent Area)

	None	D0-D4	D1-D4	D2-D4	D3-D4	D4
Current	6.78	93.22	85.30	72.32	42.51	8.38
Last Week <i>02-26-2013</i>	6.86	93.14	84.58	68.82	41.40	7.56
3 Months Ago <i>12-04-2012</i>	3.73	96.27	88.95	74.80	44.87	13.82
Start of Calendar Year <i>01-01-2013</i>	1.83	98.17	91.85	78.58	51.15	16.33
Start of Water Year <i>09-25-2012</i>	5.50	94.50	87.19	72.60	42.42	14.30
One Year Ago <i>03-06-2012</i>	7.75	92.25	85.54	65.80	36.98	15.60

(Statistics for area highlighted in green)

Intensity:

None	D2 Severe Drought
D0 Abnormally Dry	D3 Extreme Drought
D1 Moderate Drought	D4 Exceptional Drought

The Drought Monitor focuses on broad-scale conditions. Local conditions may vary. For more information on the Drought Monitor, go to <https://droughtmonitor.unl.edu/About.aspx>

Author:

Matthew Rosencrans
CPC/NCEP/NWS/NOAA



droughtmonitor.unl.edu