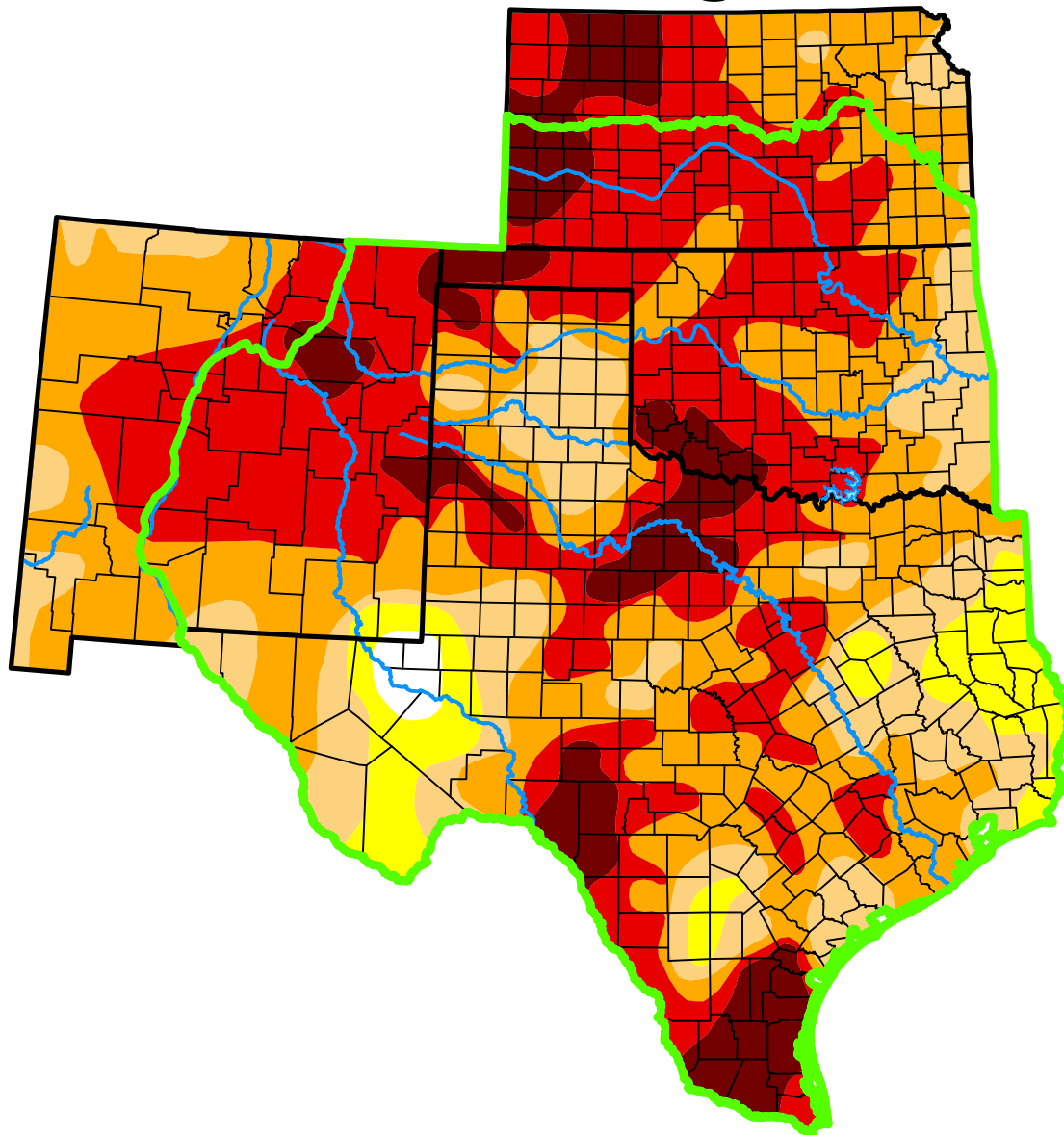


# U.S. Drought Monitor

## Southern Plains DEWS

### and Surrounding Areas



**March 26, 2013**

*(Released Thursday, Mar. 28, 2013)*

Valid 8 a.m. EDT

*Drought Conditions (Percent Area)*

	None	D0-D4	D1-D4	D2-D4	D3-D4	D4
<b>Current</b>	0.91	99.09	91.90	73.42	43.92	10.33
<b>Last Week</b> <i>03-19-2013</i>	2.25	97.75	90.56	71.93	43.06	9.89
<b>3 Months Ago</b> <i>12-25-2012</i>	2.74	97.26	92.63	77.82	50.15	15.34
<b>Start of Calendar Year</b> <i>01-01-2013</i>	1.83	98.17	91.85	78.58	51.15	16.33
<b>Start of Water Year</b> <i>09-25-2012</i>	5.50	94.50	87.19	72.60	42.42	14.30
<b>One Year Ago</b> <i>03-27-2012</i>	21.35	78.65	62.44	50.39	29.66	13.48

(Statistics for area highlighted in green)

#### Intensity:

None	D2 Severe Drought
D0 Abnormally Dry	D3 Extreme Drought
D1 Moderate Drought	D4 Exceptional Drought

*The Drought Monitor focuses on broad-scale conditions. Local conditions may vary. For more information on the Drought Monitor, go to <https://droughtmonitor.unl.edu/About.aspx>*

#### Author:

Anthony Artusa  
NOAA/NWS/NCEP/CPC



**droughtmonitor.unl.edu**