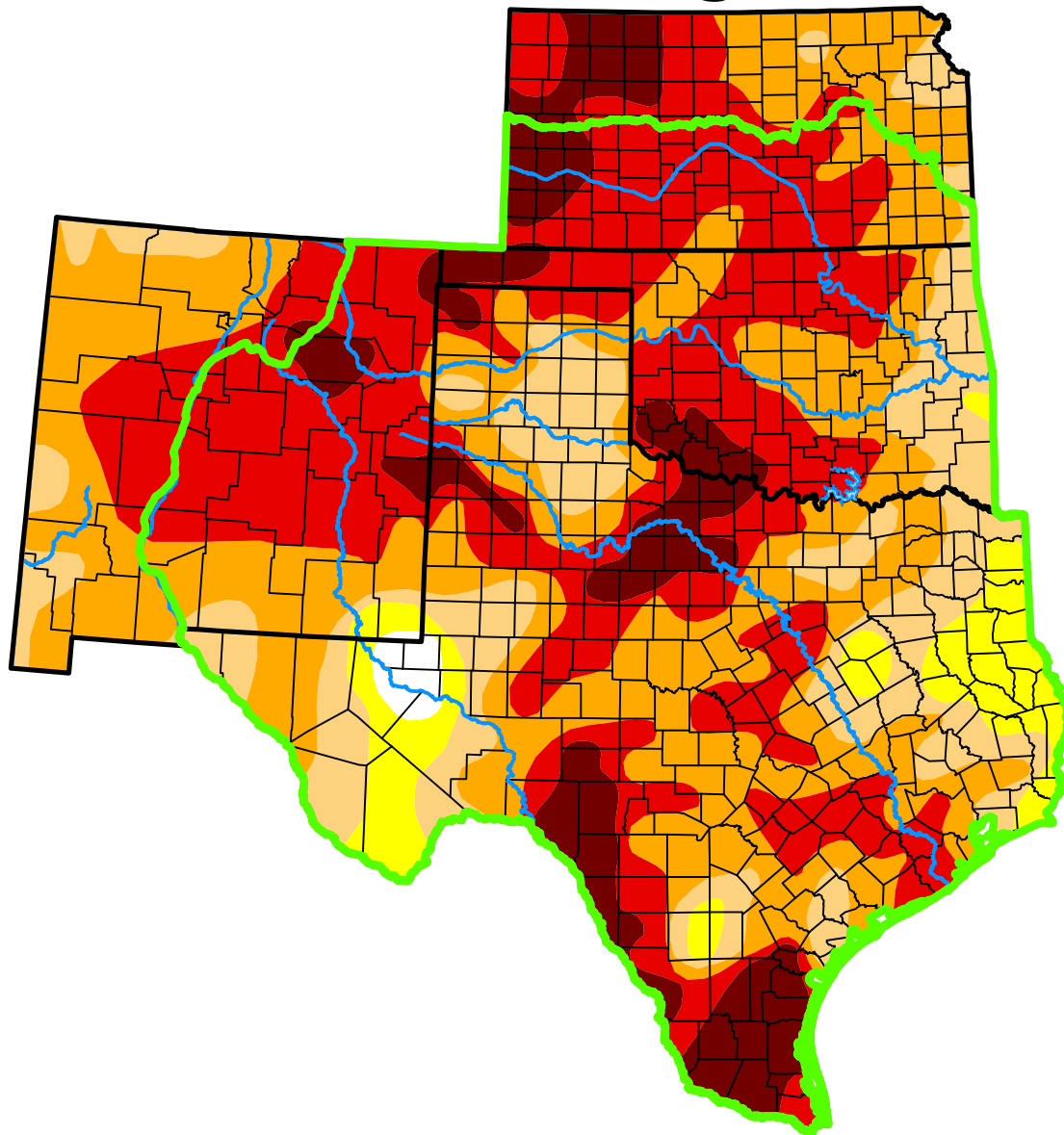


U.S. Drought Monitor

Southern Plains DEWS and Surrounding Areas



April 2, 2013

(Released Thursday, Apr. 4, 2013)

Valid 8 a.m. EDT

Drought Conditions (Percent Area)

	None	D0-D4	D1-D4	D2-D4	D3-D4	D4
Current	0.91	99.09	92.37	75.06	45.83	11.10
Last Week <i>03-26-2013</i>	0.91	99.09	91.90	73.42	43.92	10.33
3 Months Ago <i>01-01-2013</i>	1.83	98.17	91.85	78.58	51.15	16.33
Start of Calendar Year <i>01-01-2013</i>	1.83	98.17	91.85	78.58	51.15	16.33
Start of Water Year <i>09-25-2012</i>	5.50	94.50	87.19	72.60	42.42	14.30
One Year Ago <i>04-03-2012</i>	23.96	76.04	60.60	48.86	28.52	10.96

(Statistics for area highlighted in green)

Intensity:

None	D2 Severe Drought
D0 Abnormally Dry	D3 Extreme Drought
D1 Moderate Drought	D4 Exceptional Drought

The Drought Monitor focuses on broad-scale conditions. Local conditions may vary. For more information on the Drought Monitor, go to <https://droughtmonitor.unl.edu/About.aspx>

Author:

Richard Tinker
CPC/NOAA/NWS/NCEP



droughtmonitor.unl.edu