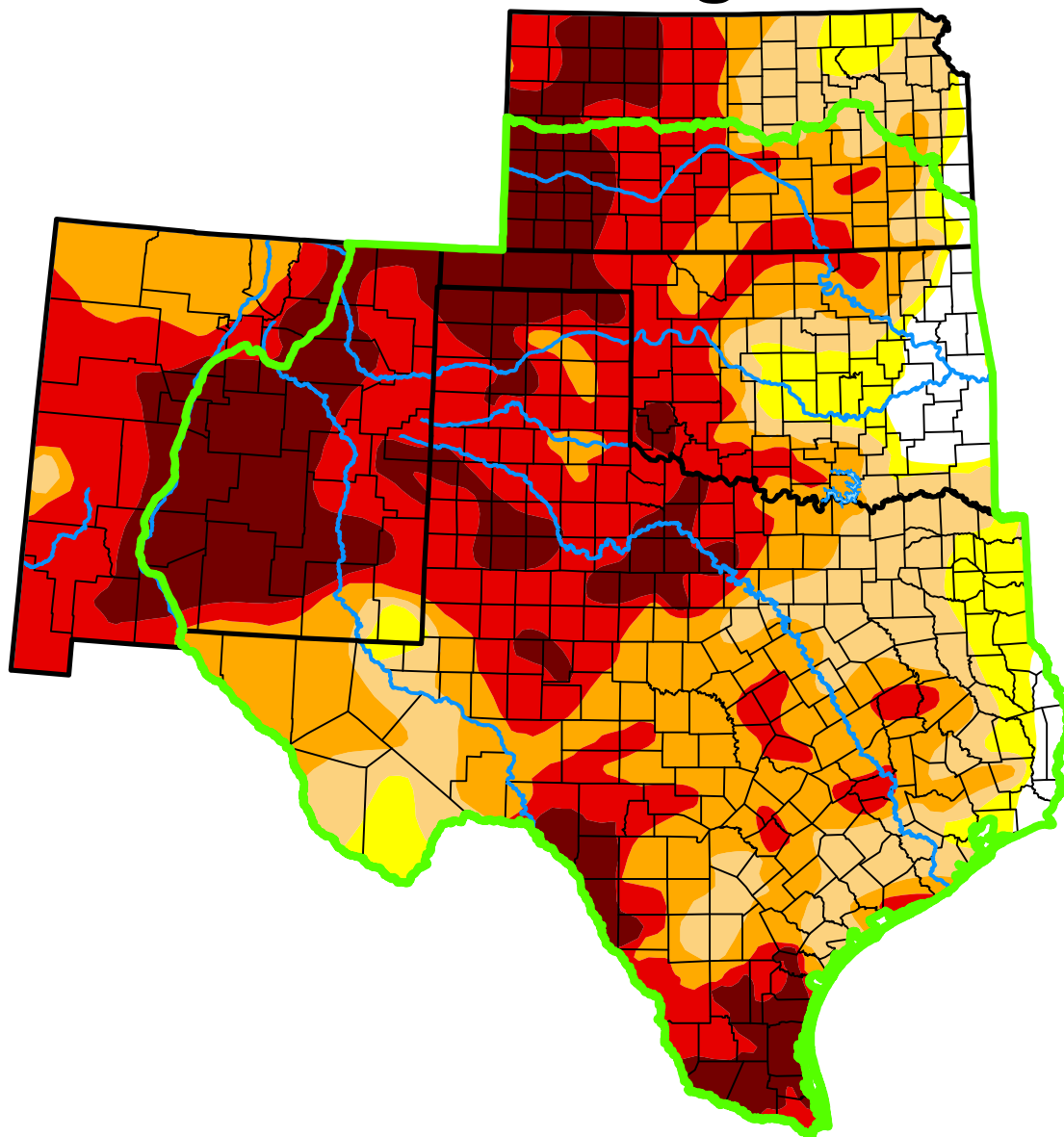


U.S. Drought Monitor

Southern Plains DEWS and Surrounding Areas



May 7, 2013

(Released Thursday, May. 9, 2013)

Valid 8 a.m. EDT

Drought Conditions (Percent Area)

	None	D0-D4	D1-D4	D2-D4	D3-D4	D4
Current	3.79	96.21	89.50	74.50	48.29	20.11
Last Week <i>04-30-2013</i>	3.58	96.42	89.52	75.63	46.38	13.74
3 Months Ago <i>02-05-2013</i>	5.79	94.21	85.87	70.52	43.48	14.25
Start of Calendar Year <i>01-01-2013</i>	1.83	98.17	91.85	78.58	51.15	16.33
Start of Water Year <i>09-25-2012</i>	5.50	94.50	87.19	72.60	42.42	14.30
One Year Ago <i>05-08-2012</i>	28.46	71.54	58.19	44.86	22.22	5.41

(Statistics for area highlighted in green)

Intensity:

None	D2 Severe Drought
D0 Abnormally Dry	D3 Extreme Drought
D1 Moderate Drought	D4 Exceptional Drought

The Drought Monitor focuses on broad-scale conditions. Local conditions may vary. For more information on the Drought Monitor, go to <https://droughtmonitor.unl.edu/About.aspx>

Author:

David Miskus
NOAA/NWS/NCEP/CPC



droughtmonitor.unl.edu