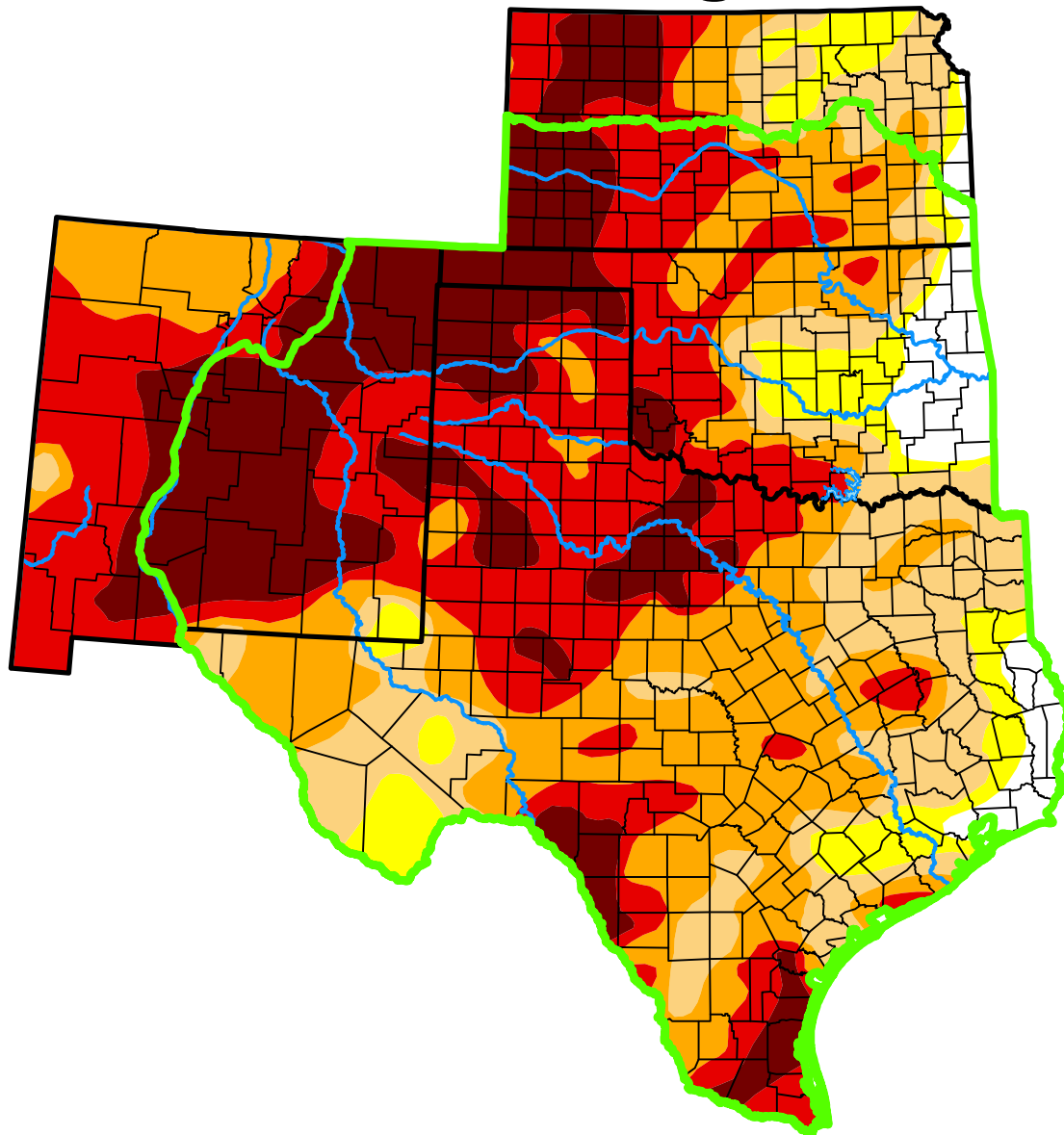


U.S. Drought Monitor

Southern Plains DEWS and Surrounding Areas



May 14, 2013

(Released Thursday, May. 16, 2013)

Valid 8 a.m. EDT

Drought Conditions (Percent Area)

	None	D0-D4	D1-D4	D2-D4	D3-D4	D4
Current	4.64	95.36	88.55	71.97	45.40	20.92
Last Week <i>05-07-2013</i>	3.79	96.21	89.50	74.50	48.29	20.11
3 Months Ago <i>02-12-2013</i>	6.59	93.41	84.89	68.96	43.43	14.25
Start of Calendar Year <i>01-01-2013</i>	1.83	98.17	91.85	78.58	51.15	16.33
Start of Water Year <i>09-25-2012</i>	5.50	94.50	87.19	72.60	42.42	14.30
One Year Ago <i>05-15-2012</i>	28.85	71.15	52.61	34.61	15.32	1.03

(Statistics for area highlighted in green)

Intensity:

None	D2 Severe Drought
D0 Abnormally Dry	D3 Extreme Drought
D1 Moderate Drought	D4 Exceptional Drought

The Drought Monitor focuses on broad-scale conditions. Local conditions may vary. For more information on the Drought Monitor, go to <https://droughtmonitor.unl.edu/About.aspx>

Author:

Richard Tinker
CPC/NOAA/NWS/NCEP



droughtmonitor.unl.edu