

# U.S. Drought Monitor

## Wind River and Surrounding Area

May 14, 2013

(Released Thursday, May. 16, 2013)

Valid 8 a.m. EDT

Drought Conditions (Percent Area)

	None	D0	D1	D2	D3	D4
<b>Current</b>	0.00	0.00	0.00	0.00	0.00	0.00
<b>Last Week</b> 05-09-2013	0.00	0.00	0.00	0.00	0.00	0.00
<b>3 Months Ago</b> 02-14-2013	0.00	0.00	0.00	0.00	0.00	0.00
<b>Start of Calendar Year</b> 01-03-2013	0.00	0.00	0.00	0.00	0.00	0.00
<b>Start of Water Year</b> 09-27-2012	0.00	0.00	0.00	0.00	0.00	0.00
<b>One Year Ago</b> 05-17-2012	0.00	0.00	0.00	0.00	0.00	0.00

Note: Statistics are for the surrounding area including the reservation.

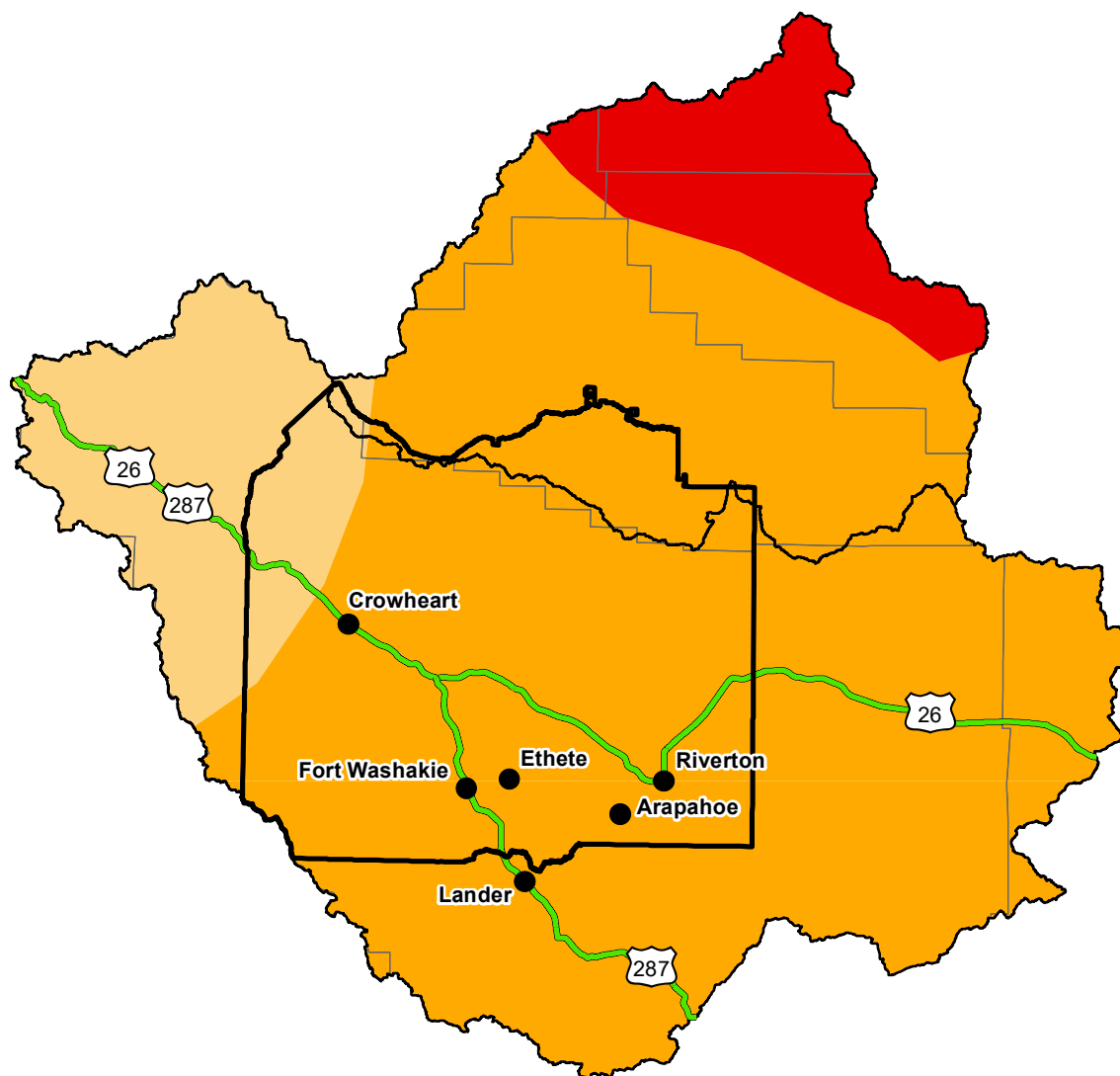
### Intensity:

 None	 D2 Severe Drought
 D0 Abnormally Dry	 D3 Extreme Drought
 D1 Moderate Drought	 D4 Exceptional Drought

The Drought Monitor focuses on broad-scale conditions. Local conditions may vary. For more information on the Drought Monitor, go to <https://droughtmonitor.unl.edu/About.aspx>

### Author:

Richard Tinker  
CPC/NOAA/NWS/NCEP



<http://droughtmonitor.unl.edu/>