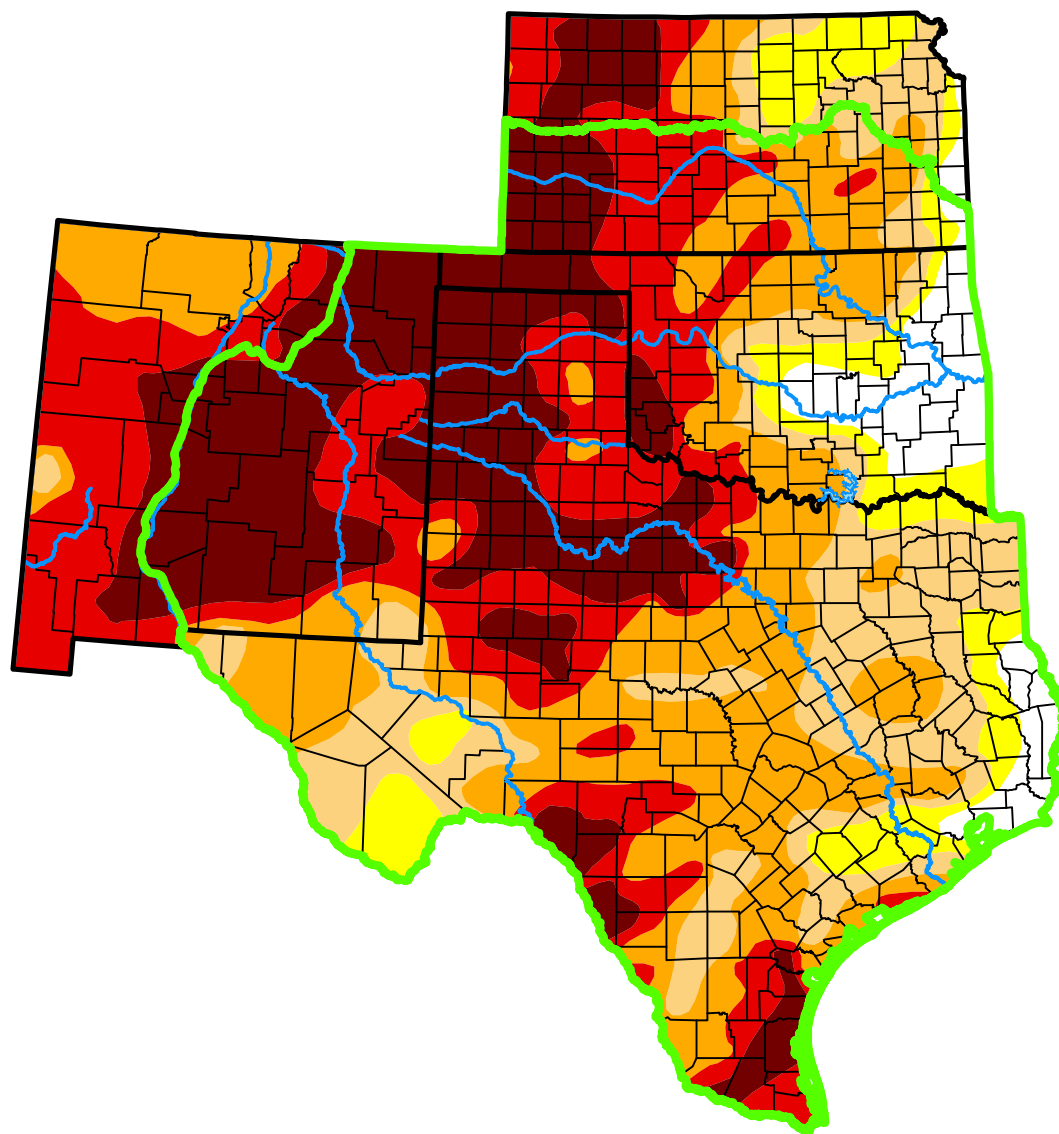


*U.S. Drought Monitor*

# Southern Plains DEWS and Surrounding Areas

**May 21, 2013**  
(Released Thursday, May. 23, 2013)  
Valid 8 a.m. EDT



*Intensity:*



*The Drought Monitor focuses on broad-scale conditions. Local conditions may vary. For more information on the Drought Monitor, go to <https://droughtmonitor.unl.edu/About.aspx>*

*Author:*

Brad Rippey  
U.S. Department of Agriculture



**droughtmonitor.unl.edu**