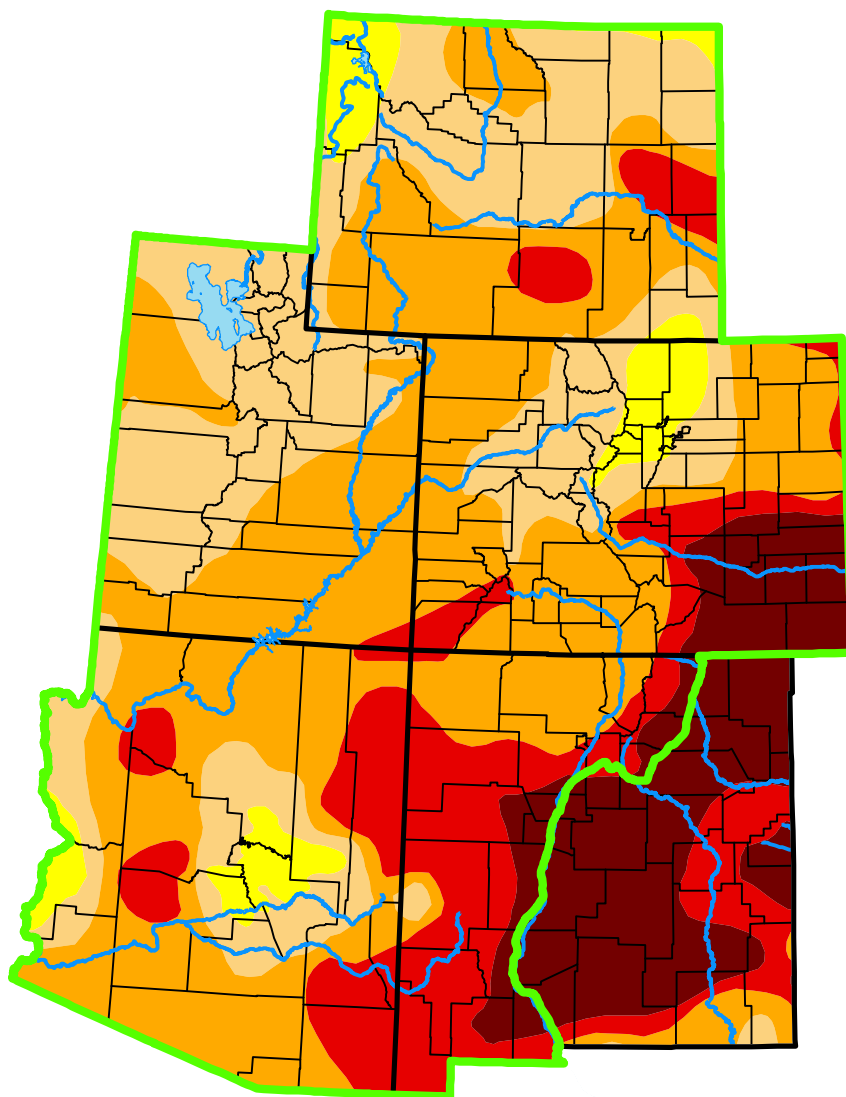


U.S. Drought Monitor

Intermountain West DEWS and Surrounding Areas

June 11, 2013
(Released Thursday, Jun. 13, 2013)
Valid 8 a.m. EDT



Intensity:



The Drought Monitor focuses on broad-scale conditions. Local conditions may vary. For more information on the Drought Monitor, go to <https://droughtmonitor.unl.edu/About.aspx>

Author:

David Simeral
Western Regional Climate Center



droughtmonitor.unl.edu