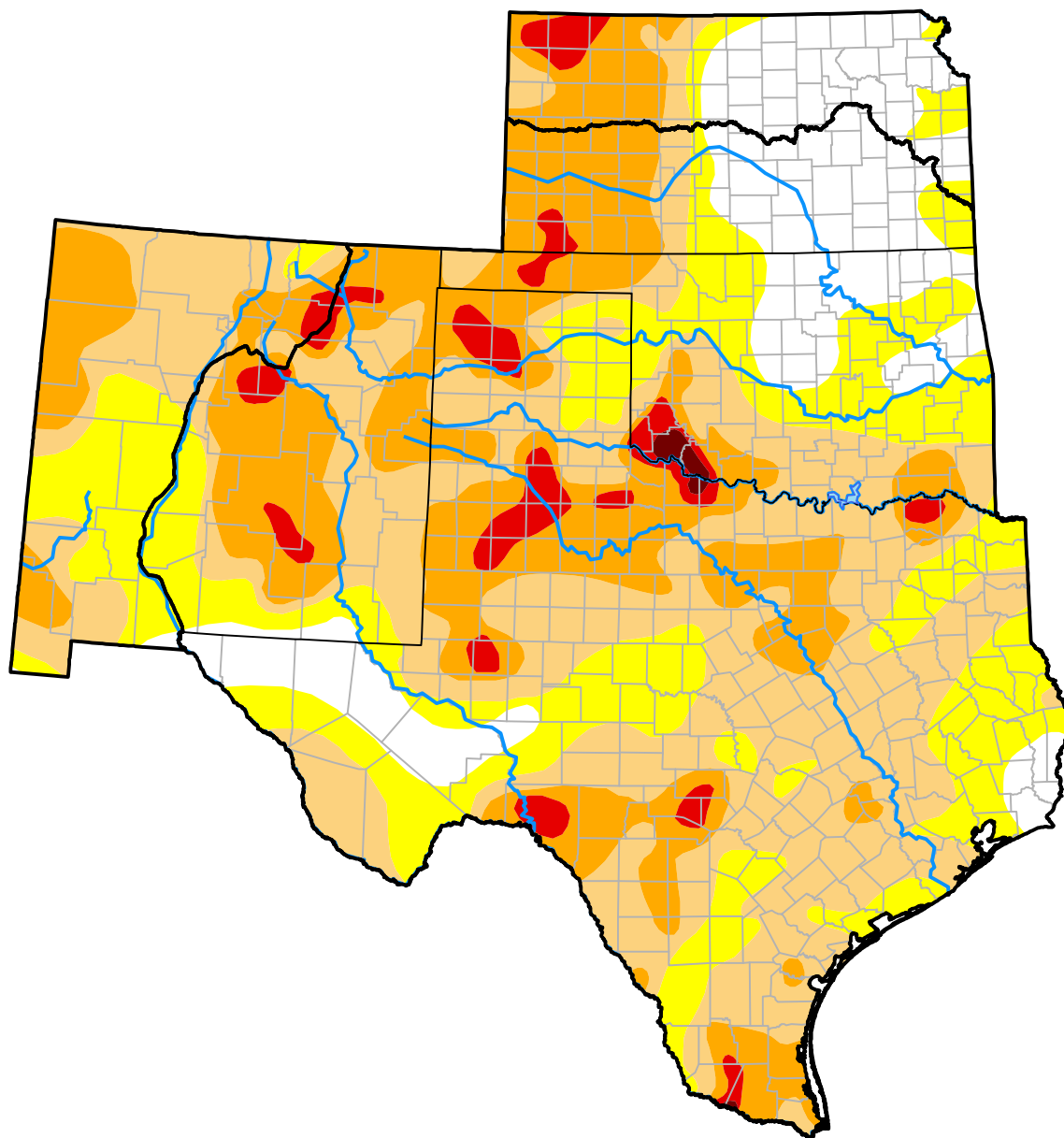


U.S. Drought Monitor

Southern Plains RDEWS

October 8, 2013
(Released Thursday, Oct. 10, 2013)
 Valid 8 a.m. EDT



Drought Conditions (Percent Area)

	None	D0	D1	D2	D3	D4
Current	7.75	24.82	39.83	23.45	3.85	0.29
Last Week <i>10-03-2013</i>	7.61	24.66	40.40	23.42	3.61	0.29
3 Months Ago <i>07-11-2013</i>	4.09	8.23	12.00	26.69	29.28	19.71
Start of Calendar Year <i>01-03-2013</i>	1.76	6.09	13.82	34.96	30.48	12.88
Start of Water Year <i>10-03-2013</i>	7.61	24.66	40.40	23.42	3.61	0.29
One Year Ago <i>10-11-2012</i>	9.58	10.57	29.53	25.51	18.09	6.73

Intensity:

None	D2 Severe Drought
D0 Abnormally Dry	D3 Extreme Drought
D1 Moderate Drought	D4 Exceptional Drought

The Drought Monitor focuses on broad-scale conditions. Local conditions may vary. For more information on the Drought Monitor, go to <https://droughtmonitor.unl.edu/About.aspx>

Author:

Richard Tinker
 CPC/NOAA/NWS/NCEP



droughtmonitor.unl.edu