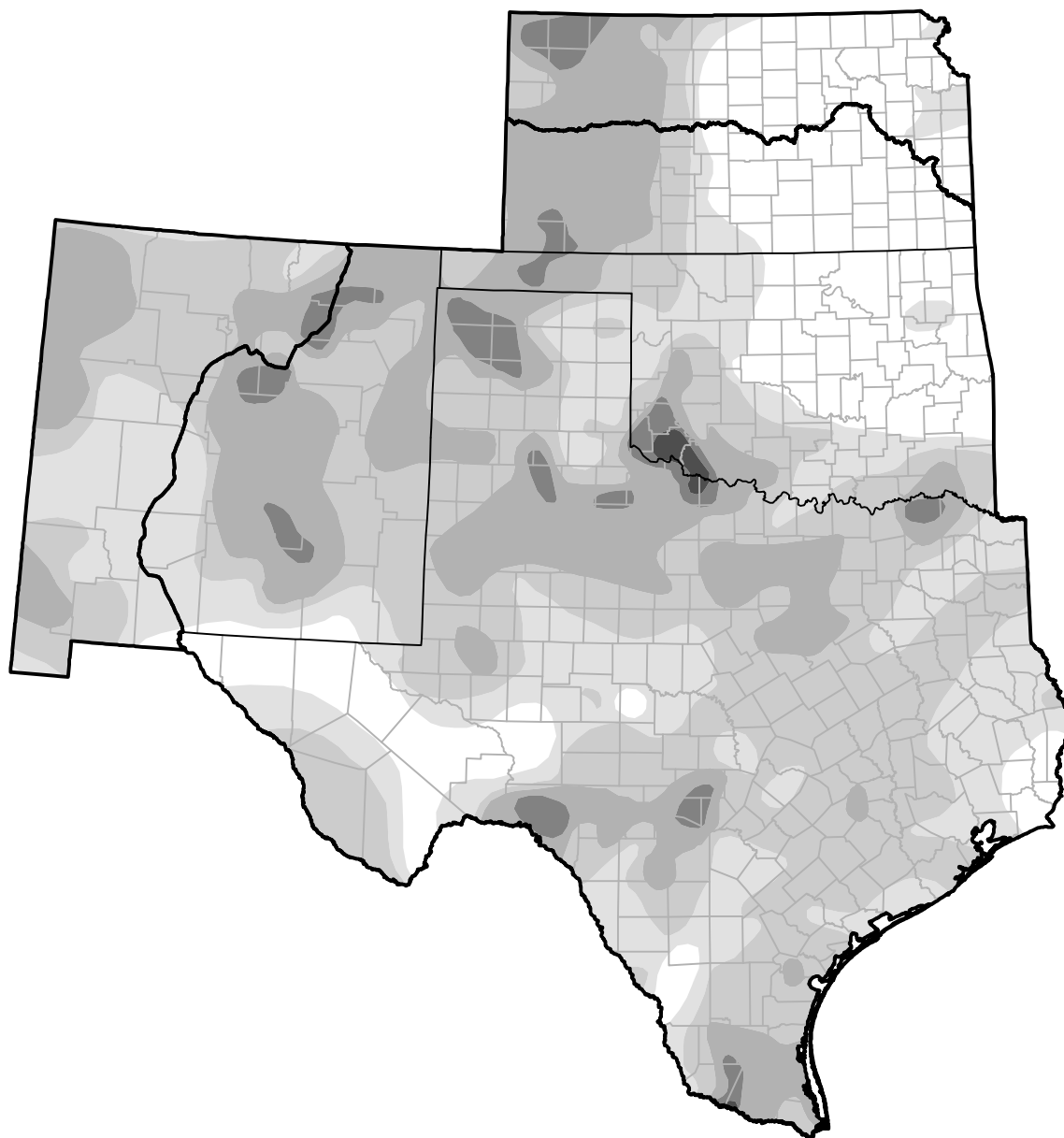


# U.S. Drought Monitor

## Southern Plains RDEWS

**October 15, 2013**  
*(Released Thursday, Oct. 17, 2013)*  
 Valid 8 a.m. EDT



*Drought Conditions (Percent Area)*

	None	D0-D4	D1-D4	D2-D4	D3-D4	D4
<b>Current</b>	12.18	87.82	63.39	24.93	3.43	0.29
<b>Last Week</b> <i>10-10-2013</i>	7.75	92.25	67.43	27.60	4.14	0.29
<b>3 Months Ago</b> <i>07-18-2013</i>	3.99	96.01	90.47	73.10	46.97	17.78
<b>Start of Calendar Year</b> <i>01-03-2013</i>	1.76	98.24	92.14	78.32	43.36	12.88
<b>Start of Water Year</b> <i>10-03-2013</i>	7.61	92.39	67.73	27.33	3.90	0.29
<b>One Year Ago</b> <i>10-18-2012</i>	9.91	90.09	78.11	51.08	22.45	6.19

### Intensity:

 None	 D2 Severe Drought
 D0 Abnormally Dry	 D3 Extreme Drought
 D1 Moderate Drought	 D4 Exceptional Drought

*The Drought Monitor focuses on broad-scale conditions. Local conditions may vary. For more information on the Drought Monitor, go to <https://droughtmonitor.unl.edu/About.aspx>*

### Author:

Richard Tinker  
 CPC/NOAA/NWS/NCEP



**droughtmonitor.unl.edu**