

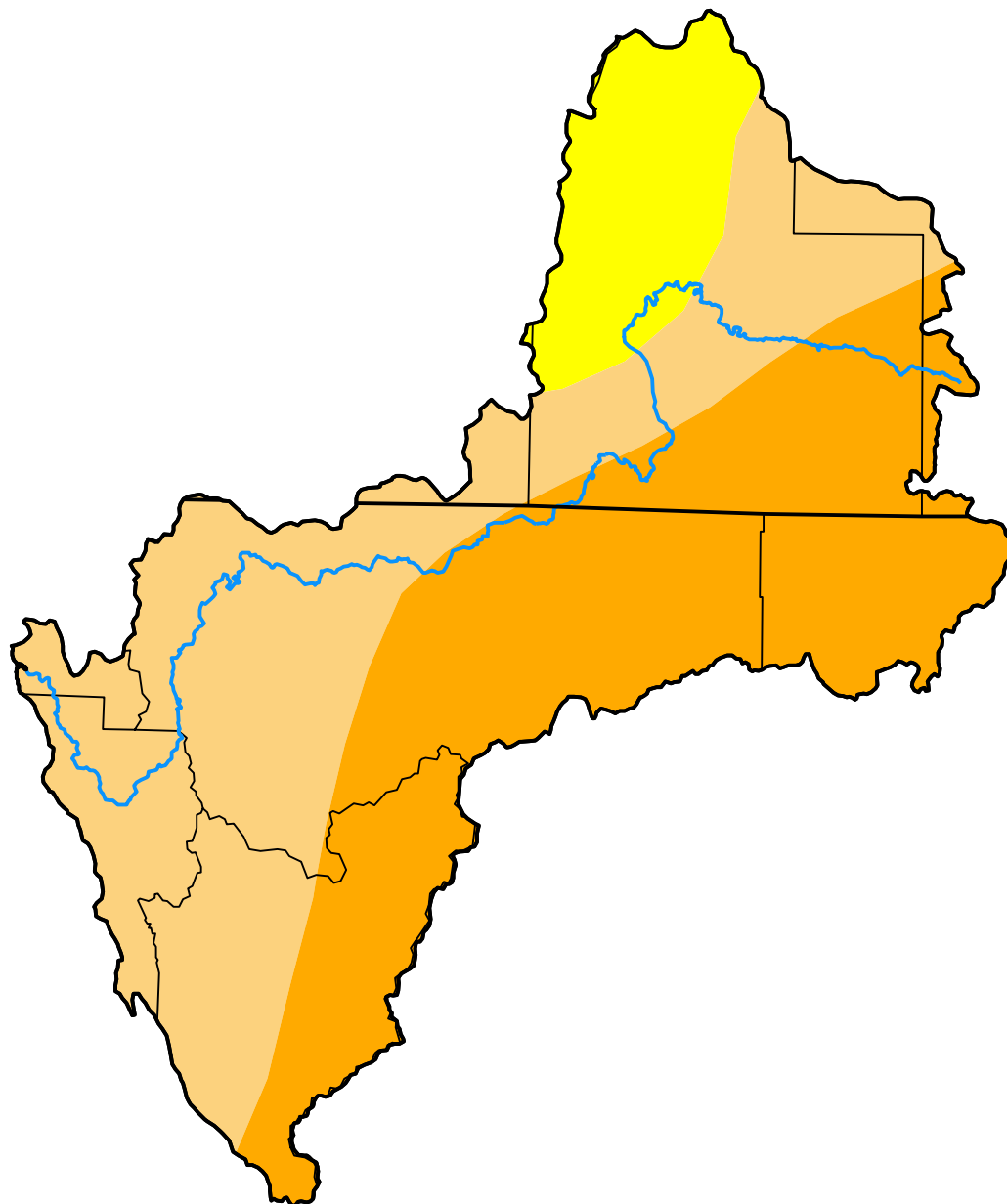
# U.S. Drought Monitor Klamath River Basin

**October 22, 2013**  
(Released Thursday, Oct. 24, 2013)

Valid 8 a.m. EDT

*Drought Conditions (Percent Area)*

	None	D0-D4	D1-D4	D2-D4	D3-D4	D4
<b>Current</b>	0.00	100.00	88.84	44.88	0.00	0.00
<b>Last Week</b> <i>10-15-2013</i>	0.00	100.00	89.01	44.88	0.00	0.00
<b>3 Months Ago</b> <i>07-23-2013</i>	0.00	100.00	100.00	88.33	0.00	0.00
<b>Start of Calendar Year</b> <i>01-01-2013</i>	60.82	39.18	13.13	2.52	0.00	0.00
<b>Start of Water Year</b> <i>10-01-2013</i>	0.00	100.00	89.13	44.88	0.00	0.00
<b>One Year Ago</b> <i>10-23-2012</i>	18.68	81.32	27.11	6.38	0.00	0.00



***Intensity:***

- None
- D0 Abnormally Dry
- D1 Moderate Drought
- D2 Severe Drought
- D3 Extreme Drought
- D4 Exceptional Drought

*The Drought Monitor focuses on broad-scale conditions. Local conditions may vary. For more information on the Drought Monitor, go to <https://droughtmonitor.unl.edu/About.aspx>*

***Author:***

Brian Fuchs  
National Drought Mitigation Center

