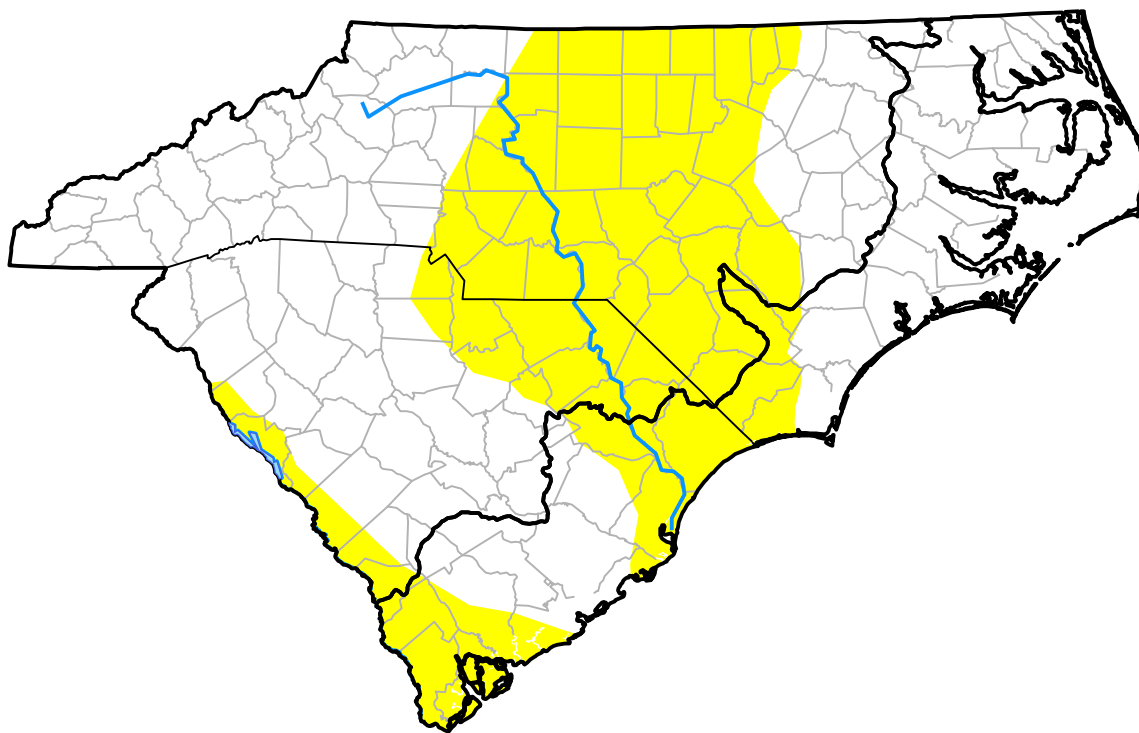


# U.S. Drought Monitor

## Coastal Carolinas RDEWS

**November 5, 2013**  
 (Released Thursday, Nov. 7, 2013)  
 Valid 7 a.m. EST



*Drought Conditions (Percent Area)*

	None	D0	D1	D2	D3	D4
<b>Current</b>	72.87	27.13	0.00	0.00	0.00	0.00
<b>Last Week</b> <i>10-31-2013</i>	72.87	27.13	0.00	0.00	0.00	0.00
<b>3 Months Ago</b> <i>08-08-2013</i>	100.00	0.00	0.00	0.00	0.00	0.00
<b>Start of Calendar Year</b> <i>01-03-2013</i>	57.17	27.60	10.07	5.17	0.00	0.00
<b>Start of Water Year</b> <i>10-03-2013</i>	49.04	50.96	0.00	0.00	0.00	0.00
<b>One Year Ago</b> <i>11-08-2012</i>	50.41	45.01	4.58	0.00	0.00	0.00

***Intensity:***



*The Drought Monitor focuses on broad-scale conditions. Local conditions may vary. For more information on the Drought Monitor, go to <https://droughtmonitor.unl.edu/About.aspx>*

***Author:***

David Simeral  
 Western Regional Climate Center

