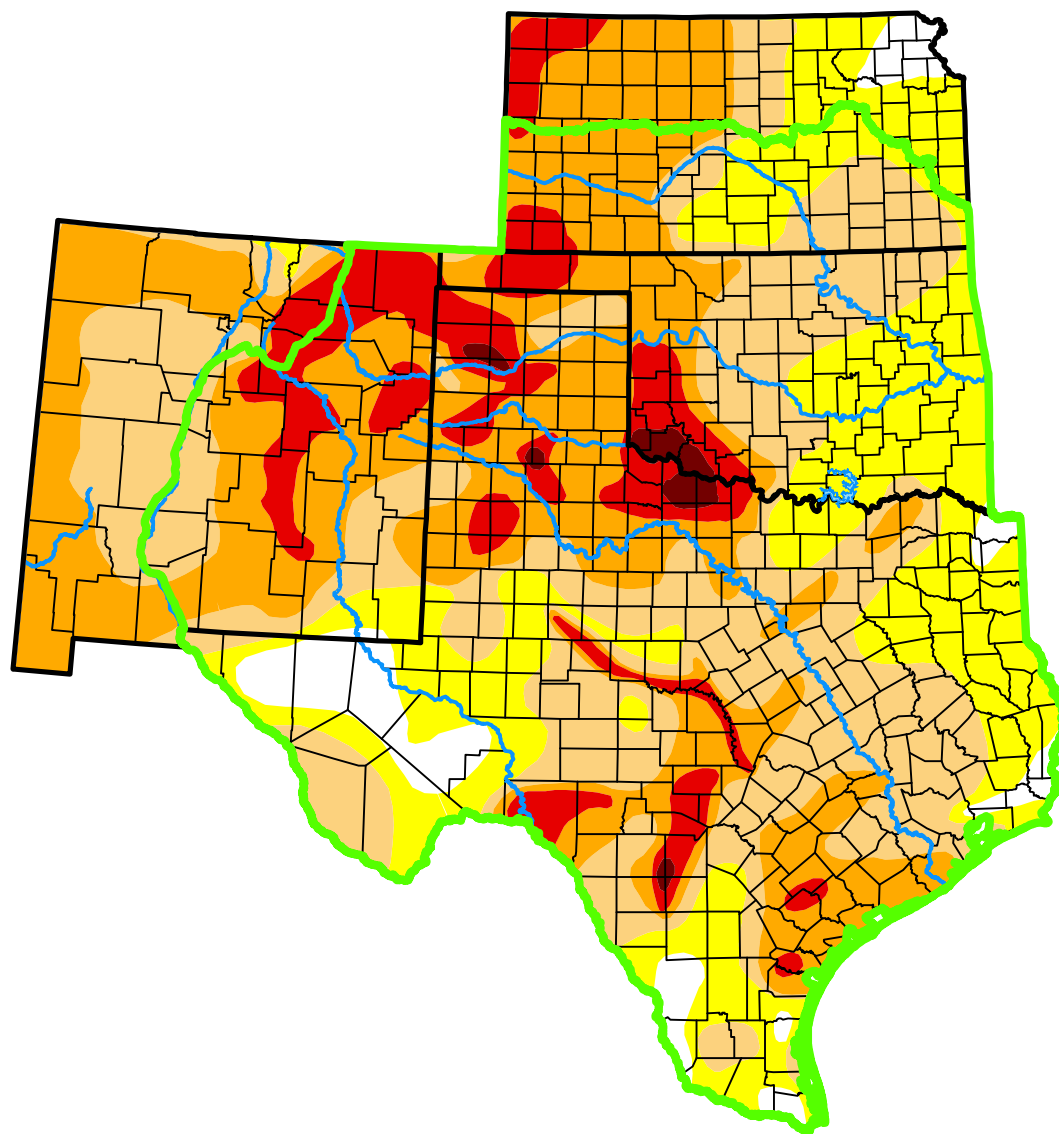


U.S. Drought Monitor

Southern Plains DEWS and Surrounding Areas

February 25, 2014
(Released Thursday, Feb. 27, 2014)
Valid 7 a.m. EST



Intensity:



The Drought Monitor focuses on broad-scale conditions. Local conditions may vary. For more information on the Drought Monitor, go to <https://droughtmonitor.unl.edu/About.aspx>

Author:

Brad Rippey
U.S. Department of Agriculture



droughtmonitor.unl.edu