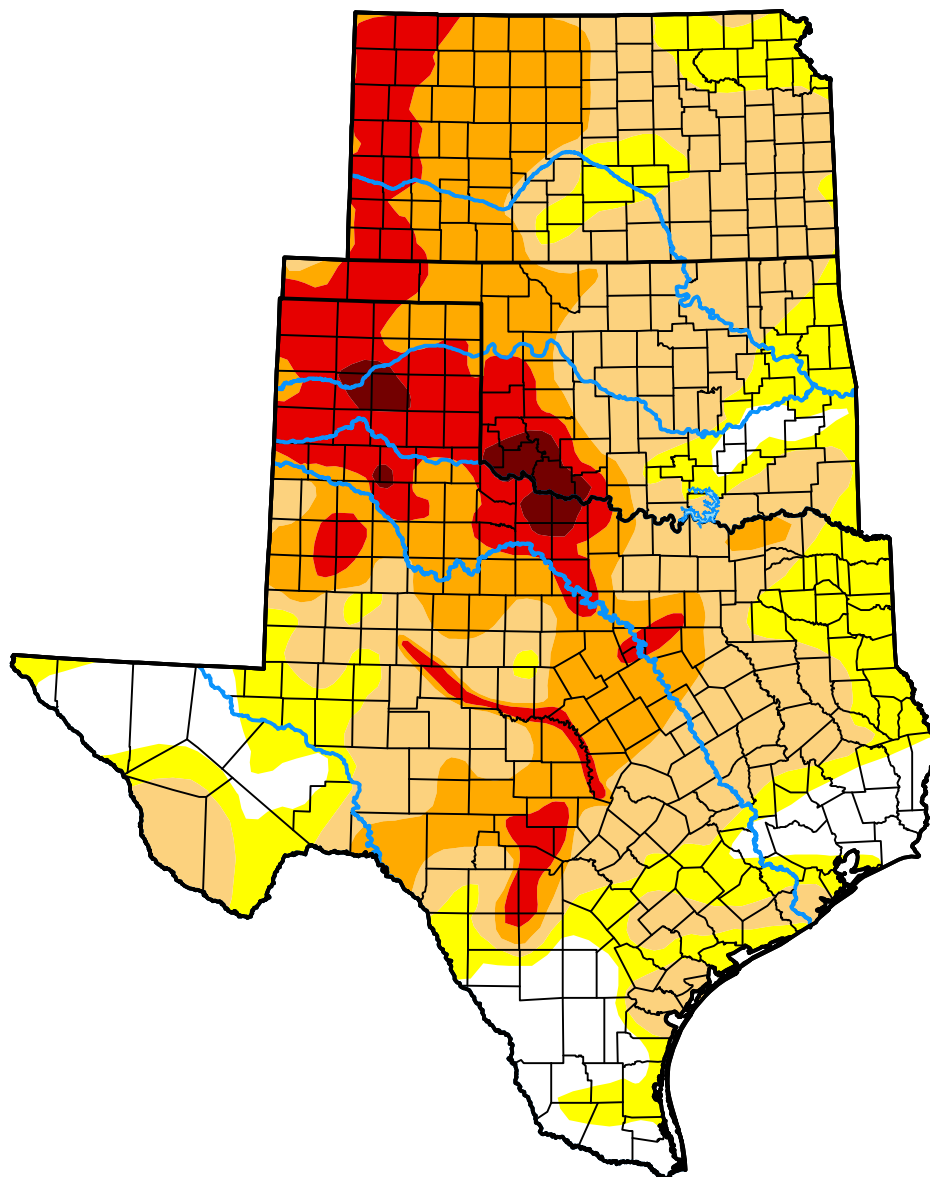


U.S. Drought Monitor
**USDA Southern Plains
Climate Hub**

March 18, 2014
(Released Thursday, Mar. 20, 2014)
Valid 8 a.m. EDT



Intensity:



The Drought Monitor focuses on broad-scale conditions. Local conditions may vary. For more information on the Drought Monitor, go to <https://droughtmonitor.unl.edu/About.aspx>

Author:

Eric Luebehusen
U.S. Department of Agriculture



droughtmonitor.unl.edu