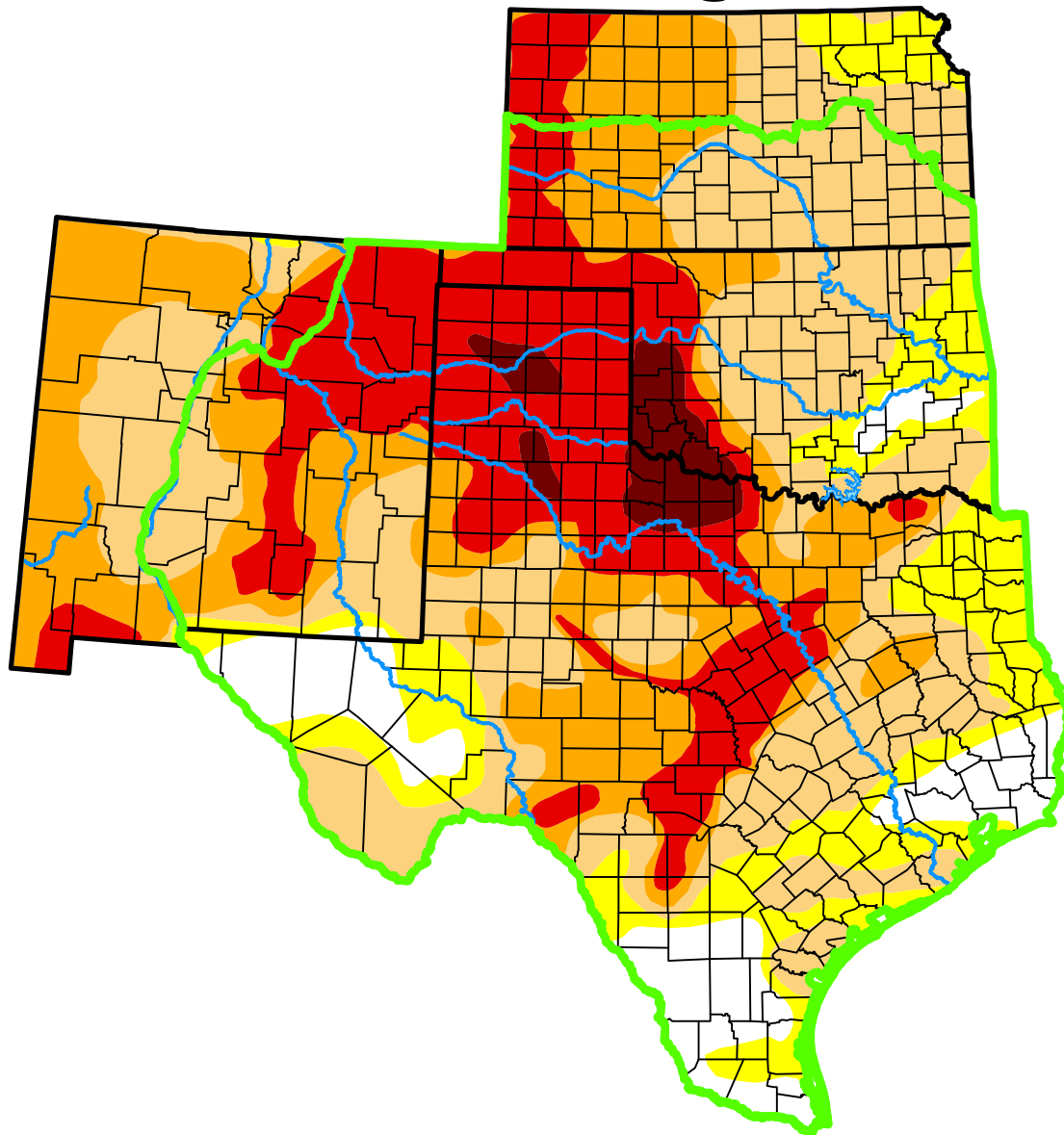


U.S. Drought Monitor

Southern Plains DEWS and Surrounding Areas



March 25, 2014

(Released Thursday, Mar. 27, 2014)

Valid 8 a.m. EDT

Drought Conditions (Percent Area)

	None	D0-D4	D1-D4	D2-D4	D3-D4	D4
Current	9.65	90.35	76.21	43.66	25.68	3.46
Last Week <i>03-18-2014</i>	9.96	90.04	72.48	38.02	17.27	1.49
3 Months Ago <i>12-24-2013</i>	26.06	73.94	50.22	26.78	5.90	0.86
Start of Calendar Year <i>12-31-2013</i>	26.17	73.83	48.98	26.00	5.30	0.86
Start of Water Year <i>10-01-2013</i>	12.19	87.81	65.16	28.11	4.07	0.30
One Year Ago <i>03-26-2013</i>	0.91	99.09	91.90	73.42	43.92	10.33

(Statistics for area highlighted in green)

Intensity:

None	D2 Severe Drought
D0 Abnormally Dry	D3 Extreme Drought
D1 Moderate Drought	D4 Exceptional Drought

The Drought Monitor focuses on broad-scale conditions. Local conditions may vary. For more information on the Drought Monitor, go to <https://droughtmonitor.unl.edu/About.aspx>

Author:

David Simeral
Western Regional Climate Center



droughtmonitor.unl.edu