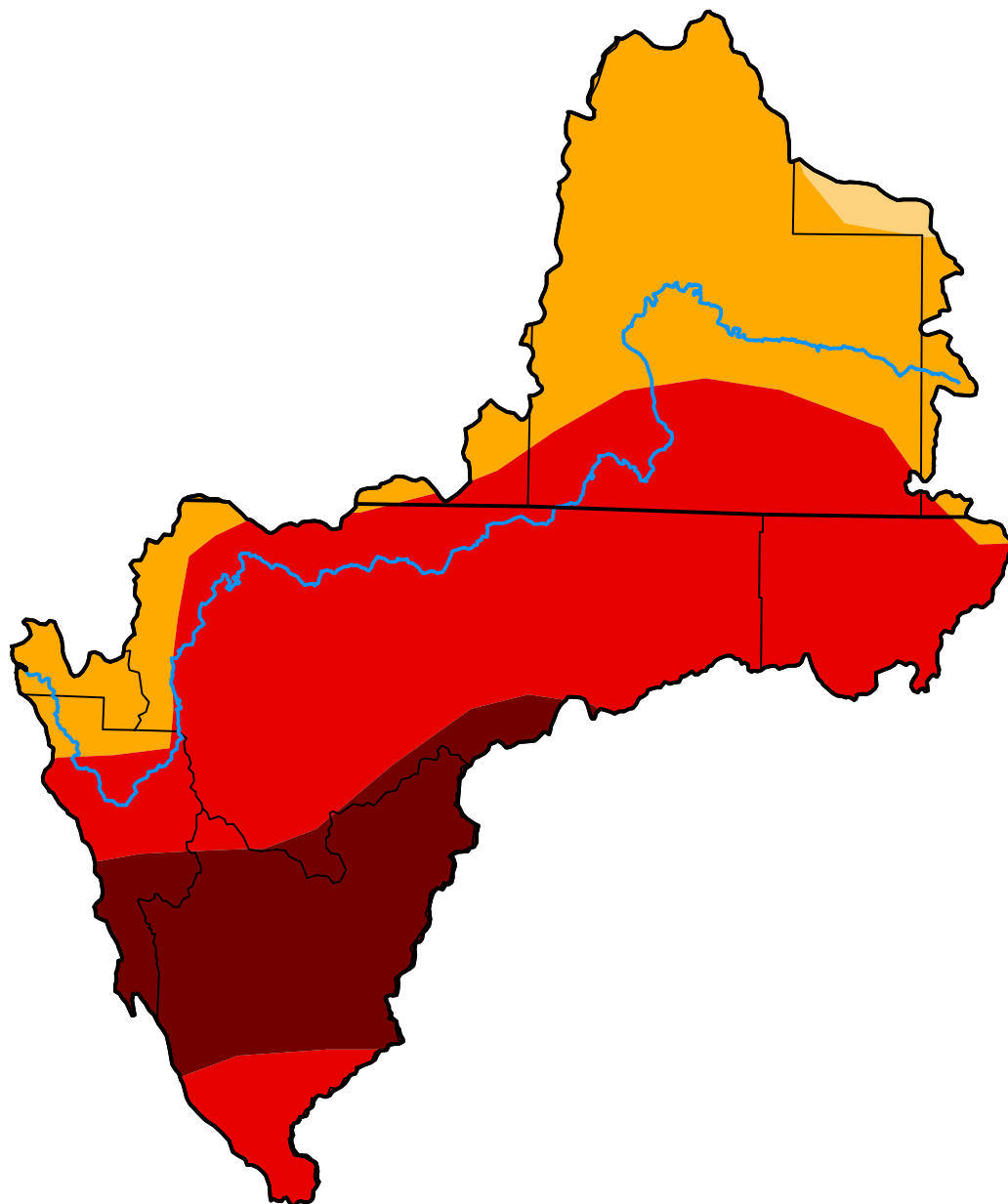


# U.S. Drought Monitor Klamath River Basin

**June 17, 2014**  
(Released Thursday, Jun. 19, 2014)  
Valid 8 a.m. EDT



*Drought Conditions (Percent Area)*

	None	D0-D4	D1-D4	D2-D4	D3-D4	D4
<b>Current</b>	0.00	100.00	100.00	99.07	68.40	16.63
<b>Last Week</b> <i>06-10-2014</i>	0.00	100.00	100.00	99.16	68.40	0.00
<b>3 Months Ago</b> <i>03-18-2014</i>	0.00	100.00	100.00	97.01	21.03	0.00
<b>Start of Calendar Year</b> <i>12-31-2013</i>	0.00	100.00	100.00	73.15	0.00	0.00
<b>Start of Water Year</b> <i>10-01-2013</i>	0.00	100.00	89.13	44.88	0.00	0.00
<b>One Year Ago</b> <i>06-18-2013</i>	0.00	100.00	100.00	85.54	0.00	0.00

**Intensity:**



*The Drought Monitor focuses on broad-scale conditions. Local conditions may vary. For more information on the Drought Monitor, go to <https://droughtmonitor.unl.edu/About.aspx>*

**Author:**

Eric Luebehusen  
U.S. Department of Agriculture



**droughtmonitor.unl.edu**