

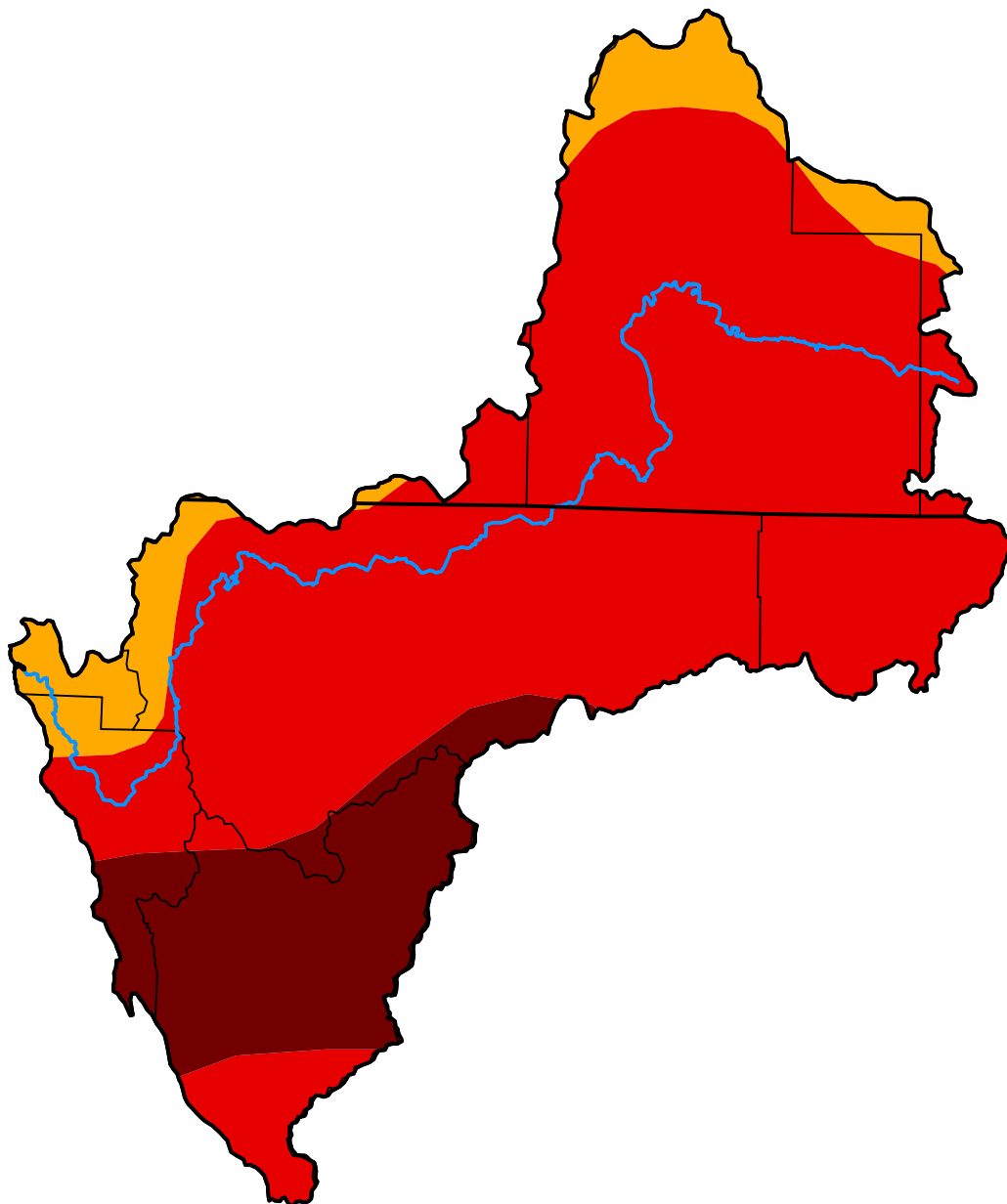
U.S. Drought Monitor Klamath River Basin

July 8, 2014
(Released Thursday, Jul. 10, 2014)

Valid 8 a.m. EDT

Drought Conditions (Percent Area)

	None	D0	D1	D2	D3	D4
Current	0.00	0.00	0.00	9.14	74.23	16.63
Last Week <i>07-01-2014</i>	0.00	0.00	0.00	9.14	74.23	16.63
3 Months Ago <i>04-08-2014</i>	0.00	0.00	2.99	76.12	20.88	0.00
Start of Calendar Year <i>12-31-2013</i>	0.00	0.00	26.85	73.15	0.00	0.00
Start of Water Year <i>10-01-2013</i>	0.00	10.87	44.25	44.88	0.00	0.00
One Year Ago <i>07-09-2013</i>	0.00	0.00	11.67	88.33	0.00	0.00



Intensity:

- None
- D0 Abnormally Dry
- D1 Moderate Drought
- D2 Severe Drought
- D3 Extreme Drought
- D4 Exceptional Drought

The Drought Monitor focuses on broad-scale conditions. Local conditions may vary. For more information on the Drought Monitor, go to <https://droughtmonitor.unl.edu/About.aspx>

Author:

Anthony Artusa
NOAA/NWS/NCEP/CPC



droughtmonitor.unl.edu