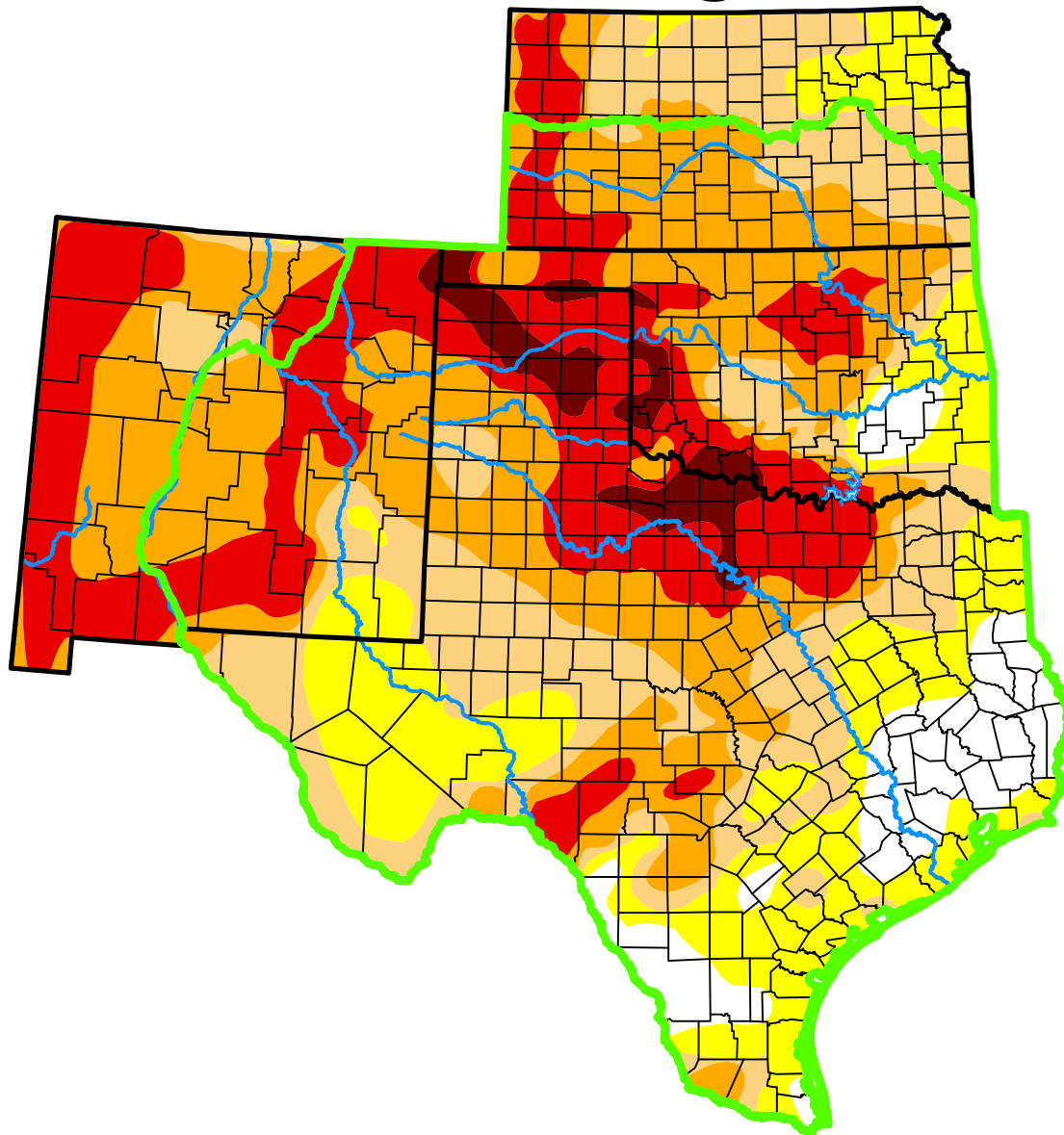


U.S. Drought Monitor

Southern Plains DEWS and Surrounding Areas



July 8, 2014

(Released Thursday, Jul. 10, 2014)

Valid 8 a.m. EDT

Drought Conditions (Percent Area)

	None	D0-D4	D1-D4	D2-D4	D3-D4	D4
Current	8.38	91.62	72.25	50.92	22.33	3.90
Last Week <i>07-01-2014</i>	8.62	91.38	71.91	51.31	22.45	4.04
3 Months Ago <i>04-08-2014</i>	11.67	88.33	73.75	49.77	27.64	6.42
Start of Calendar Year <i>12-31-2013</i>	26.17	73.83	48.98	26.00	5.30	0.86
Start of Water Year <i>10-01-2013</i>	12.19	87.81	65.16	28.11	4.07	0.30
One Year Ago <i>07-09-2013</i>	4.69	95.31	86.51	72.40	43.58	20.28

(Statistics for area highlighted in green)

Intensity:

None	D2 Severe Drought
D0 Abnormally Dry	D3 Extreme Drought
D1 Moderate Drought	D4 Exceptional Drought

The Drought Monitor focuses on broad-scale conditions. Local conditions may vary. For more information on the Drought Monitor, go to <https://droughtmonitor.unl.edu/About.aspx>

Author:

Anthony Artusa
NOAA/NWS/NCEP/CPC



droughtmonitor.unl.edu