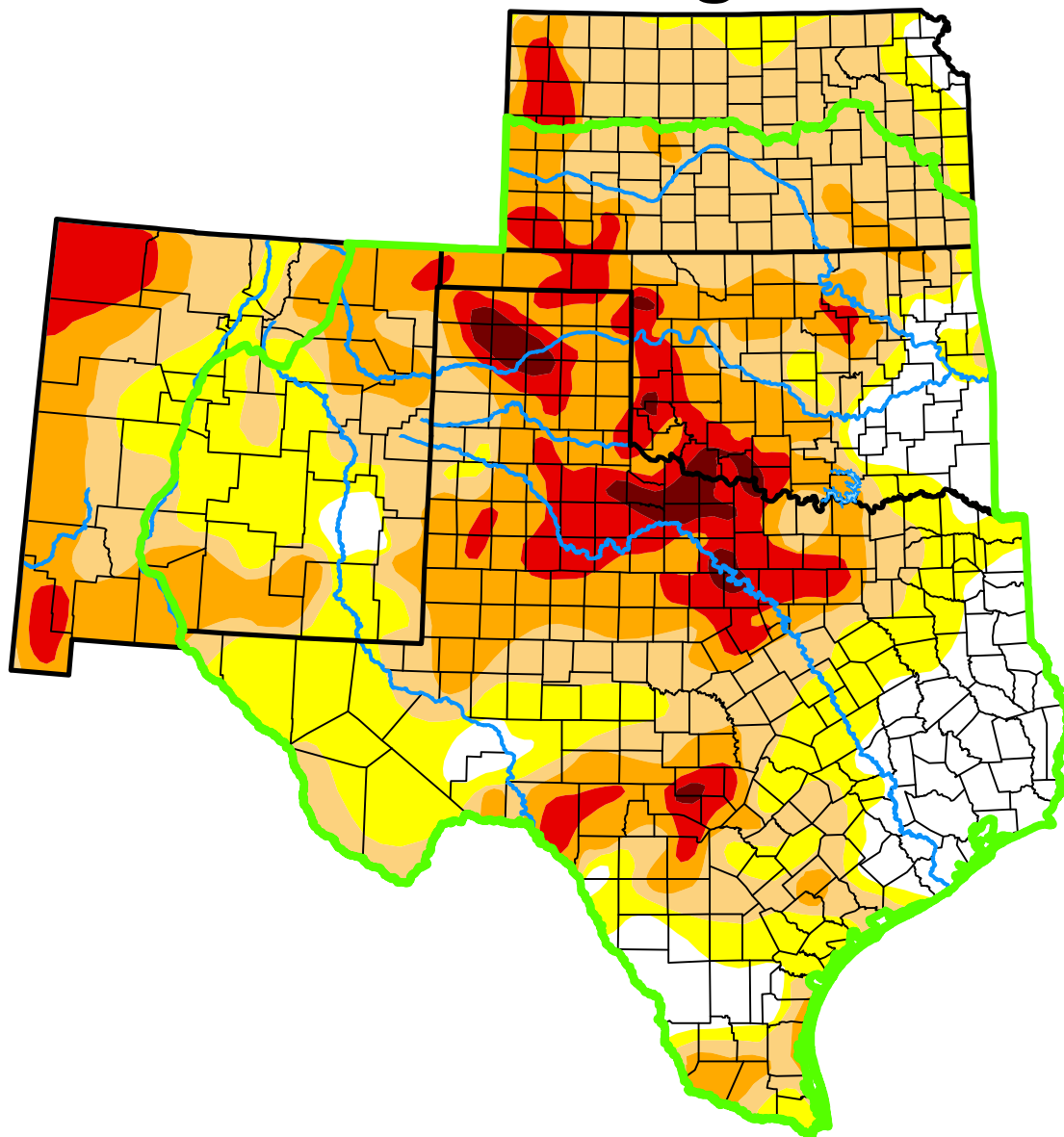


U.S. Drought Monitor

Southern Plains DEWS and Surrounding Areas



August 12, 2014

(Released Thursday, Aug. 14, 2014)

Valid 8 a.m. EDT

Drought Conditions (Percent Area)

	None	D0	D1	D2	D3	D4
Current	14.05	22.13	27.85	24.29	9.74	1.94
Last Week <i>08-05-2014</i>	12.98	20.60	29.11	25.38	9.79	2.13
3 Months Ago <i>05-13-2014</i>	6.69	14.08	14.26	20.30	25.59	19.08
Start of Calendar Year <i>12-31-2013</i>	26.17	24.85	22.98	20.70	4.44	0.86
Start of Water Year <i>10-01-2013</i>	12.19	22.65	37.05	24.04	3.76	0.30
One Year Ago <i>08-13-2013</i>	13.63	9.65	16.29	32.06	20.10	8.27

(Statistics for area highlighted in green)

Intensity:

None	D2 Severe Drought
D0 Abnormally Dry	D3 Extreme Drought
D1 Moderate Drought	D4 Exceptional Drought

The Drought Monitor focuses on broad-scale conditions. Local conditions may vary. For more information on the Drought Monitor, go to <https://droughtmonitor.unl.edu/About.aspx>

Author:

Richard Tinker
CPC/NOAA/NWS/NCEP



droughtmonitor.unl.edu