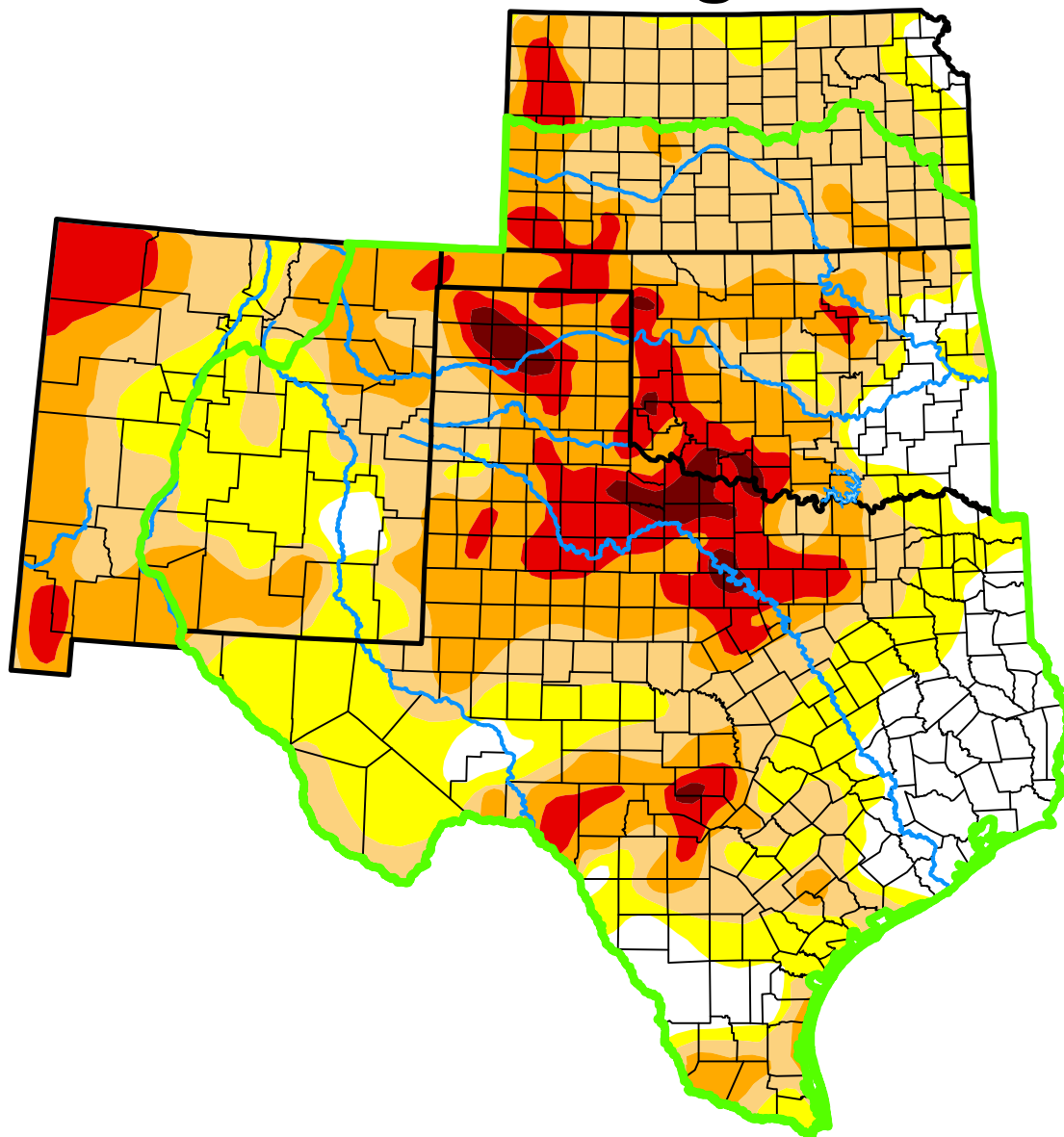


U.S. Drought Monitor

Southern Plains DEWS and Surrounding Areas



August 12, 2014

(Released Thursday, Aug. 14, 2014)

Valid 8 a.m. EDT

Drought Conditions (Percent Area)

	None	D0-D4	D1-D4	D2-D4	D3-D4	D4
Current	14.05	85.95	63.82	35.97	11.68	1.94
Last Week <i>08-05-2014</i>	12.98	87.02	66.41	37.30	11.92	2.13
3 Months Ago <i>05-13-2014</i>	6.69	93.31	79.23	64.96	44.66	19.08
Start of Calendar Year <i>12-31-2013</i>	26.17	73.83	48.98	26.00	5.30	0.86
Start of Water Year <i>10-01-2013</i>	12.19	87.81	65.16	28.11	4.07	0.30
One Year Ago <i>08-13-2013</i>	13.63	86.37	76.72	60.43	28.37	8.27

(Statistics for area highlighted in green)

Intensity:

None	D2 Severe Drought
D0 Abnormally Dry	D3 Extreme Drought
D1 Moderate Drought	D4 Exceptional Drought

The Drought Monitor focuses on broad-scale conditions. Local conditions may vary. For more information on the Drought Monitor, go to <https://droughtmonitor.unl.edu/About.aspx>

Author:

Richard Tinker
CPC/NOAA/NWS/NCEP



droughtmonitor.unl.edu