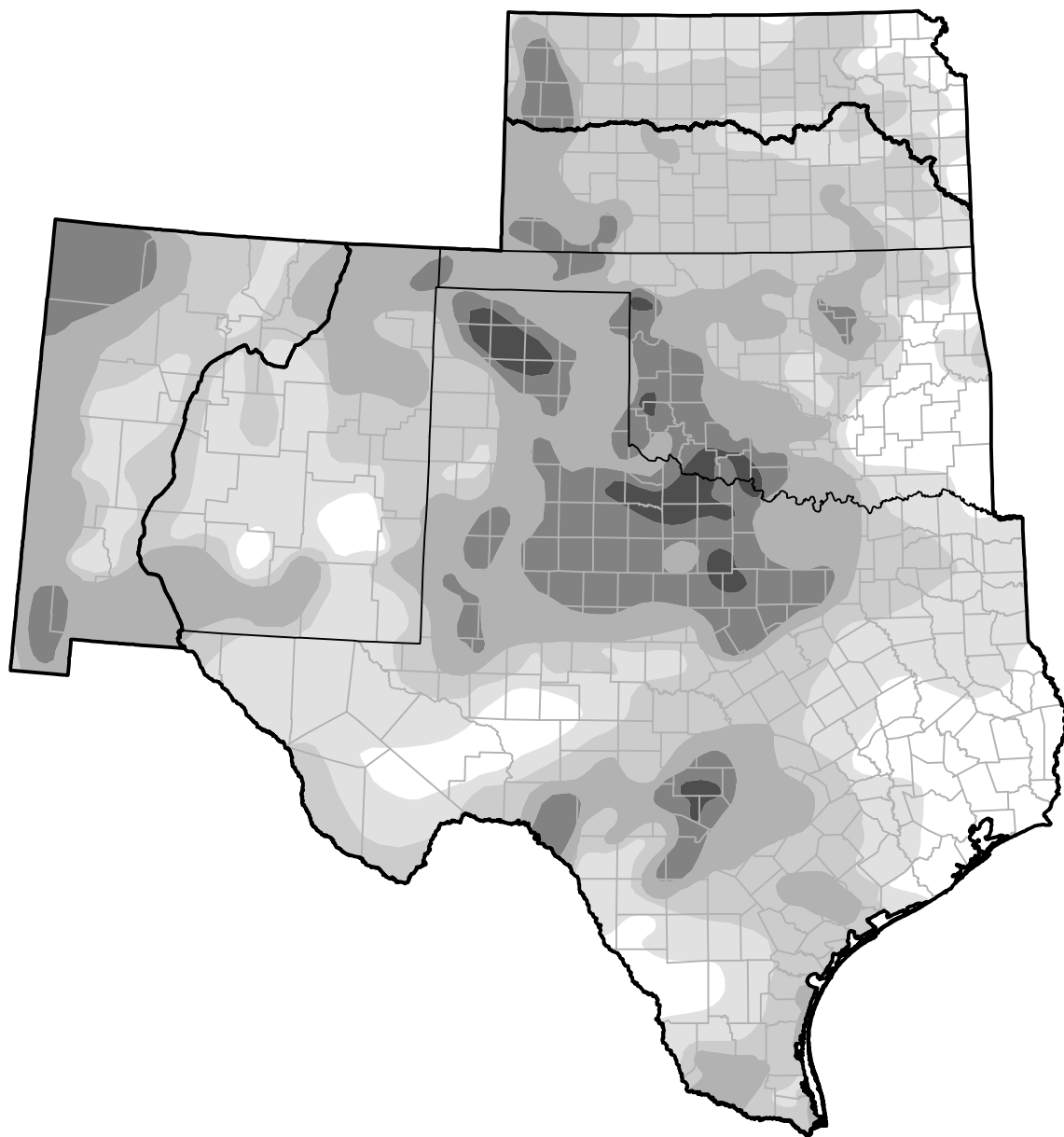


U.S. Drought Monitor

Southern Plains RDEWS

September 2, 2014
(Released Thursday, Sep. 4, 2014)
 Valid 8 a.m. EDT



Drought Conditions (Percent Area)

	None	D0-D4	D1-D4	D2-D4	D3-D4	D4
Current	11.38	88.62	65.14	39.79	13.89	1.95
Last Week <i>08-28-2014</i>	13.46	86.54	65.17	40.32	13.80	1.95
3 Months Ago <i>06-05-2014</i>	5.64	94.36	78.09	61.03	34.52	8.48
Start of Calendar Year <i>01-02-2014</i>	24.42	75.58	51.33	23.89	5.17	0.82
Start of Water Year <i>10-03-2013</i>	7.61	92.39	67.73	27.33	3.90	0.29
One Year Ago <i>09-05-2013</i>	6.51	93.49	83.22	61.30	24.38	4.06

Intensity:

 None	 D2 Severe Drought
 D0 Abnormally Dry	 D3 Extreme Drought
 D1 Moderate Drought	 D4 Exceptional Drought

The Drought Monitor focuses on broad-scale conditions. Local conditions may vary. For more information on the Drought Monitor, go to <https://droughtmonitor.unl.edu/About.aspx>

Author:

David Simeral
 Western Regional Climate Center



droughtmonitor.unl.edu