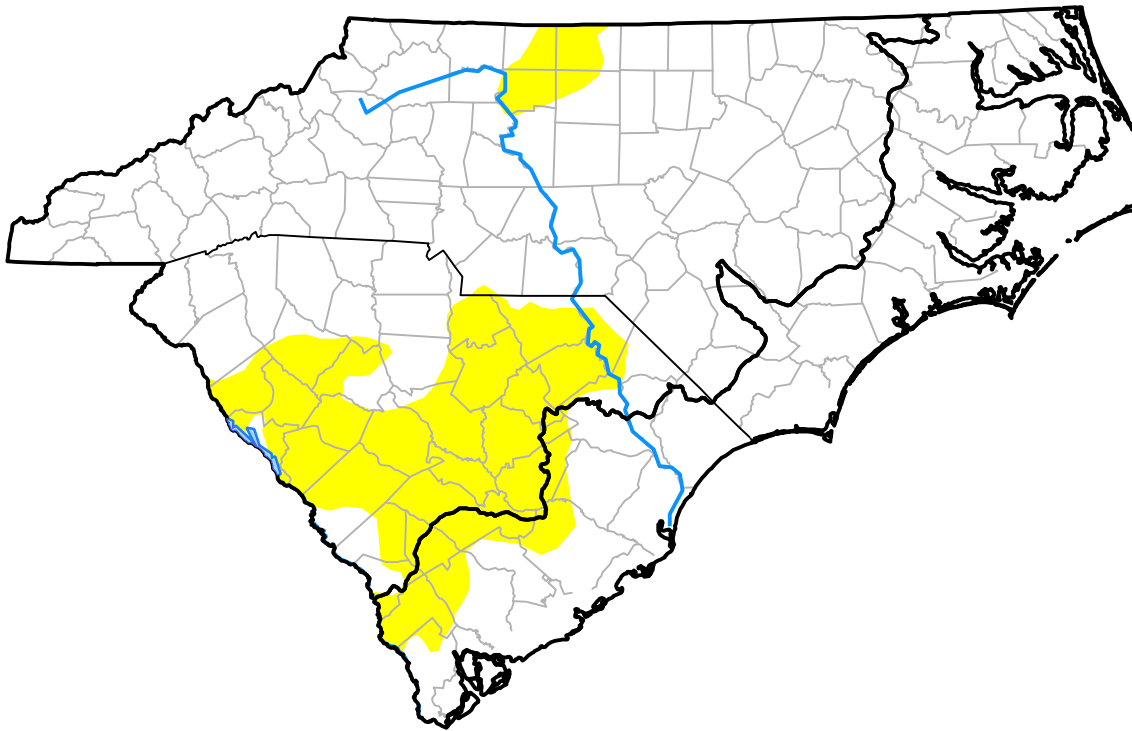


Carolinas RDEWS and Surrounding Areas

(Released Thursday, Sep. 11, 2014)
 10:00 a.m. EDT

Drought Conditions (Percent Area)

	None	D0	D1	D2	D3	D4
Current	80.97	19.03	0.00	0.00	0.00	0.00
Last Week <i>09-04-2014</i>	78.13	21.87	0.00	0.00	0.00	0.00
3 Months Ago <i>06-12-2014</i>	96.83	3.17	0.00	0.00	0.00	0.00
Start of Calendar Year <i>01-02-2014</i>	95.16	4.84	0.00	0.00	0.00	0.00
Start of Water Year <i>10-03-2013</i>	83.82	16.18	0.00	0.00	0.00	0.00
One Year Ago <i>09-12-2013</i>	100.00	0.00	0.00	0.00	0.00	0.00



Intensity:

- None
- D0 Abnormally Dry
- D1 Moderate Drought
- D2 Severe Drought
- D3 Extreme Drought
- D4 Exceptional Drought

The Drought Monitor focuses on broad-scale conditions. Local conditions may vary. For more information on the Drought Monitor, go to <https://droughtmonitor.unl.edu/About.aspx>

Author:

Brian Fuchs
 National Drought Mitigation Center

