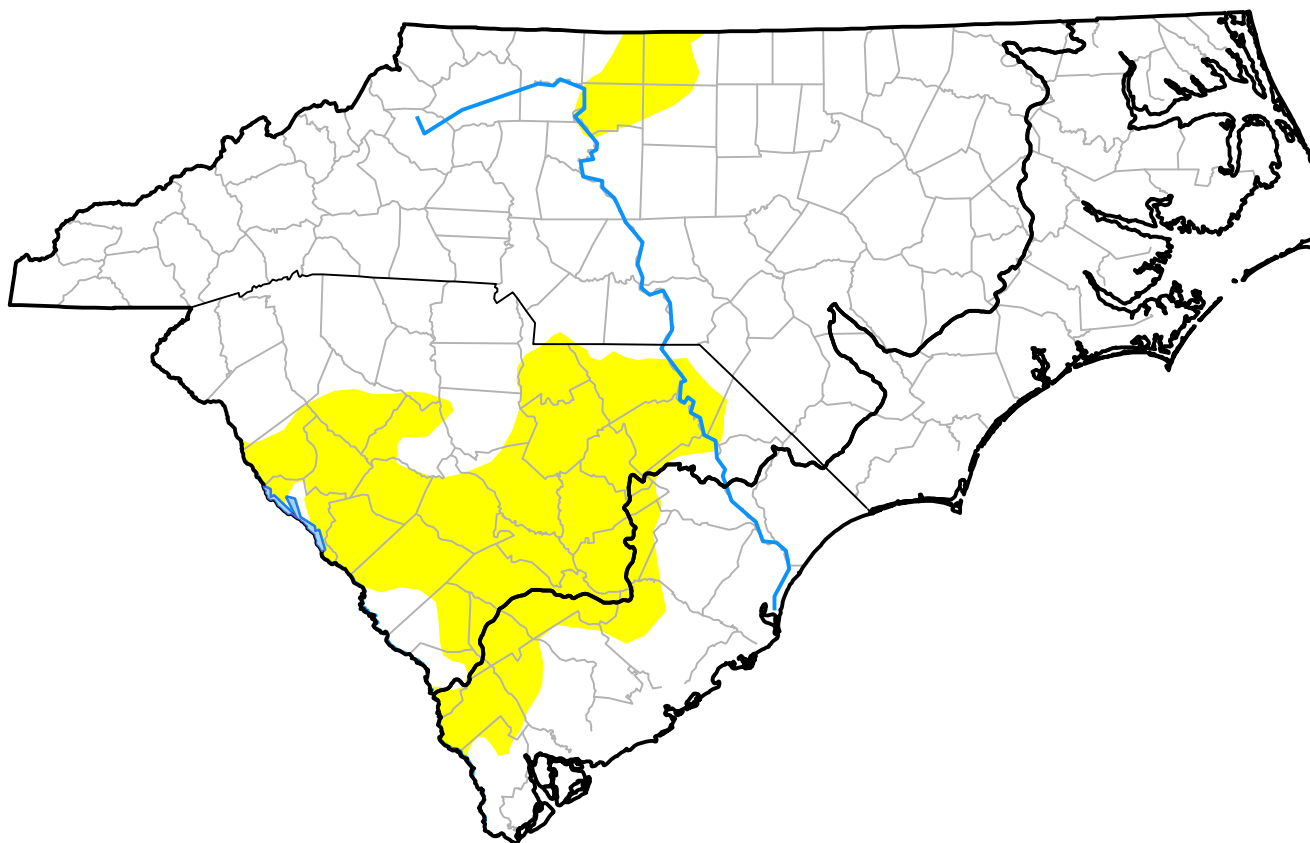


# U.S. Drought Monitor

## Coastal Carolinas RDEWS

**September 9, 2014**  
(Released Thursday, Sep. 11, 2014)  
Valid 8 a.m. EDT



### Intensity:



*The Drought Monitor focuses on broad-scale conditions. Local conditions may vary. For more information on the Drought Monitor, go to <https://droughtmonitor.unl.edu/About.aspx>*

### Author:

Brian Fuchs  
National Drought Mitigation Center



[droughtmonitor.unl.edu](https://droughtmonitor.unl.edu)