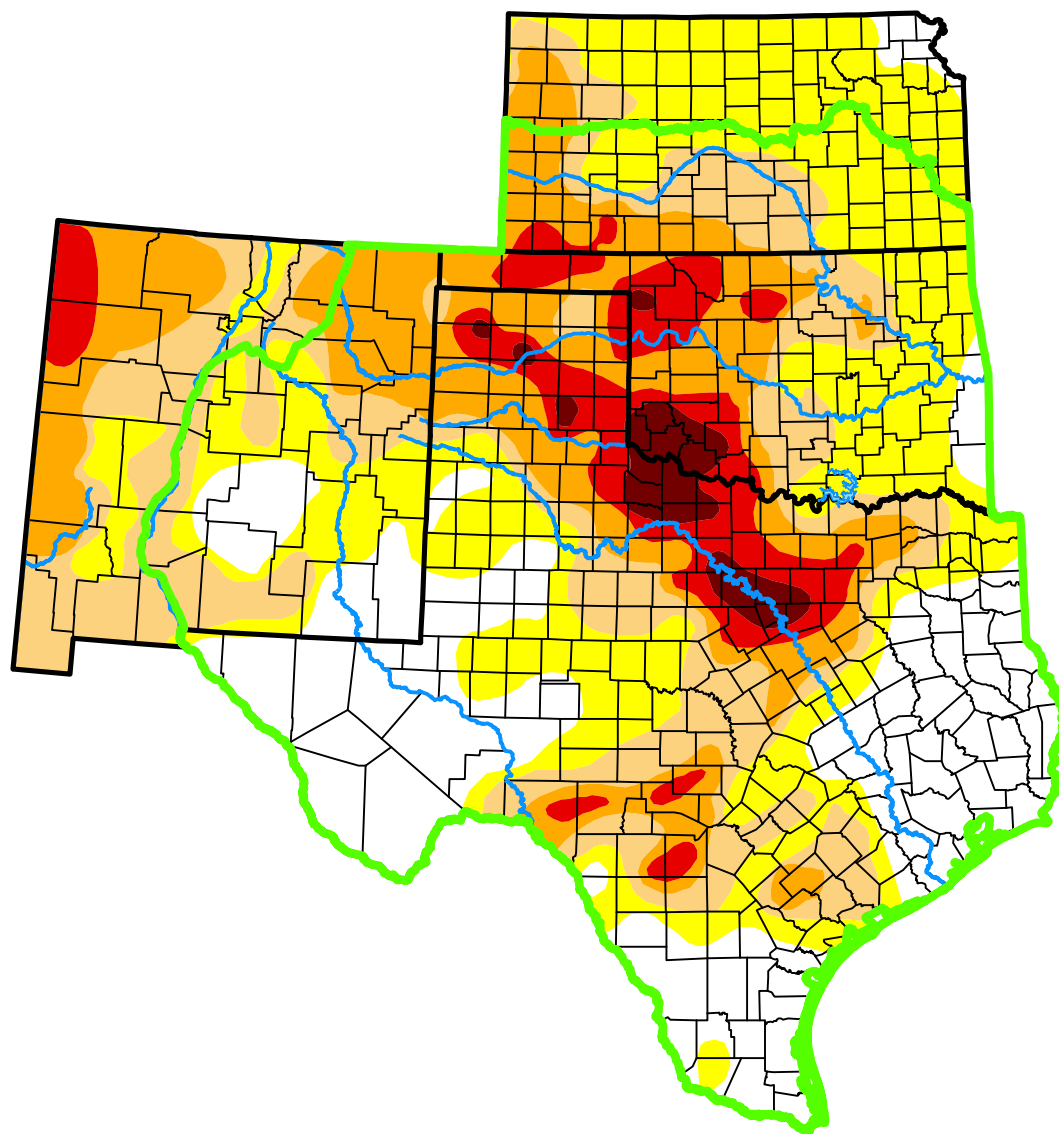


*U.S. Drought Monitor*

# Southern Plains DEWS and Surrounding Areas

**January 20, 2015**  
(Released Thursday, Jan. 22, 2015)  
Valid 7 a.m. EST



*Intensity:*



*The Drought Monitor focuses on broad-scale conditions. Local conditions may vary. For more information on the Drought Monitor, go to <https://droughtmonitor.unl.edu/About.aspx>*

*Author:*

Richard Tinker  
CPC/NOAA/NWS/NCEP



**droughtmonitor.unl.edu**