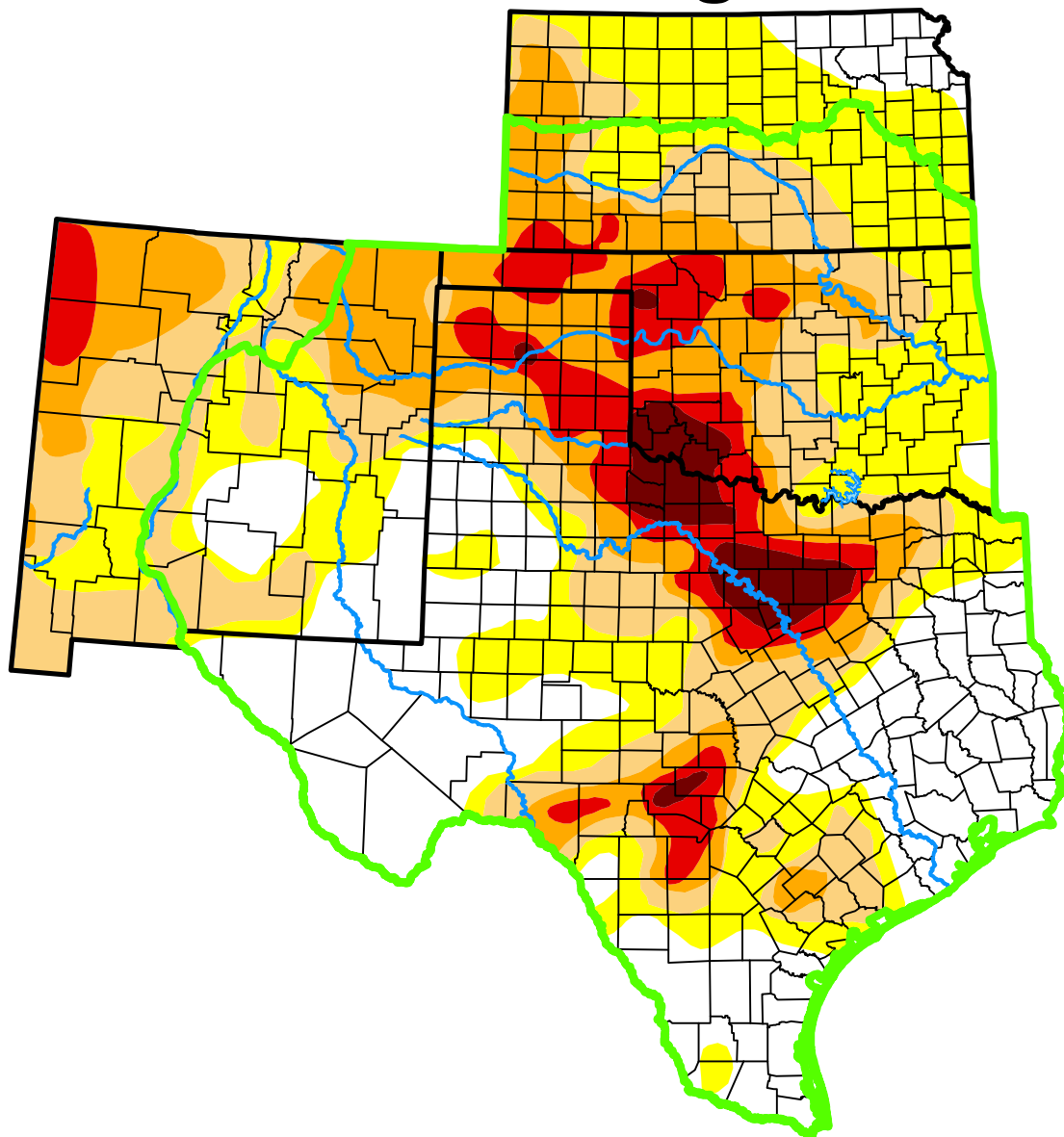


U.S. Drought Monitor

Southern Plains DEWS and Surrounding Areas



February 10, 2015

(Released Thursday, Feb. 12, 2015)

Valid 7 a.m. EST

Drought Conditions (Percent Area)

	None	D0-D4	D1-D4	D2-D4	D3-D4	D4
Current	30.22	69.78	45.93	27.42	11.93	3.60
Last Week <i>02-03-2015</i>	30.92	69.08	45.07	26.21	10.71	2.60
3 Months Ago <i>11-11-2014</i>	28.16	71.84	48.58	26.73	9.76	3.12
Start of Calendar Year <i>12-30-2014</i>	29.70	70.30	48.79	27.20	10.92	2.82
Start of Water Year <i>09-30-2014</i>	23.56	76.44	54.38	31.91	10.55	2.36
One Year Ago <i>02-11-2014</i>	12.25	87.75	59.04	30.66	10.57	0.81

(Statistics for area highlighted in green)

Intensity:

None	D2 Severe Drought
D0 Abnormally Dry	D3 Extreme Drought
D1 Moderate Drought	D4 Exceptional Drought

The Drought Monitor focuses on broad-scale conditions. Local conditions may vary. For more information on the Drought Monitor, go to <https://droughtmonitor.unl.edu/About.aspx>

Author:

David Simeral
Western Regional Climate Center



droughtmonitor.unl.edu