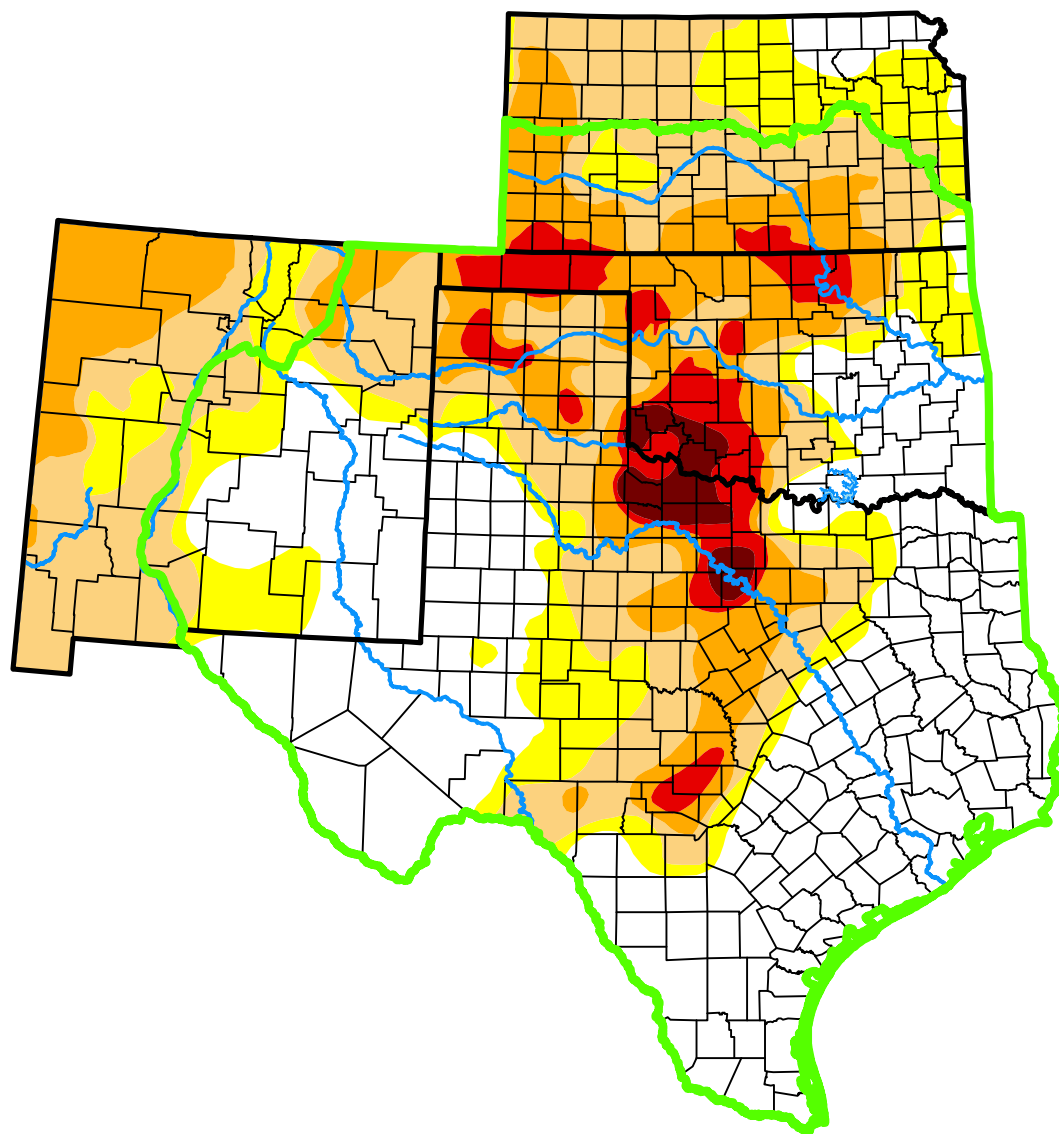


U.S. Drought Monitor

Southern Plains DEWS and Surrounding Areas

April 28, 2015
(Released Thursday, Apr. 30, 2015)
Valid 8 a.m. EDT



Intensity:



The Drought Monitor focuses on broad-scale conditions. Local conditions may vary. For more information on the Drought Monitor, go to <https://droughtmonitor.unl.edu/About.aspx>

Author:

Anthony Artusa
NOAA/NWS/NCEP/CPC



droughtmonitor.unl.edu